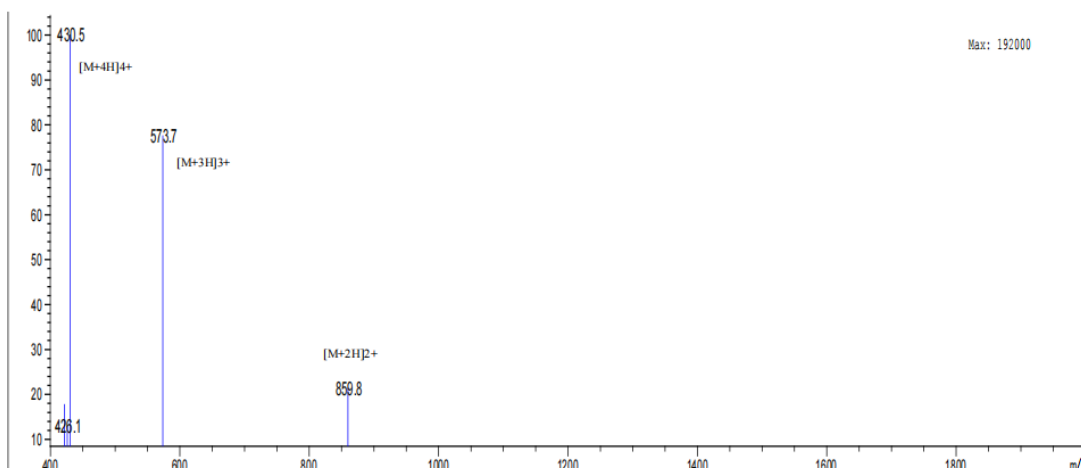
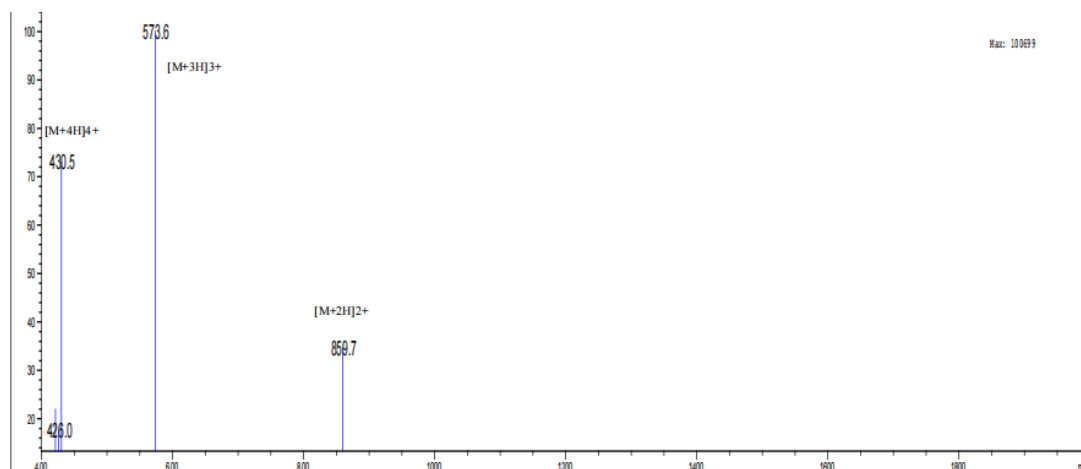


# MASS SPECTROMETRY REPORT



Sample Description		Instrument	Agilent-6125B	
Analyzed date:	2022-02-08	Probe:	ESI	Probe Bias: +4.5kv
Analyst:	YU	Nebulizer Gas Flow:	1.5L/min	Detector: 1.5kv
Sample:	Glucose-NYSKPTDRQYHF NF-12	CDL:	-20.0v	T. Flow: 0.2ml/min
M.W.:	1717.64	CDL Temp.:	250 °C	B. Conc.: 50%H2O/50%ACN
Lot. No.:	P211213-HS957668	Block Temp.:	200 °C	

# MASS SPECTROMETRY REPORT



Sample Description		Instrument	Agilent-6125 B	
Analyzed date:	2022-02-10	Probe:	ESI	Probe Bias: +4.5kv
Analyst:	YU	Nebulizer Gas Flow:	1.5L/min	Detector: 1.5kv
Sample:	Gala-NYSKPTDRQYHF NF-12	CDL:	-20.0v	T. Flow: 0.2ml/min
M.W.:	1717.64	CDL Temp.:	250 °C	B. Conc.: 50%H2O/50%ACN
Lot. No.:	P211213-HS957669	Block Temp.:	200 °C	