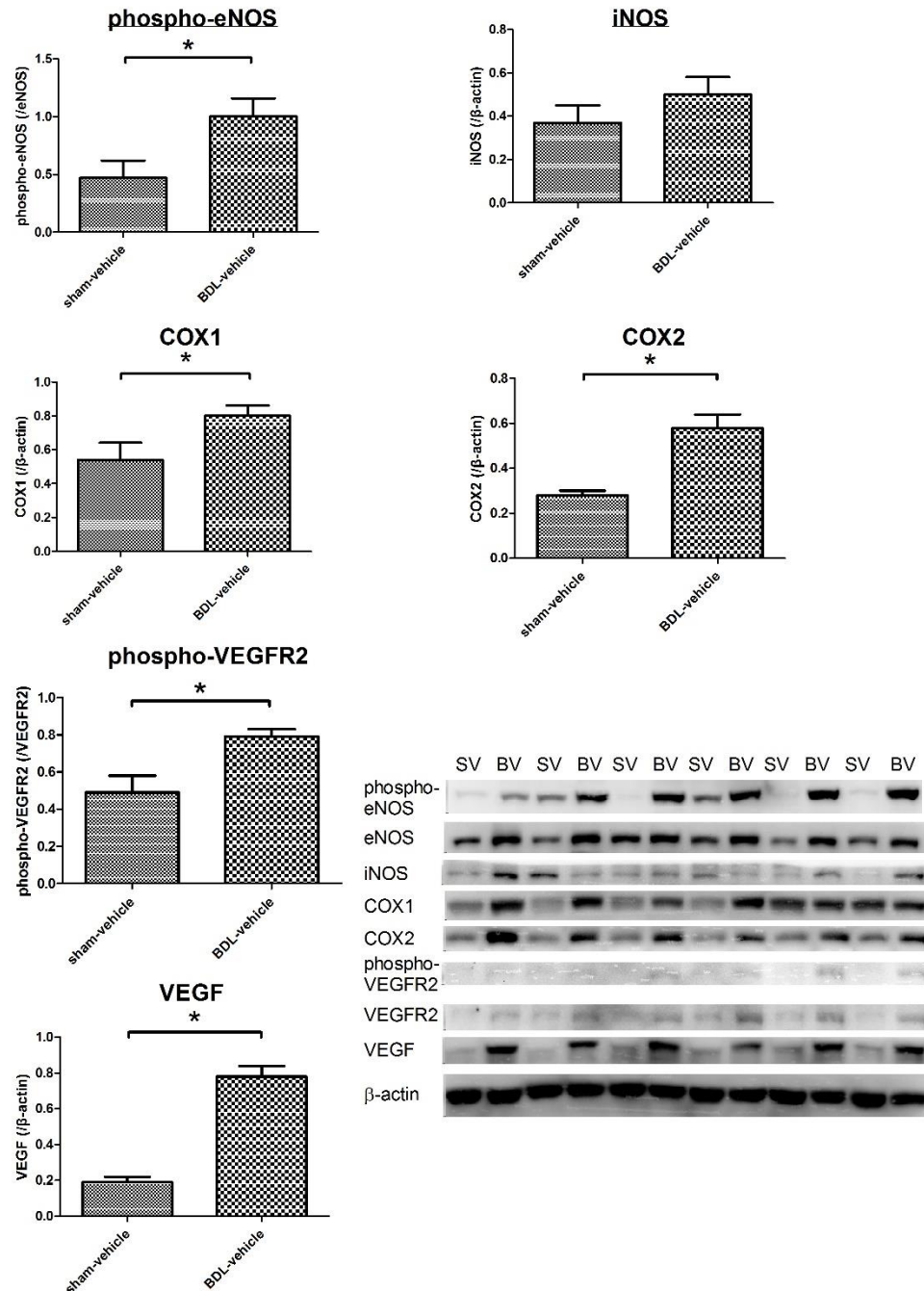


Supplementary Figures

Supplementary figure S1

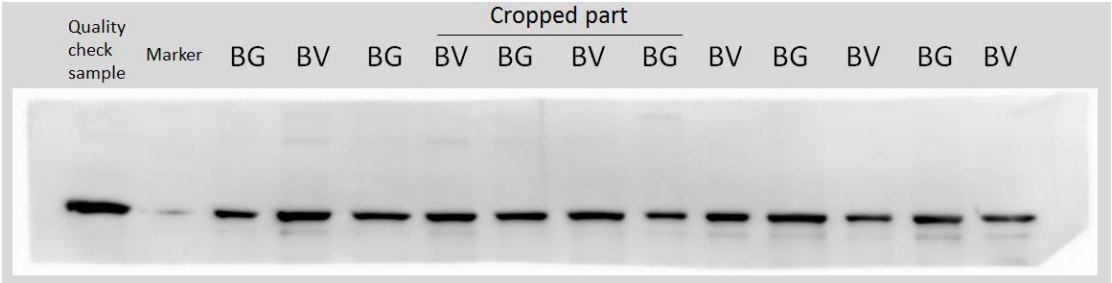
Mesentery



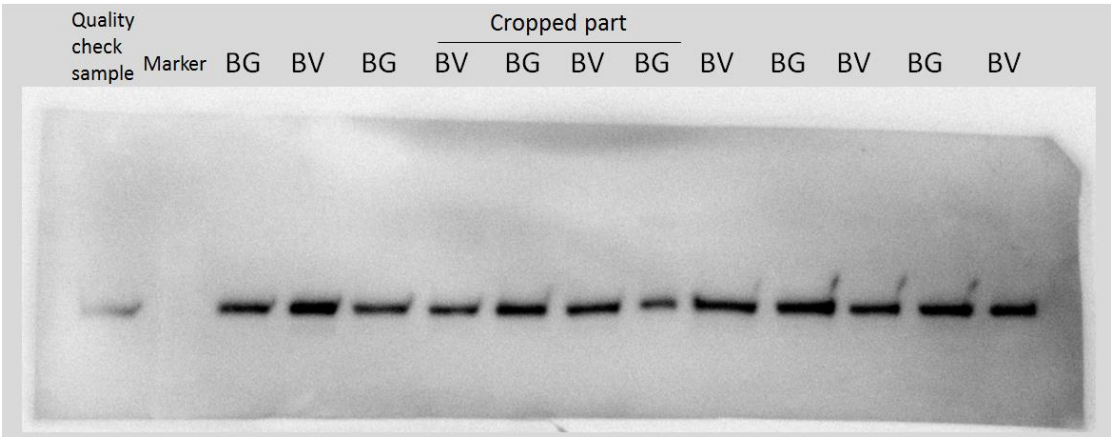
Supplementary figure S1. The angiogenic protein expressions in the mesentery. The protein expressions of phospho-eNOS, COX1, COX2, phospho-VEGFR2 and VEGF were significantly different between sham-vehicle (SV) and BDL-vehicle (BV) groups (n=6, 6). * P<0.05

Supplementary figure S2. Full uncropped Western blots of Mesentery (BDL-vehicle and BDL-glycyrrhizin groups)

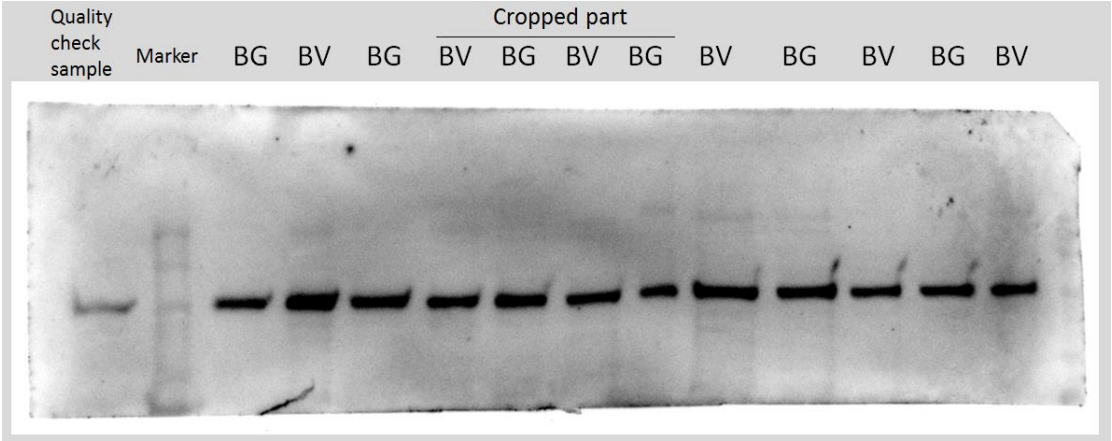
Mesentery phospho-eNOS
Primary antibody: Genetex, GTX129058



Mesentery eNOS
Primary antibody: Cell Signaling, #32027S

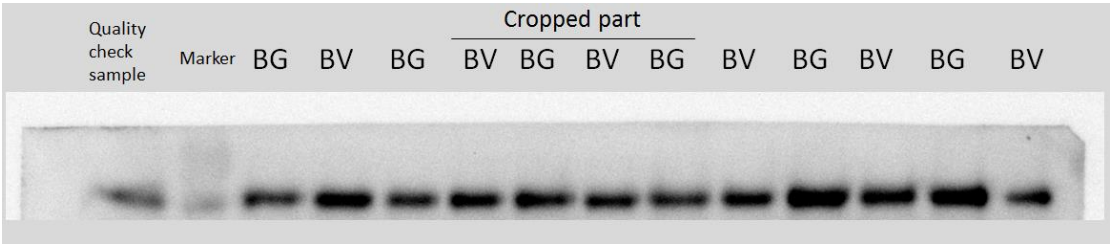


Mesentery iNOS
Primary antibody: Genetex, GTX130246



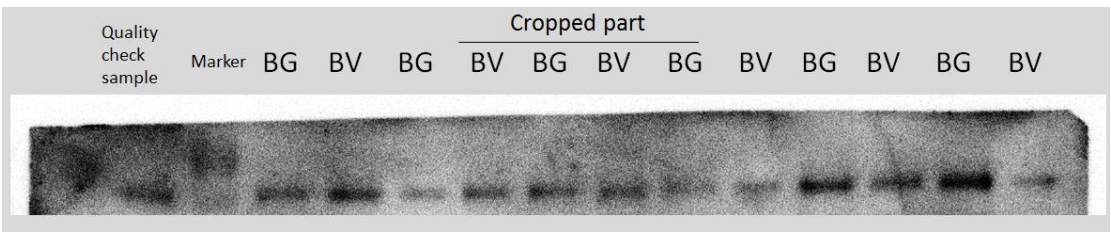
Mesentery COX1

Primary antibody: Cell Signaling, #4841S



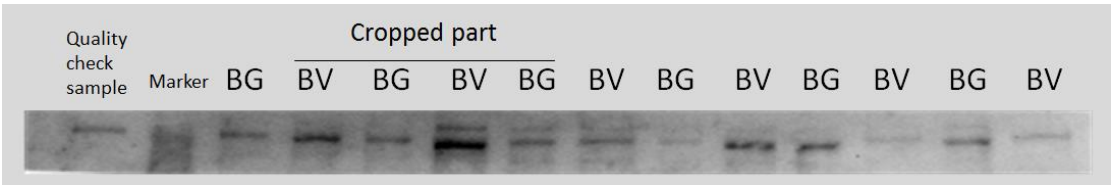
Mesentery COX2

Primary antibody: Cell Signaling, #12282S



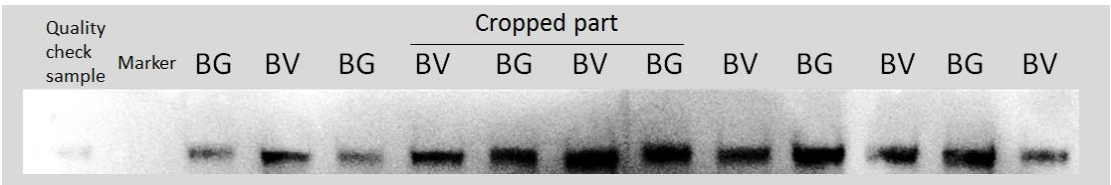
Mesentery Phospho-VEGFR2

Primary antibody: Genetex, GTX50153



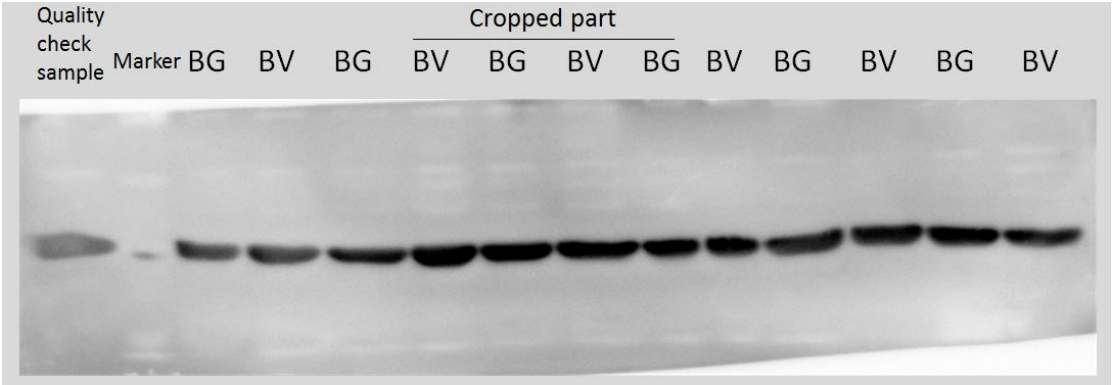
Mesentery VEGFR2

Primary antibody: Cell Signaling, #9698



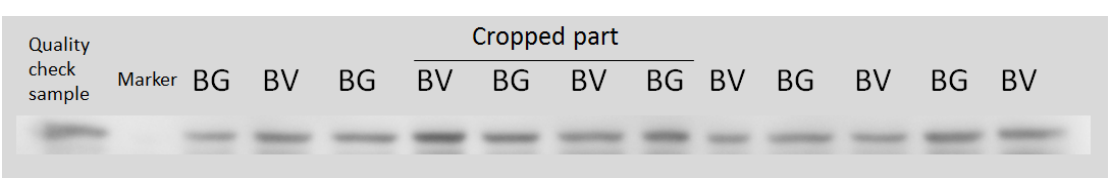
Mesentery β -actin

Primary antibody: Genetex, GTX629630

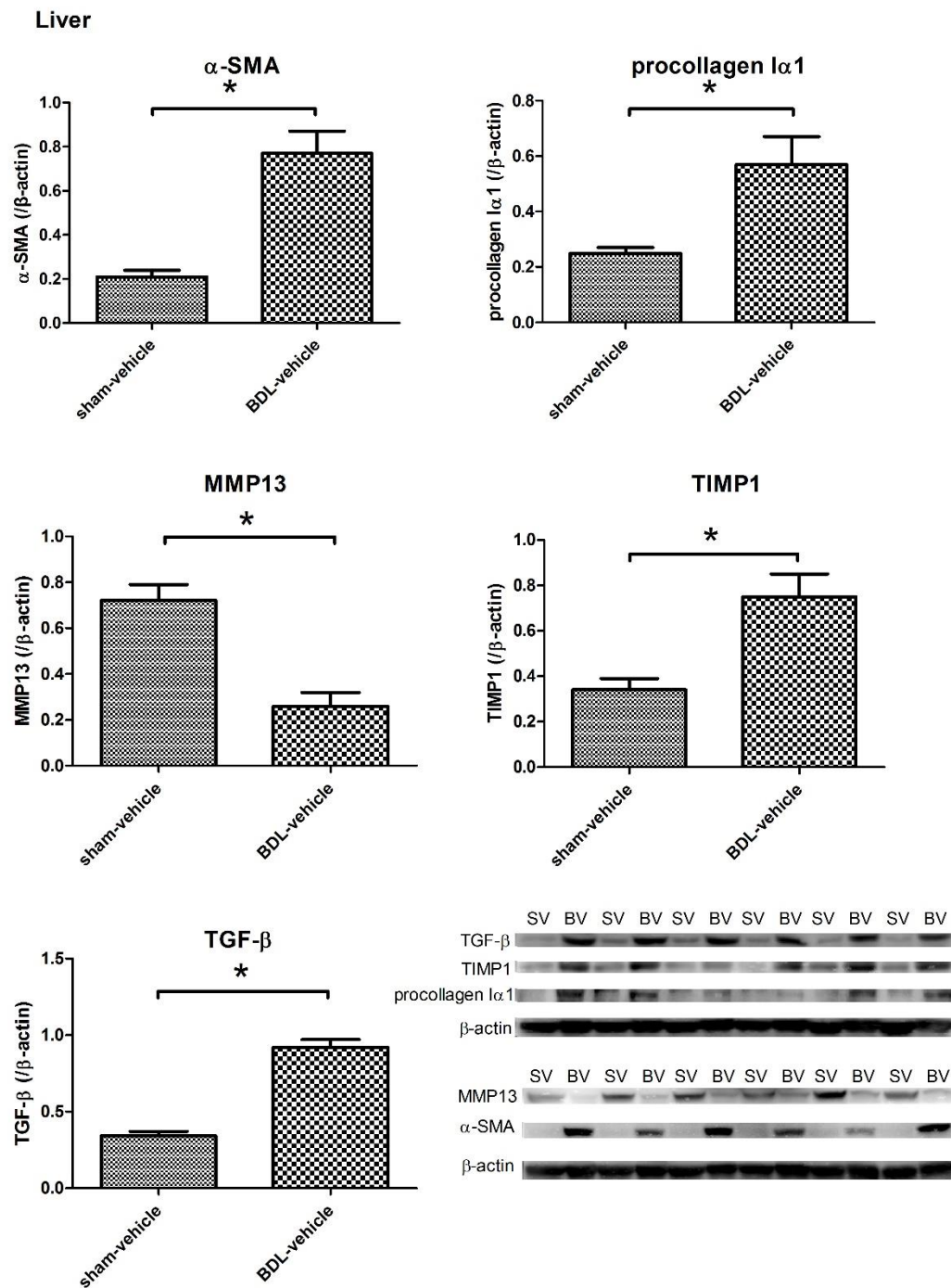


Mesentery VEGF

Primary antibody: Merch Millipore, ABS82



Supplementary figure S3

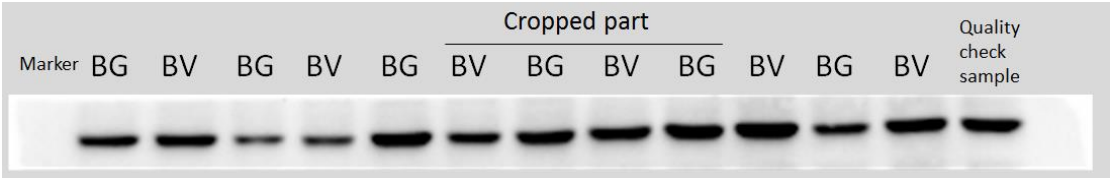


Supplementary figure S3. The fibrogenic protein expressions in the liver. The protein expressions of α -SMA, procollagen I α 1, MMP13, TIMP1 and TGF- β were significantly different between Sham-vehicle (SV) and BDL-vehicle (BV) groups (n=6, 6). * $P < 0.05$

Supplementary figures S4. Full uncropped Western blots of liver (BDL-vehicle and BDL-glycyrrhizin groups)

Liver α -SMA

Primary antibody: Genetex, GTX100034



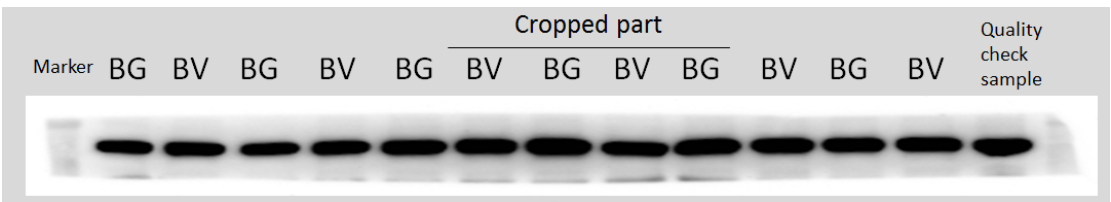
Liver procollagen I α 1

Primary antibody: Abcam, ab34710



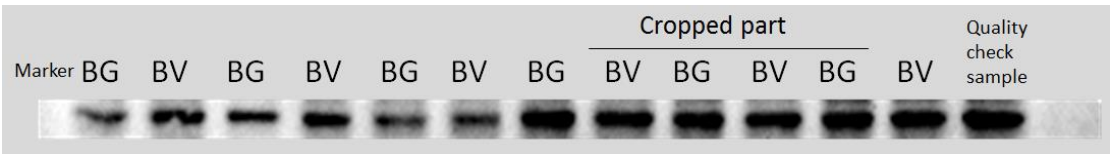
Liver MMP13

Primary antibody: Genetex, GTX100665



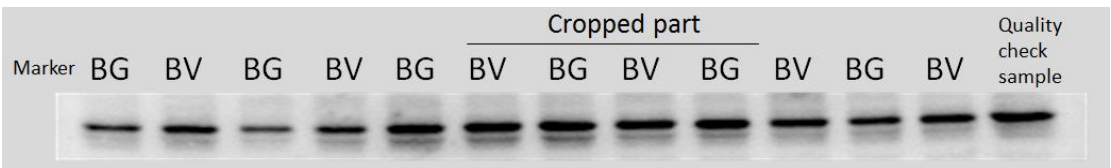
Liver TIMP1

Primary antibody: Genetex, GTX64360



Liver TGF- β

Primary antibody: Genetex, GTX45121



Liver β -actin

Primary antibody: Genetex, GTX629630

