

Supplementary Material

1 Supplementary Data

Supplementary Table S1 Q-RT-PCR primers sequences for expressed imprinted genes.

Name	Forward (5'→3')	Reverse (5'→3')
CXCL10	CAACTGCATCCATATCGATGAC	GATTCCGGATTTCAGACATCTCT
CXCL11	GTAACGGCTGCGACAAAGTTGAAG	GAGGCGAGCTTGCTTGGATCTG
CXCL12	TGCATCAGTGACGGTAAACCA	TTCTTCAGCCGTGCAACAATC
CXCL14	GAAGATGGTTATCGTCACCACC	CGTTCCAGGCATTGTACCACT
CCL2	TTAAAAACCTGGATCGGAACCAA	GCATTAGCTTCAGATTTACGGGT
CX3CL1	ACGAAATGCGAAATCATGTGC	CTGTGTCGTCTCCAGGACAA
IL-15	ACATCCATCTCGTGCTACTTGT	GCCTCTGTTTTAGGGAGACCT
IL-24	GAGCCTGCCCAACTTTTTGTG	TGTGTTGAAGAAAGGGCCAGT
PLGF	TCTGCTGGGAACAACCTCAACA	GTGAGACACCTCATCAGGGTAT
TGF- β	CTCCCGTGGCTTCTAGTGC	GCCTTAGTTTGGACAGGATCTG
dPRP	TTATGGGTGCATGGATCACTCC	CCCACGTAAGGTCATCATGGAT
GAPDH	GGTGAAGGTCGGTGTGAACG	CTCGCTCCTGGAAGATGGTG

Figure S1 Isolated endometrial stromal cells was determined by immunofluorescence staining

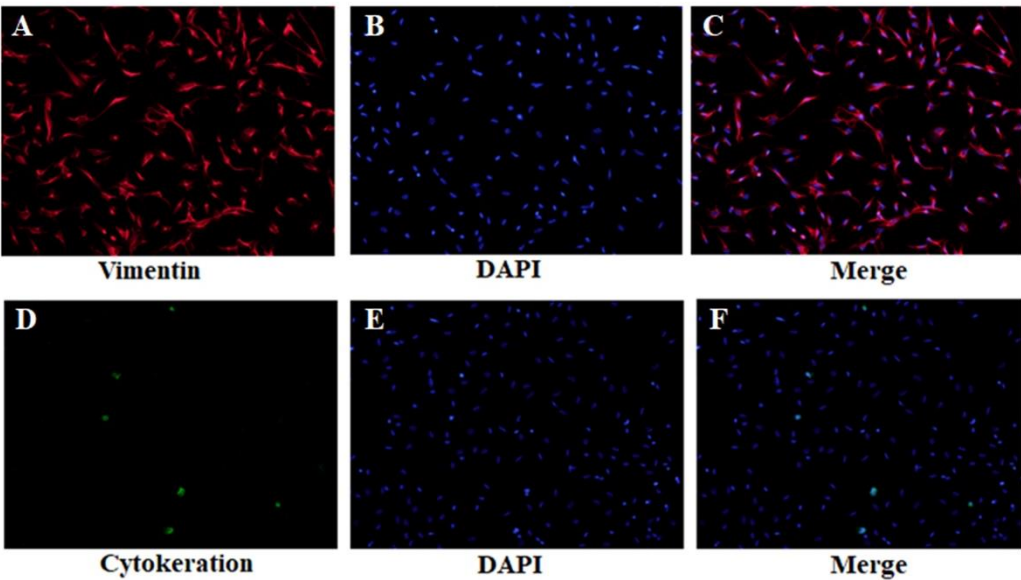


Figure S1. Identification of mouse endometrial stromal cells (100×)
A: Vimentin; B: DAPI; C: Vimentin + DAPI; D: Cytokeration; E: DAPI; F: Cytokeration + DAPI

Figure S2 In vitro decidualization by detecting the expression of dPRP

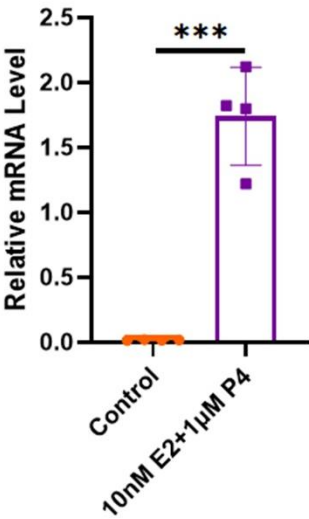


Figure S2. The expression of dPRP before or after decidualization