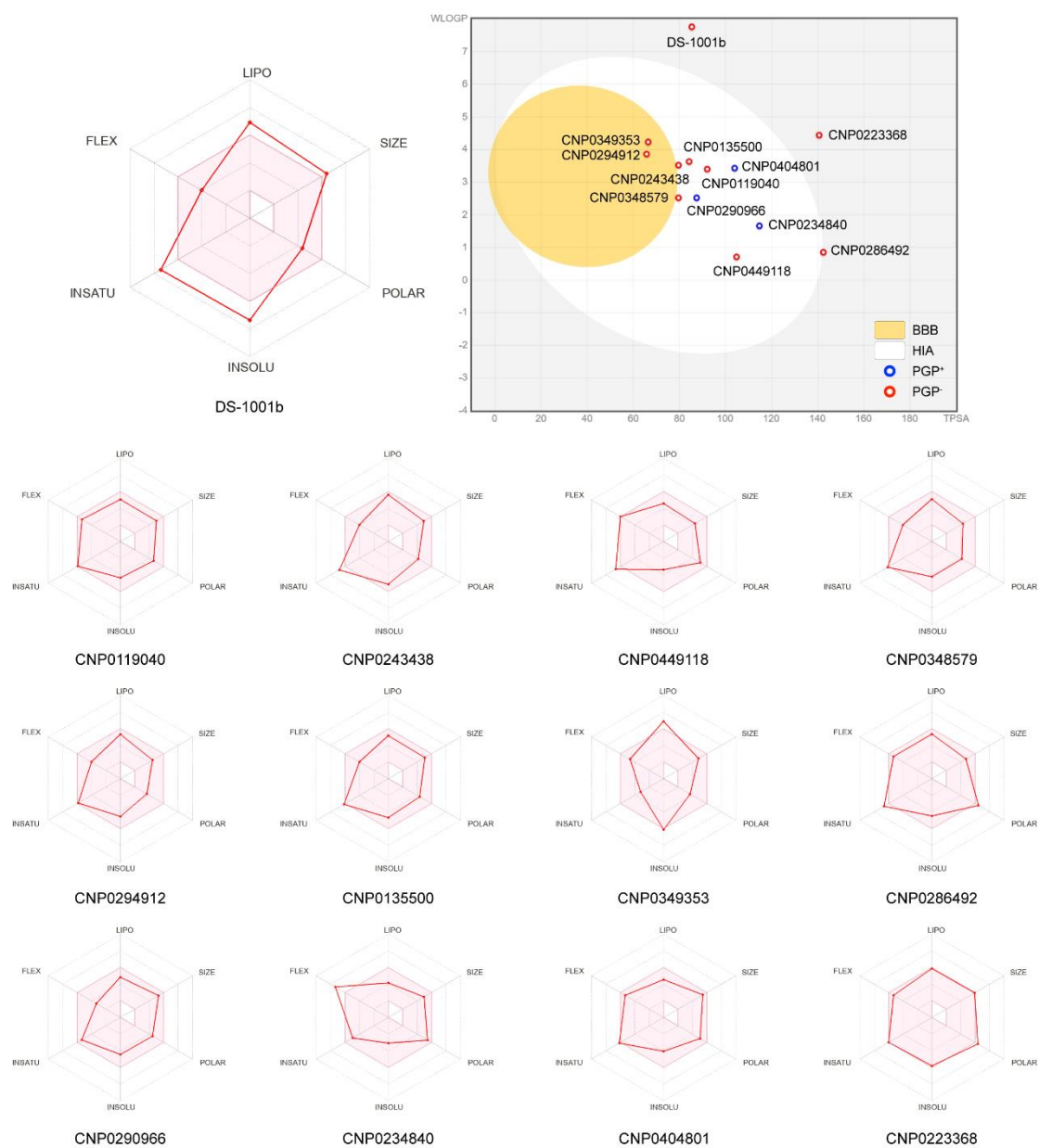


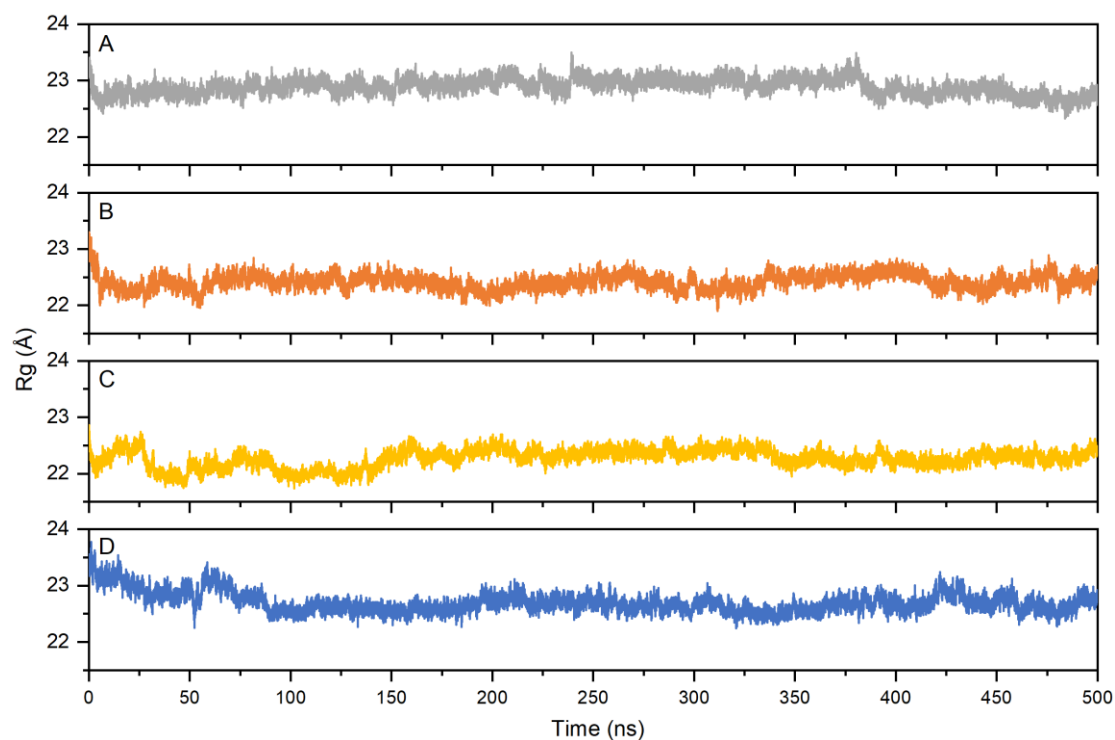
**Figure S1.** The similarity matrix from fingerprint of 12 hits, coumarin and flavonoids

**Table S1.** The Druglikeness and PAINS of the top 12 compounds.

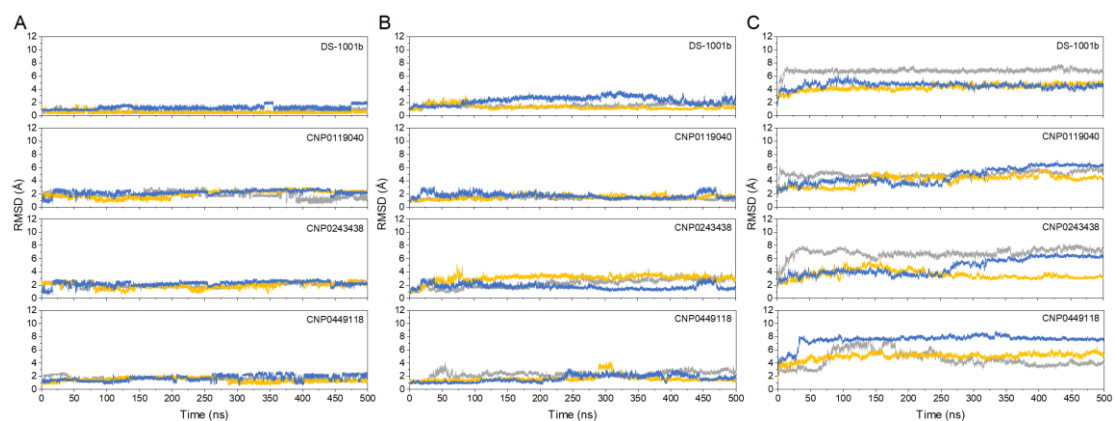
ID	Druglikeness						PAINS
	Lipinski	Ghose	Veber	Egan	Muegge	Bioavailability Score	
DS-1001b	No	No	Yes	No	No	0.56	0 alert
CNP0119040	Yes	Yes	Yes	Yes	Yes	0.55	0 alert
CNP0243438	Yes	Yes	Yes	Yes	Yes	0.56	0 alert
CNP0449118	Yes	Yes	Yes	Yes	Yes	0.56	0 alert
CNP0348579	Yes	Yes	Yes	Yes	Yes	0.56	0 alert
CNP0294912	Yes	Yes	Yes	Yes	Yes	0.55	0 alert
CNP0135500	Yes	Yes	Yes	Yes	Yes	0.55	0 alert
CNP0349353	Yes	Yes	Yes	Yes	No	0.85	0 alert
CNP0286492	Yes	Yes	No	No	Yes	0.56	0 alert
CNP0290966	Yes	Yes	Yes	Yes	Yes	0.55	0 alert
CNP0234840	Yes	Yes	No	Yes	Yes	0.55	0 alert
CNP0404801	Yes	Yes	Yes	Yes	Yes	0.55	0 alert
CNP0223368	Yes	No	No	No	Yes	0.55	0 alert



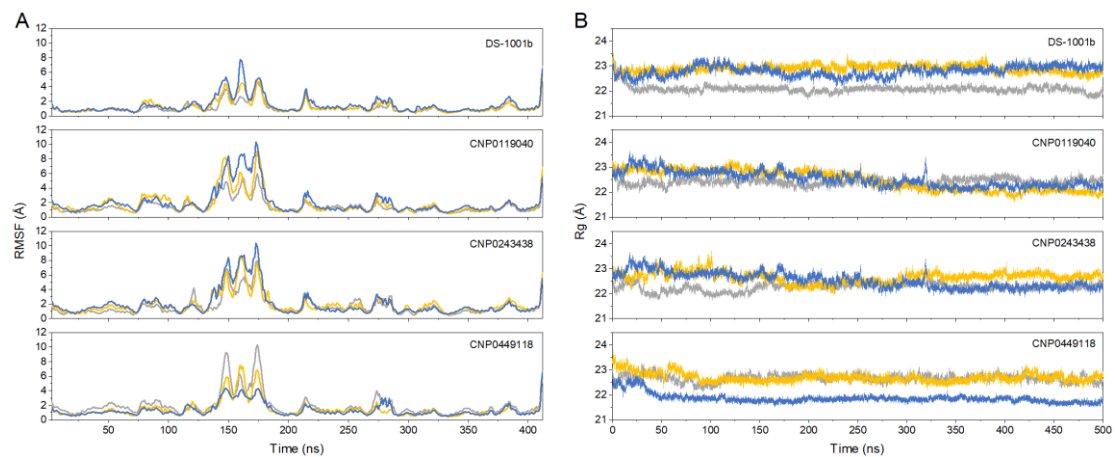
**Figure S2.** The bioactivity radar and BOILED-Egg plot of the 12 compounds



**Figure S3.** The Rg values of the DS-1001b, CNP0119040, CNP0243438, and CNP0449118 (frame interval=1).



**Figure S4.** The superposition of RMSD for triplicate sample, ligand(A), pocket(B) and backbone(C).



**Figure S5.** The superposition of RMSF(A) and Rg(B) for triplicate sample.