

Supplementary materials

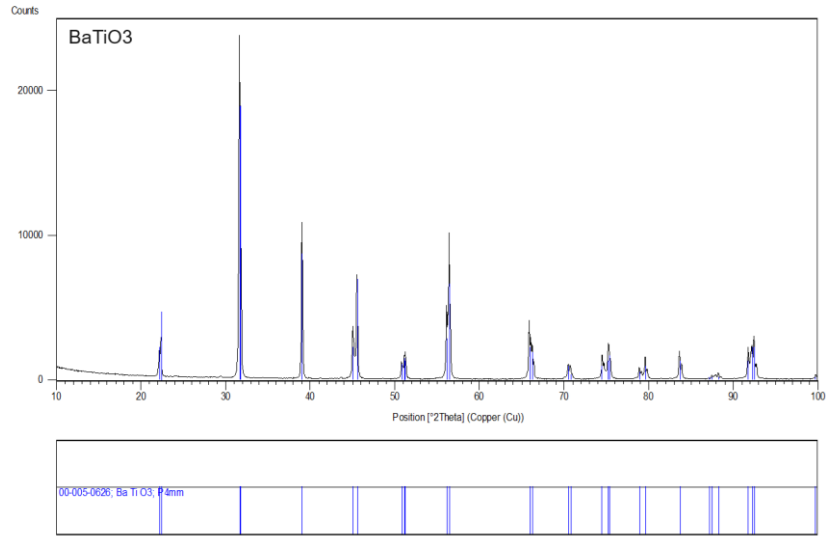


Figure S1. X-ray diffraction patterns for BaTiO₃ material.

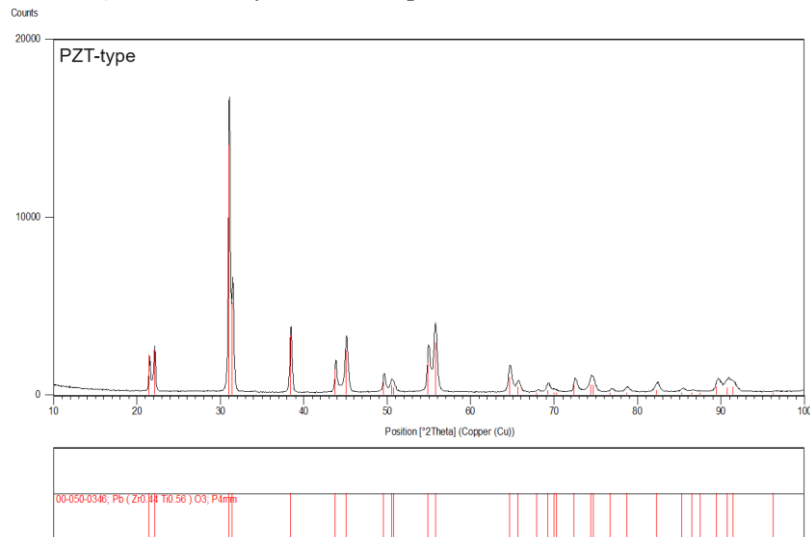


Figure S2. X-ray diffraction patterns for Pb_{0.94}Sr_{0.06}(Zr_{0.46}Ti_{0.54})_{0.99}Cr_{0.01}O₃ material.

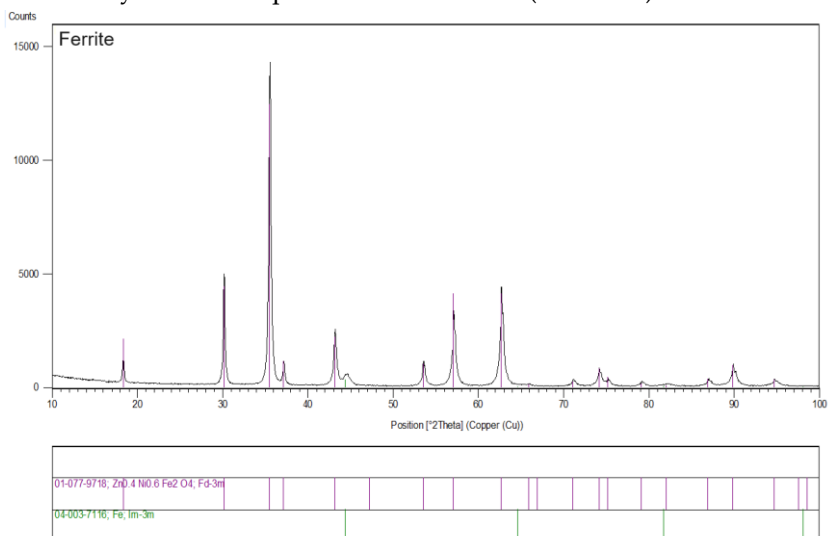


Figure S3. X-ray diffraction patterns for Ni_{0.64}Zn_{0.36}Fe₂O₄ ferrite material.