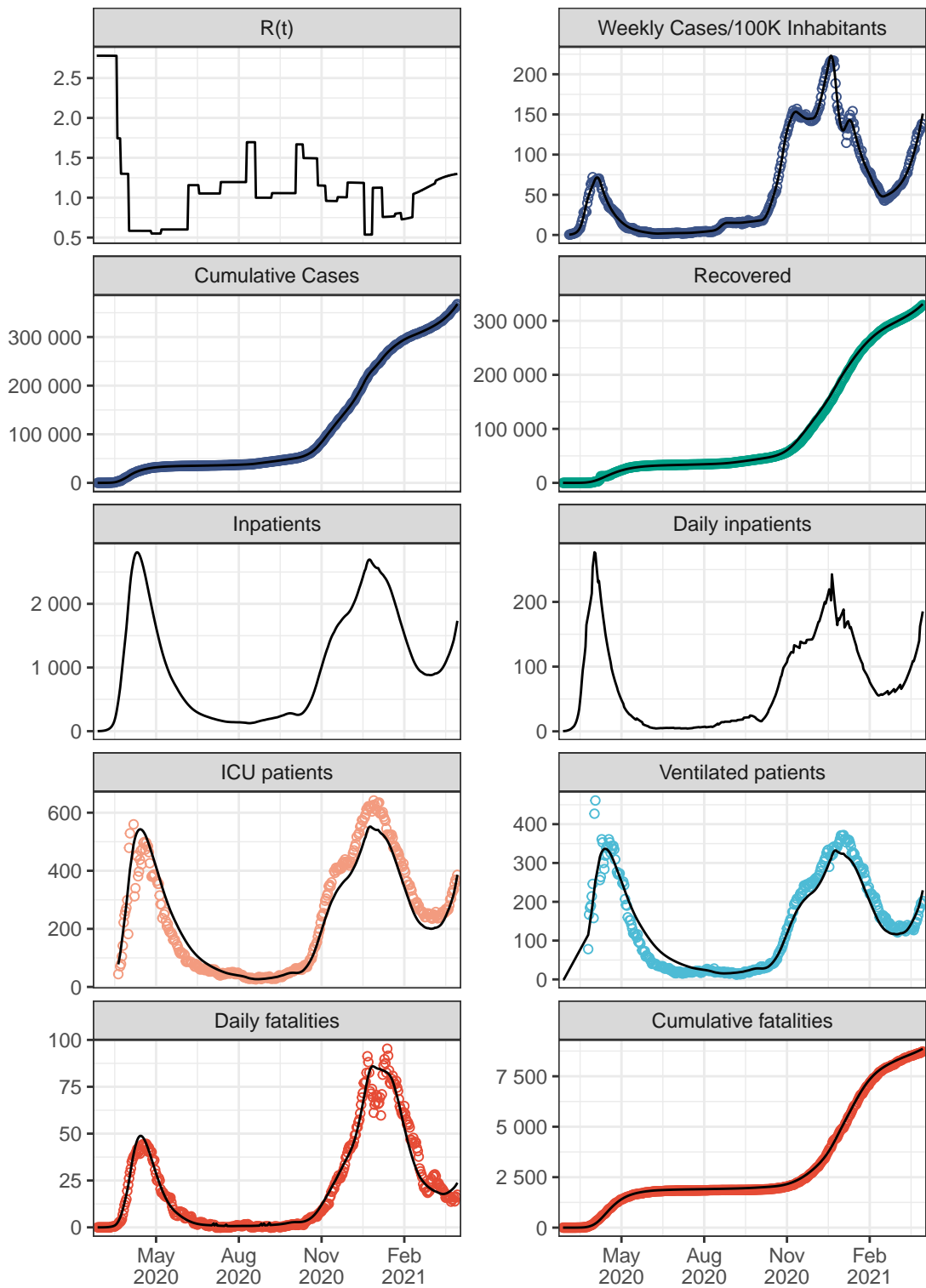
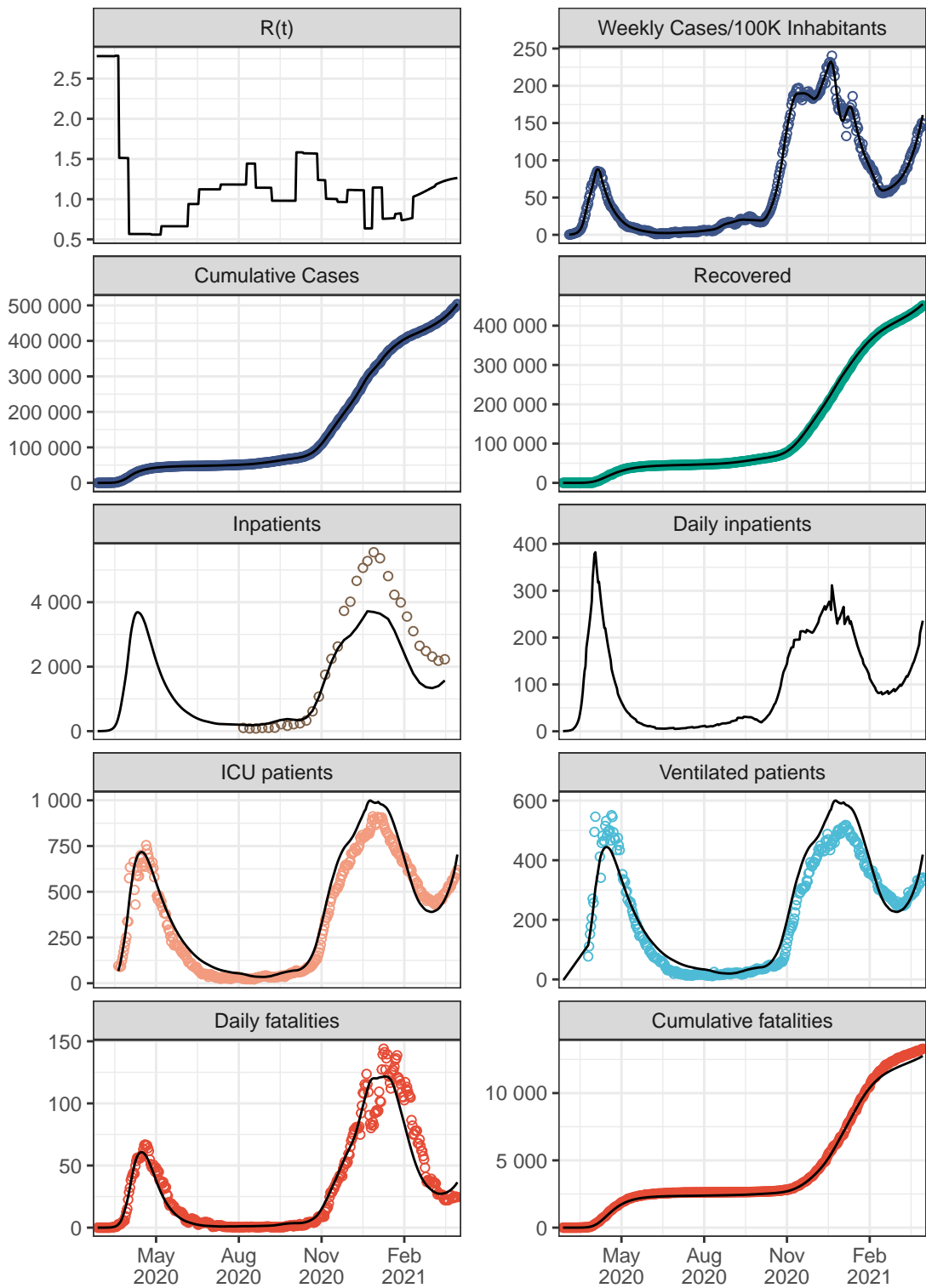


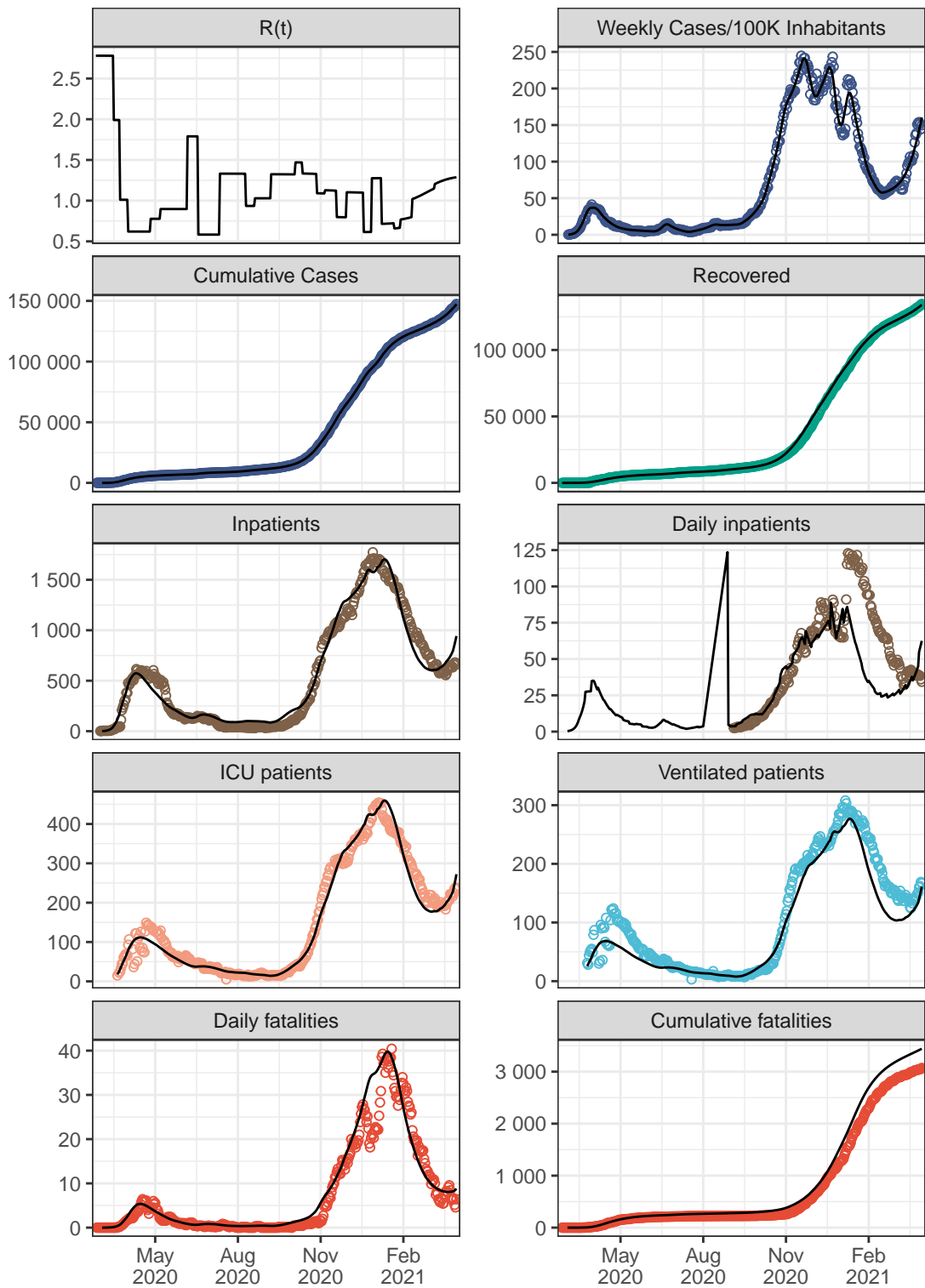
Baden-Wuerttemberg



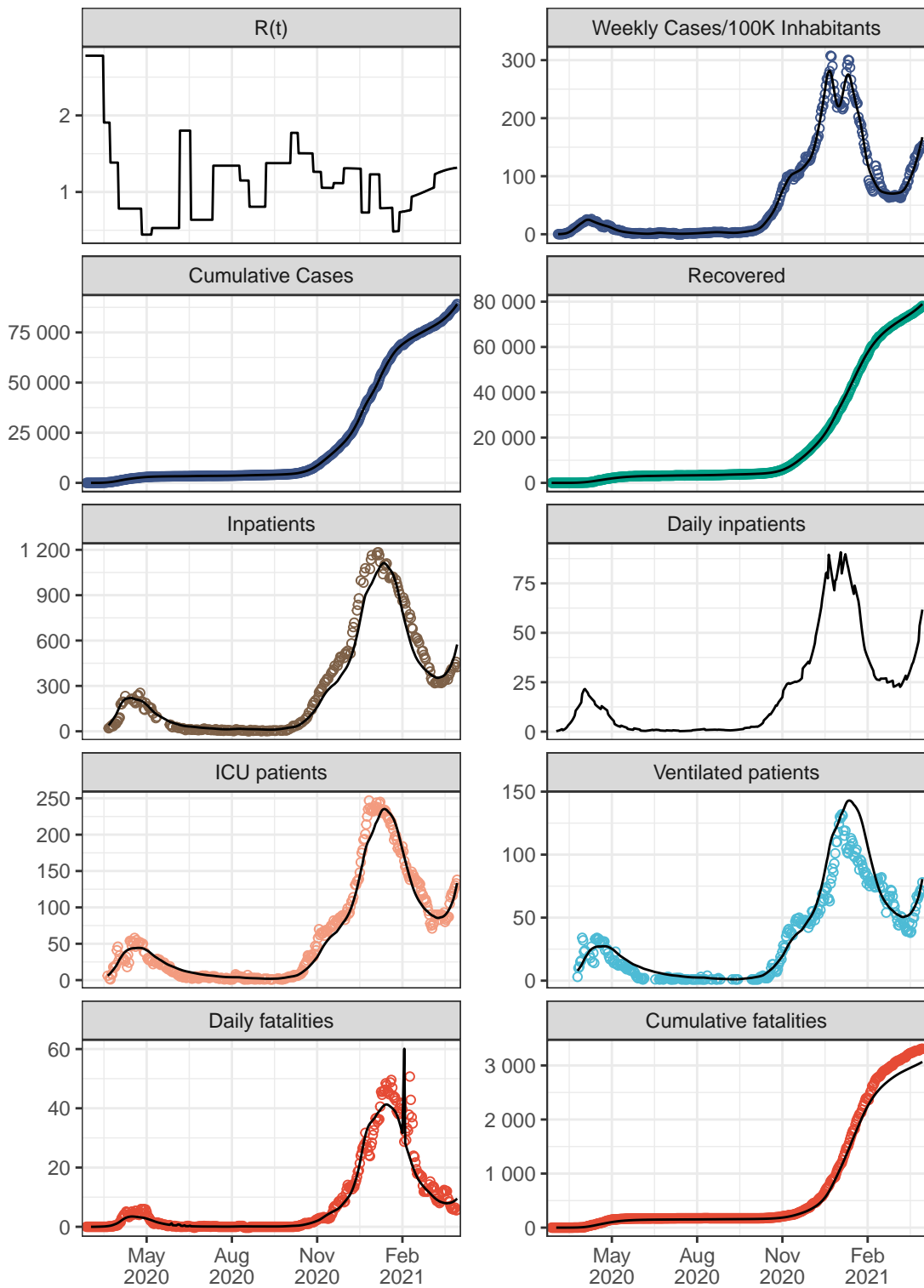
Bavaria



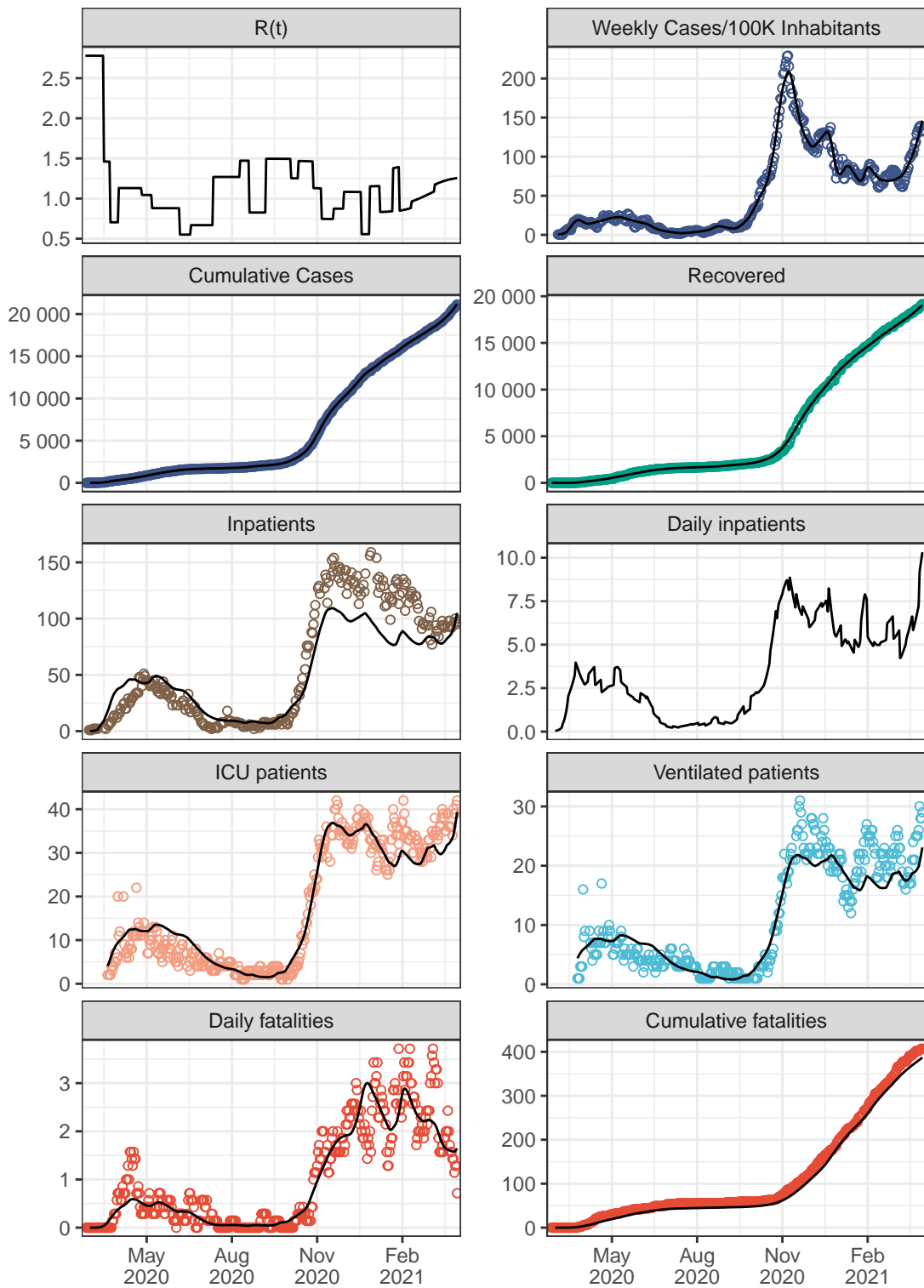
Berlin



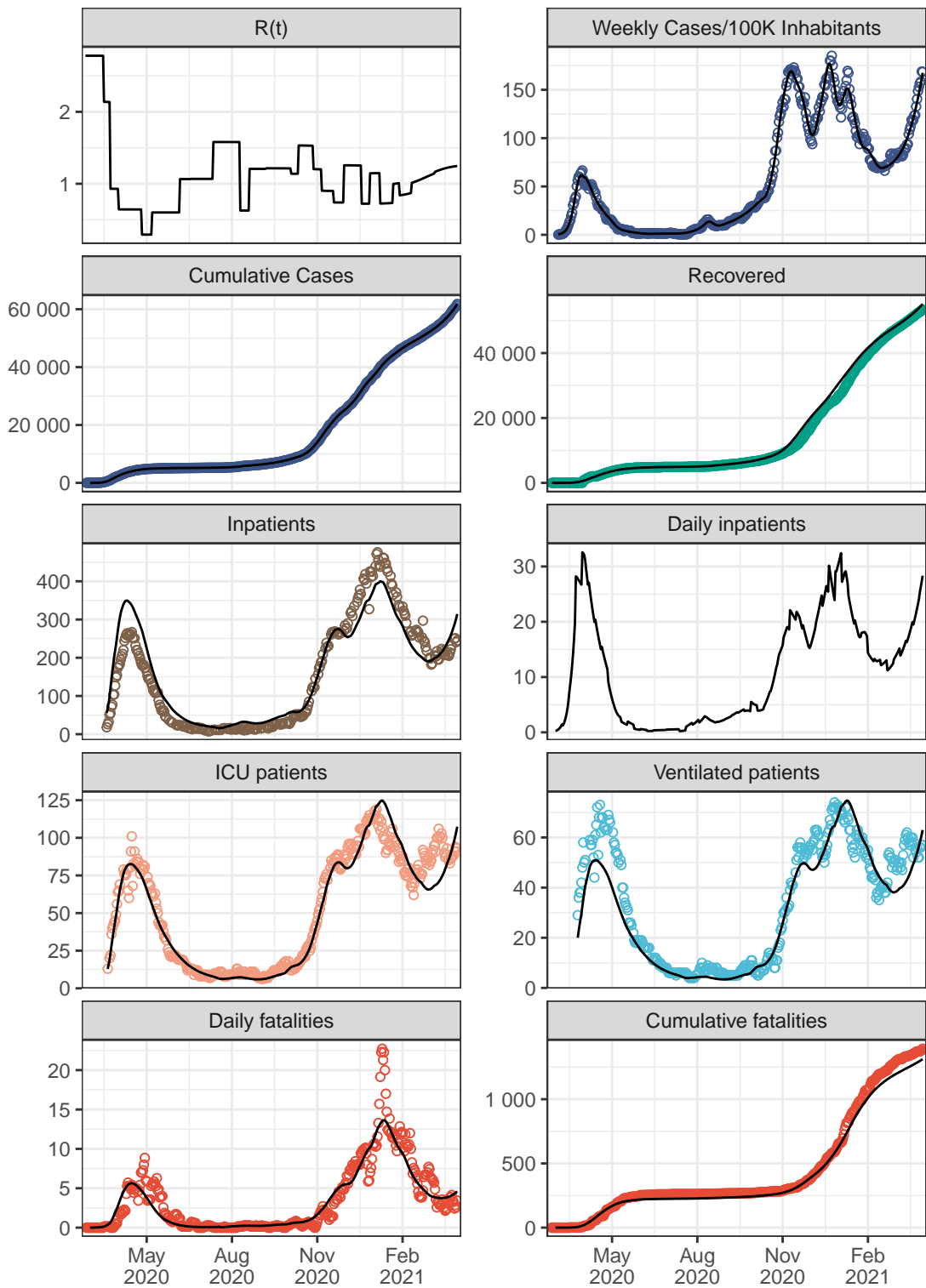
Brandenburg



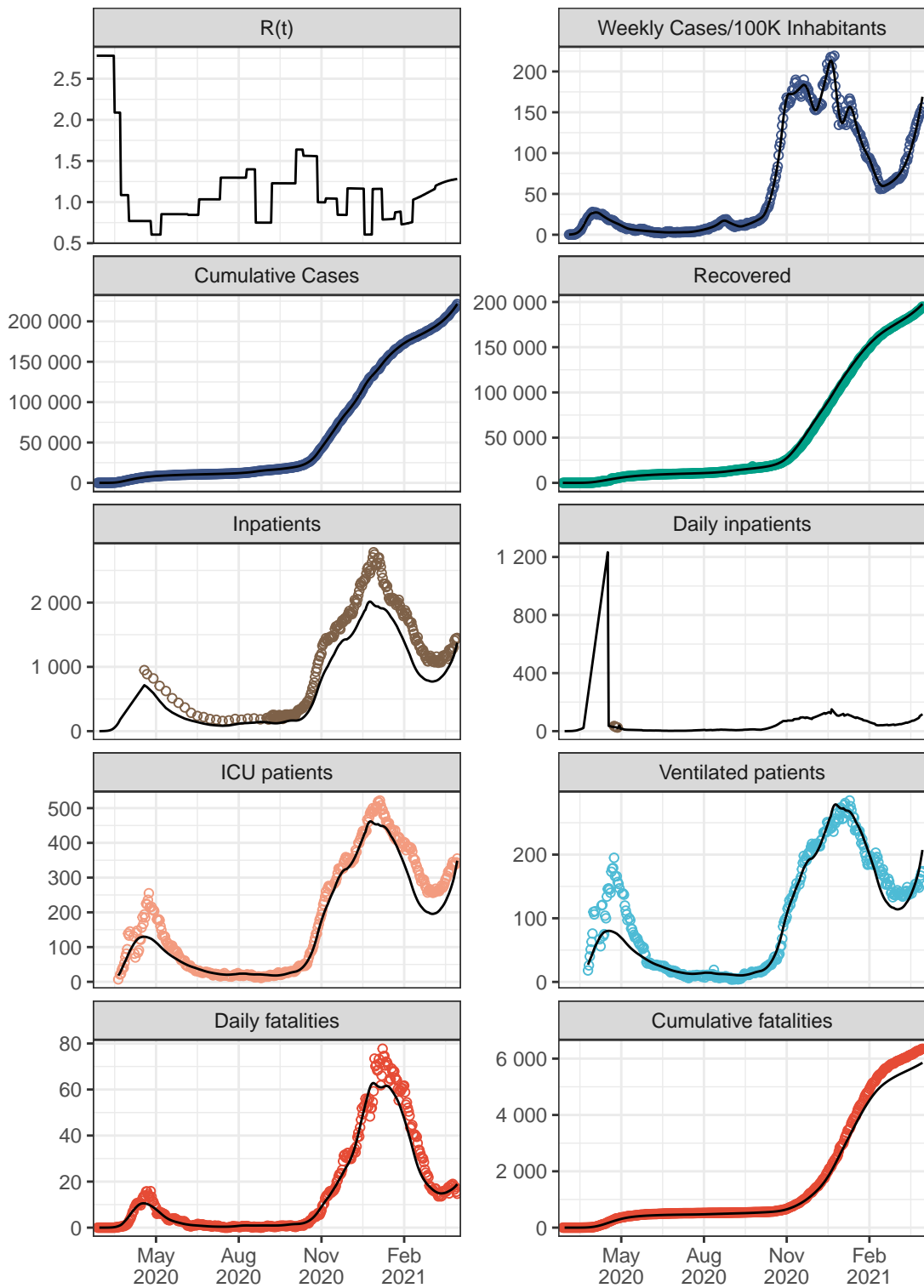
Bremen



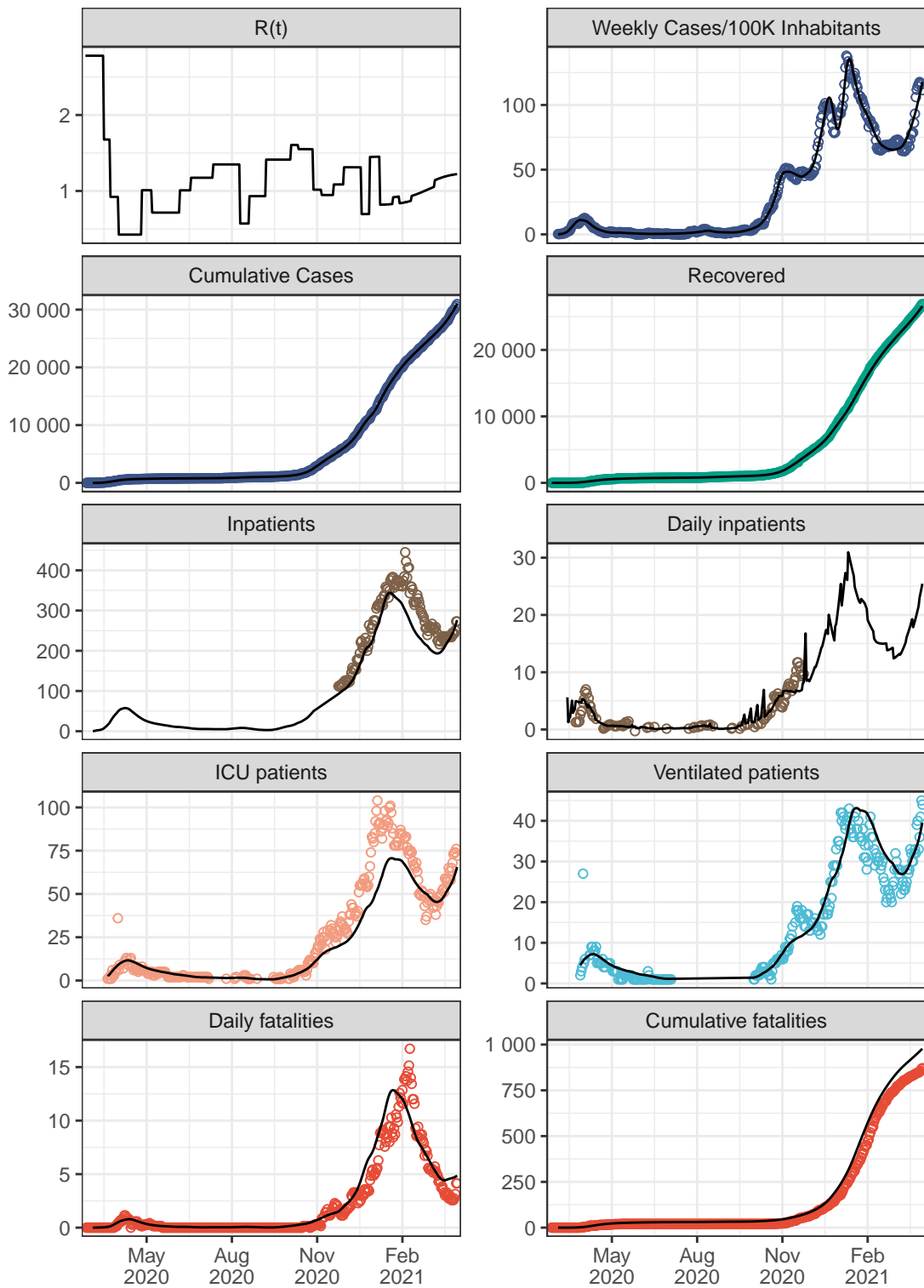
Hamburg



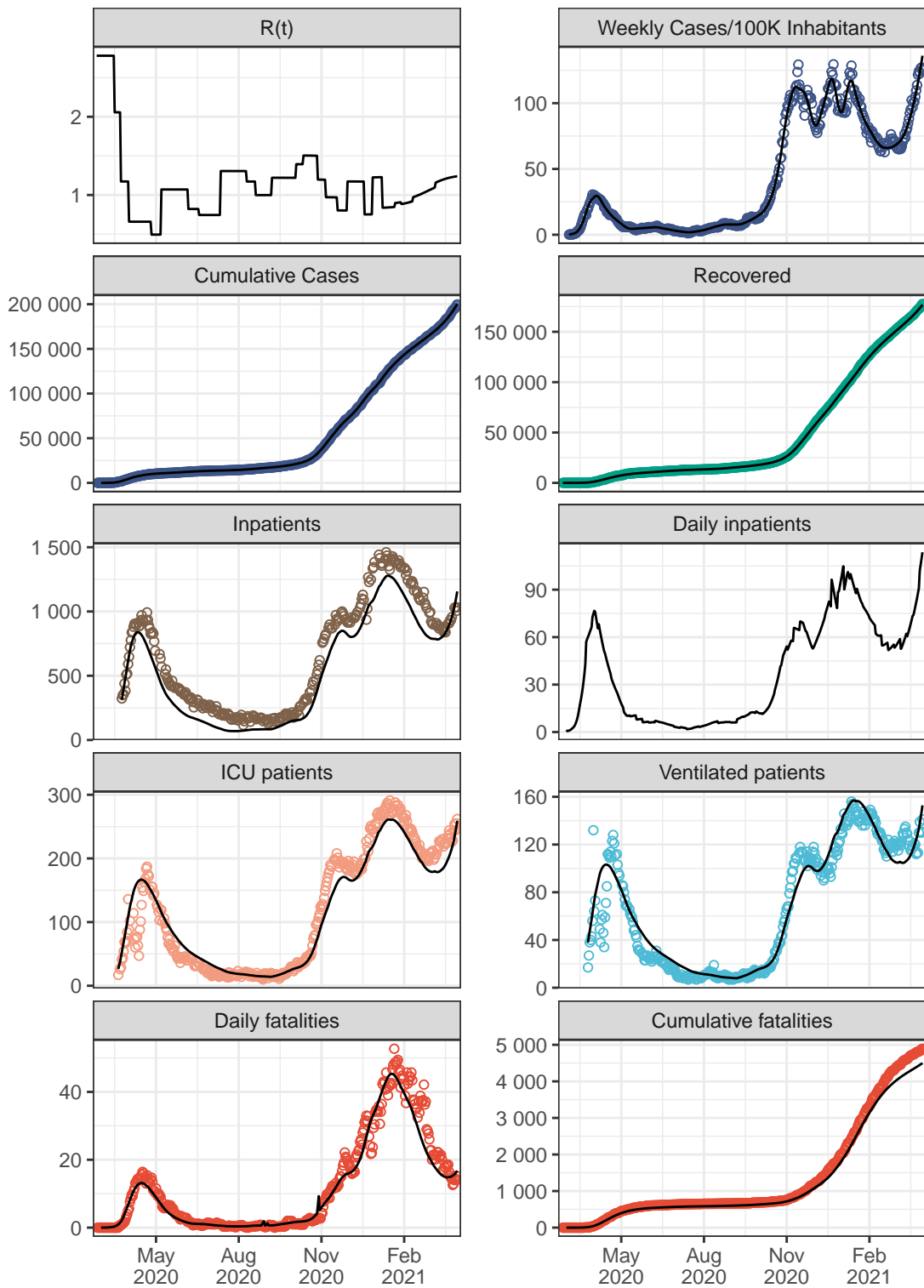
Hesse



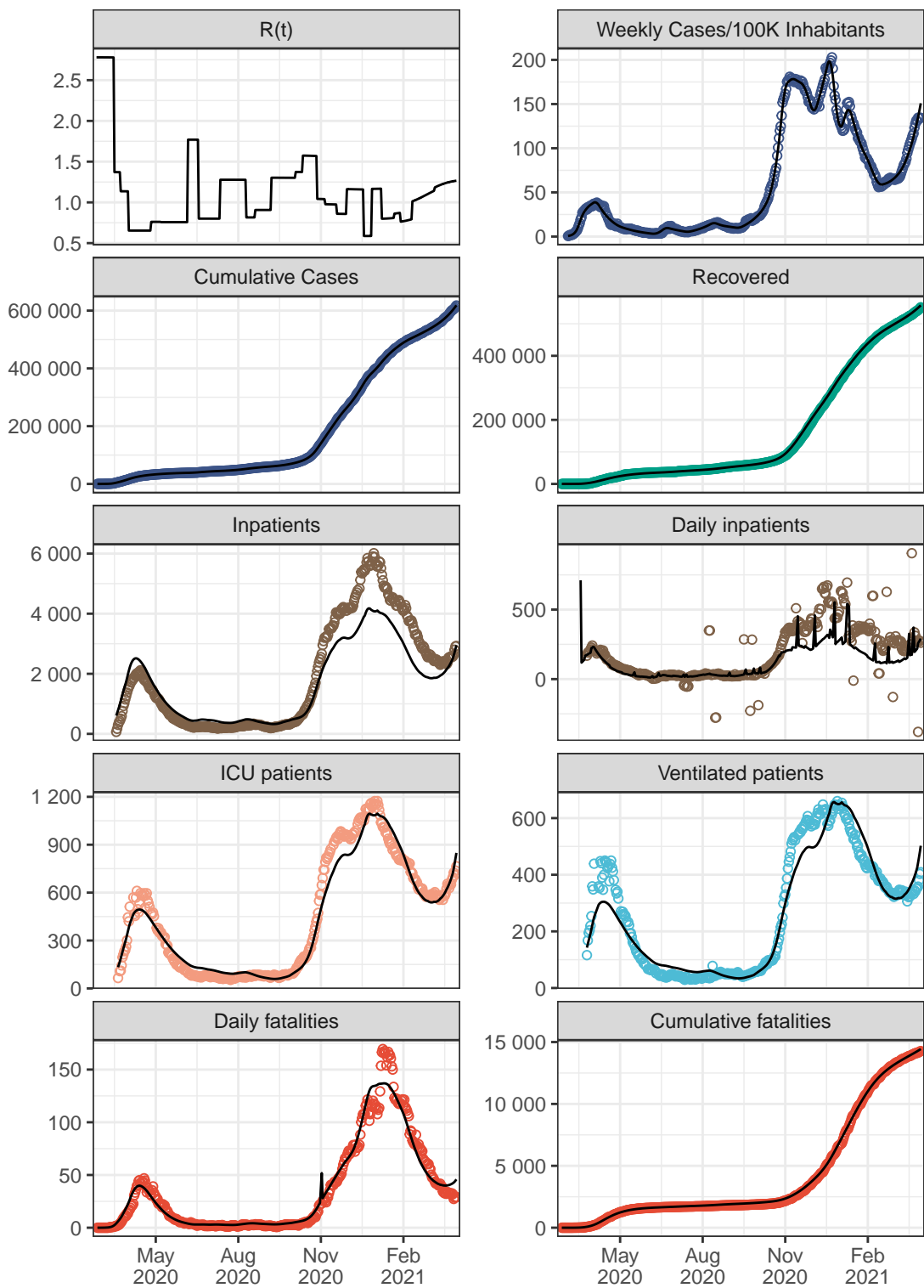
Mecklenburg–Vorpommern



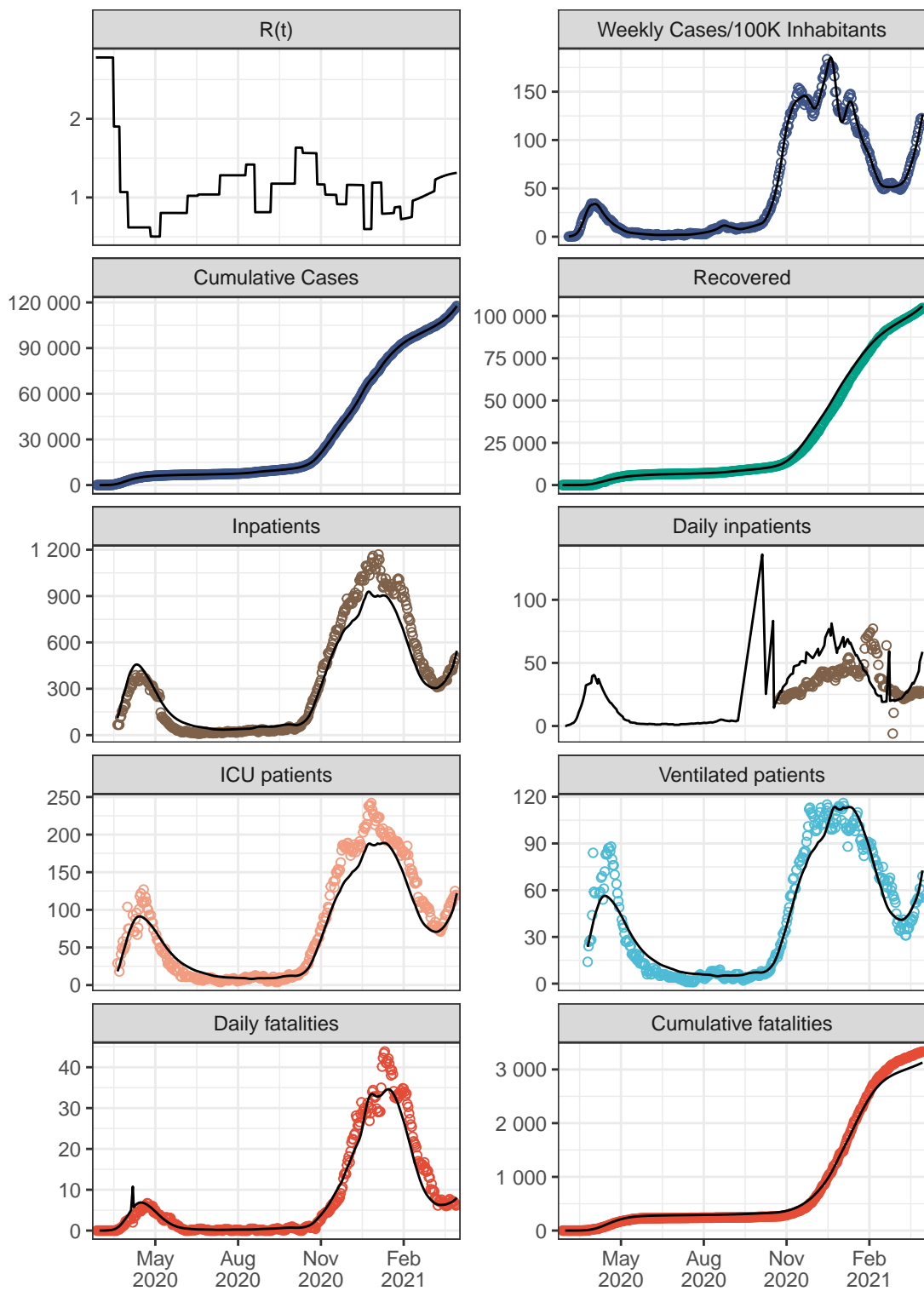
Lower Saxony



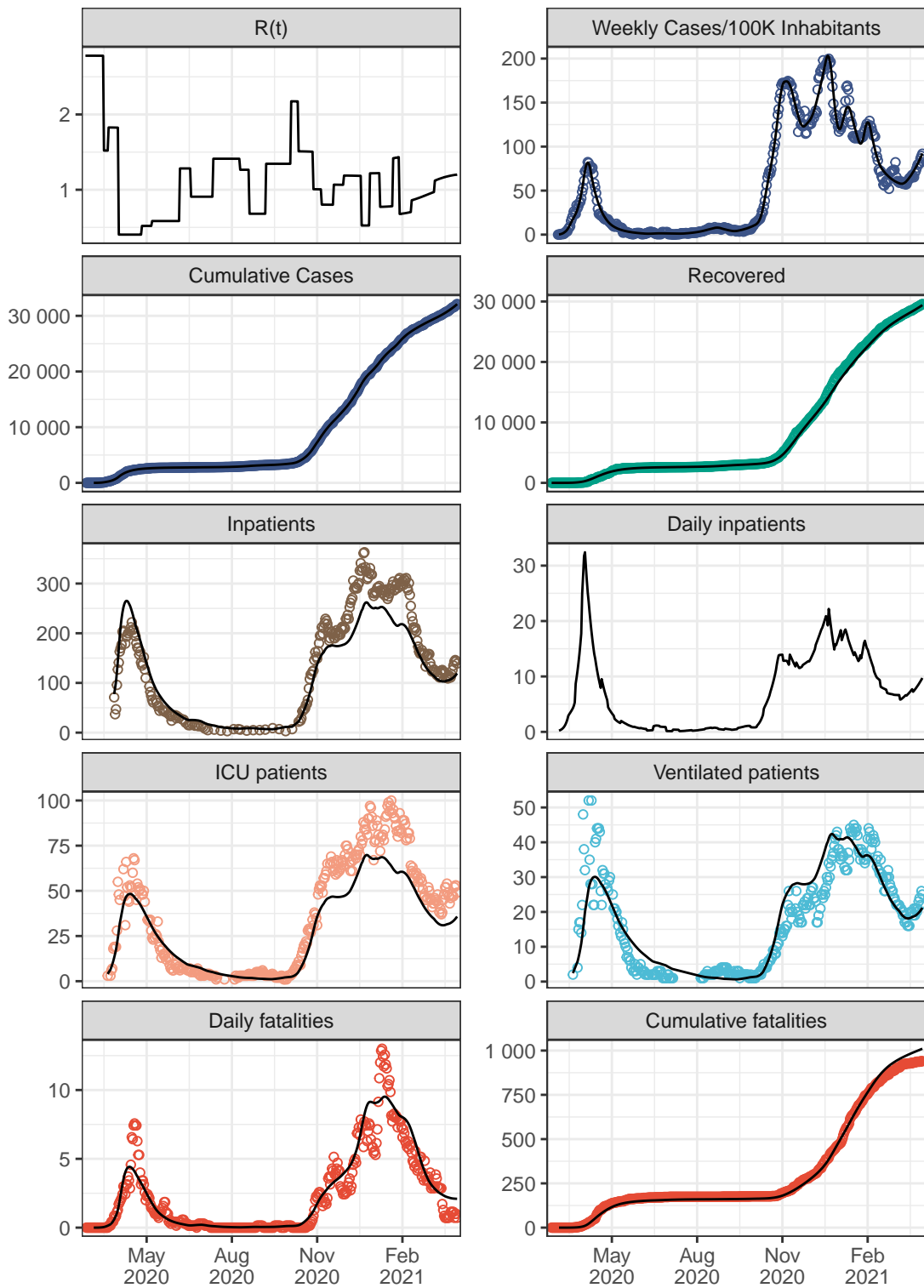
North Rhine–Westphalia



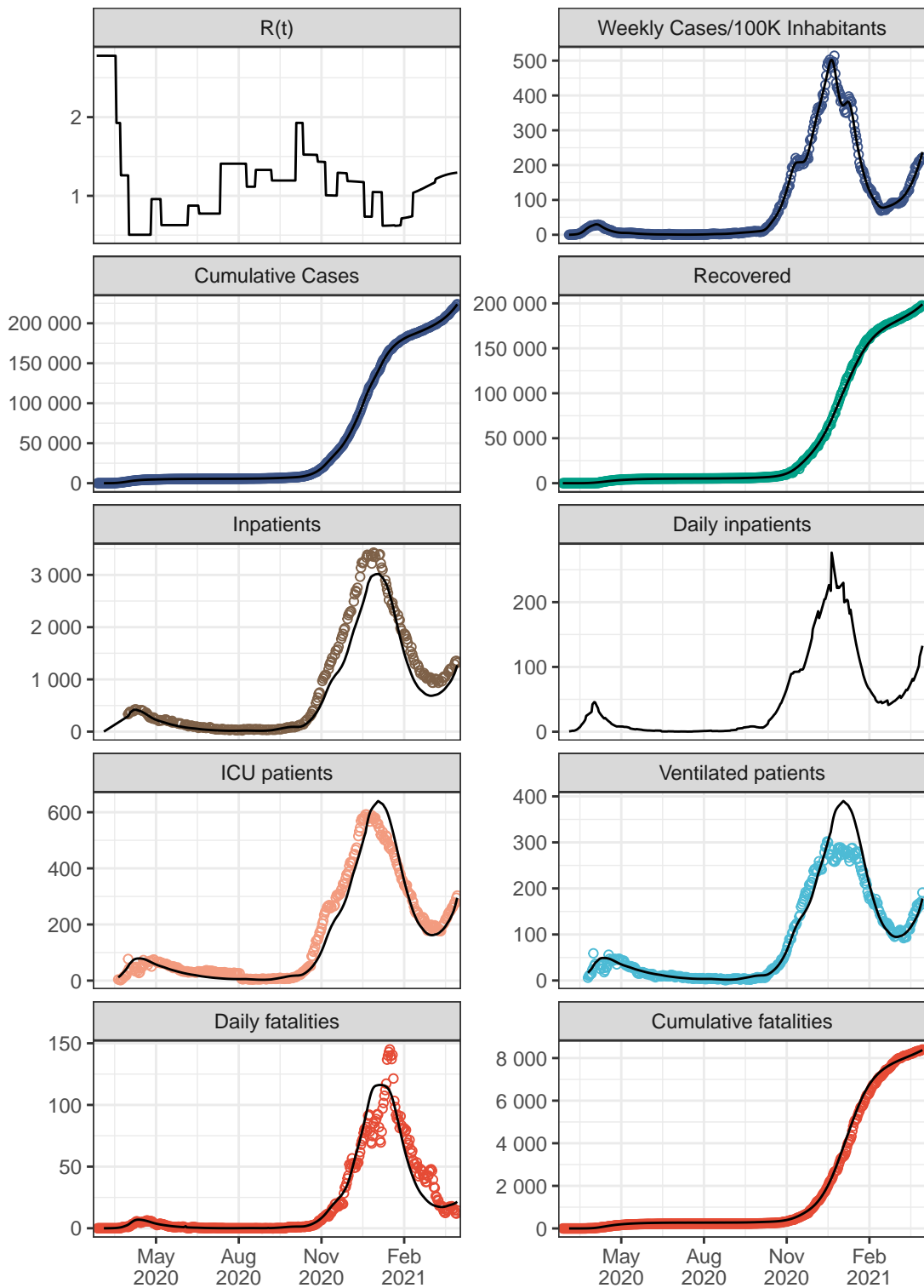
Rhineland-Palatinate



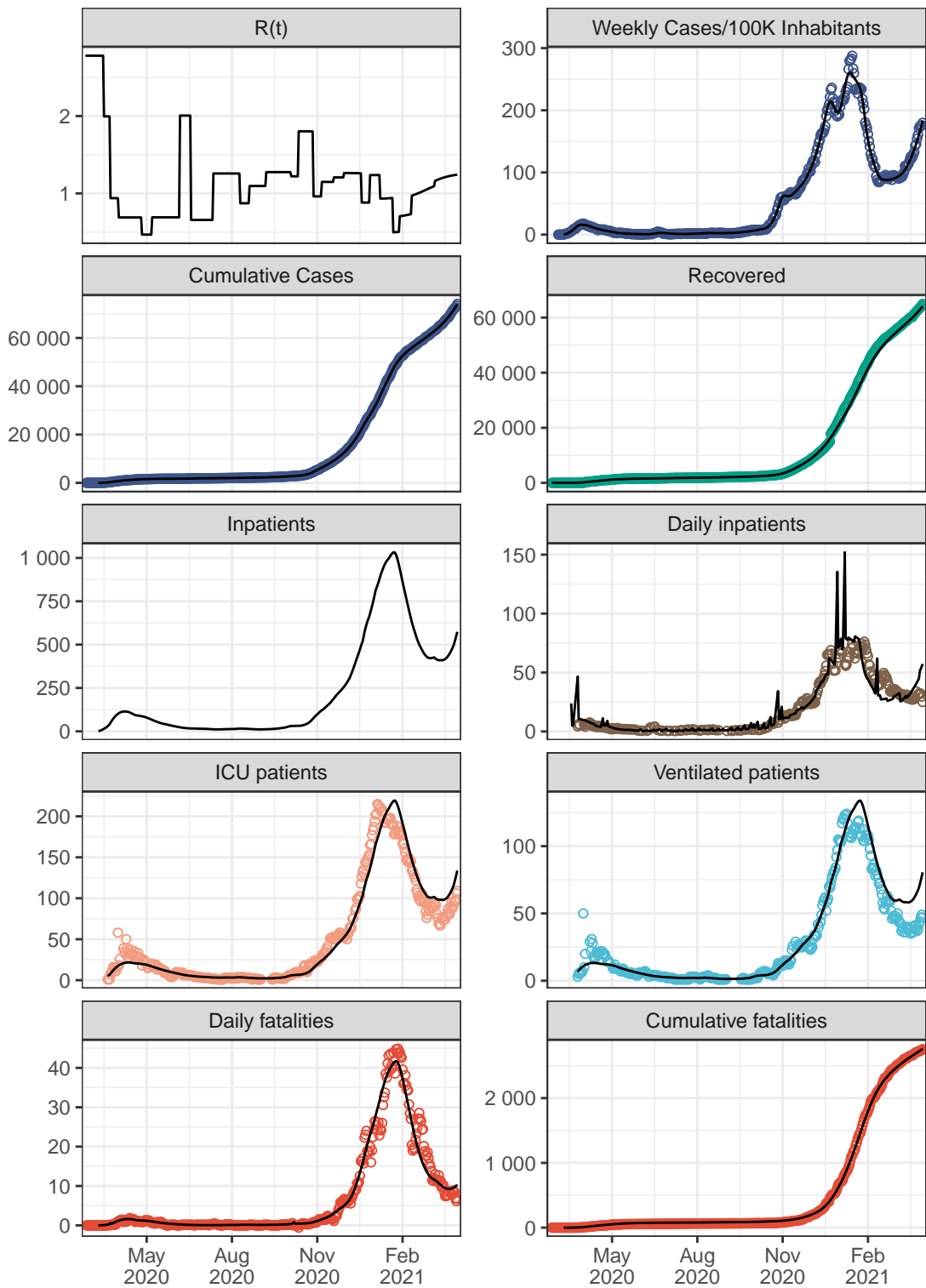
Saarland



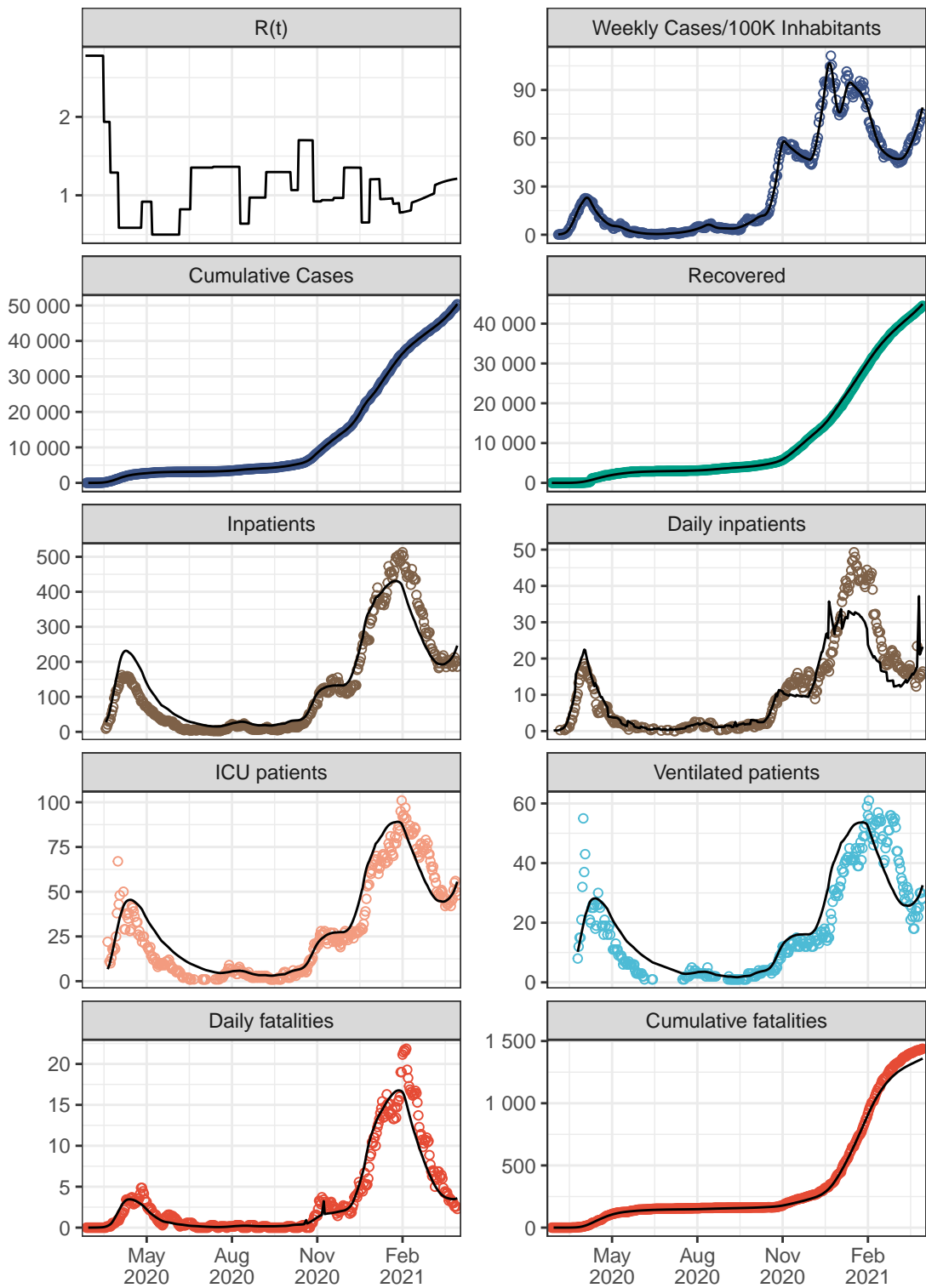
Saxony



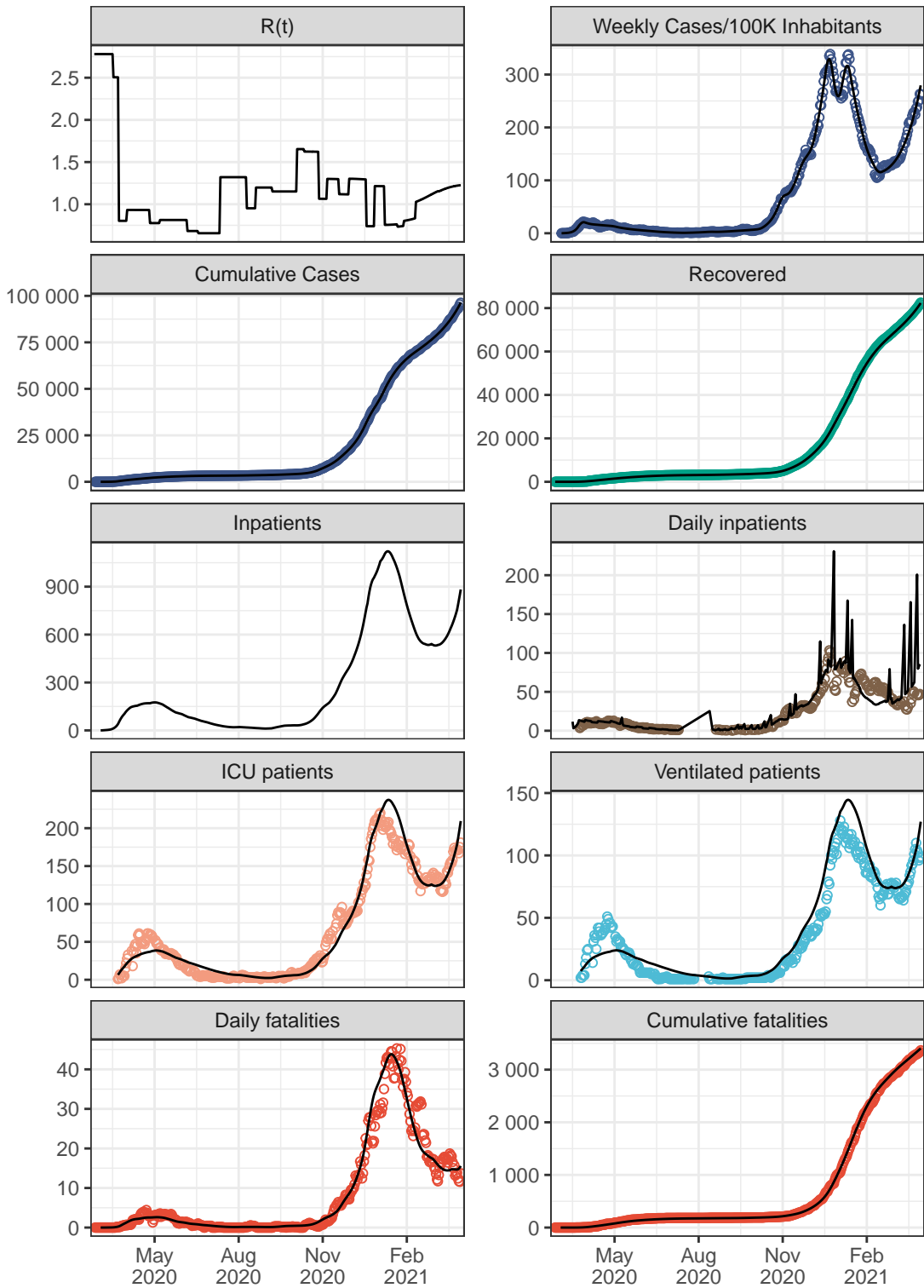
Saxony-Anhalt



Schleswig-Holstein

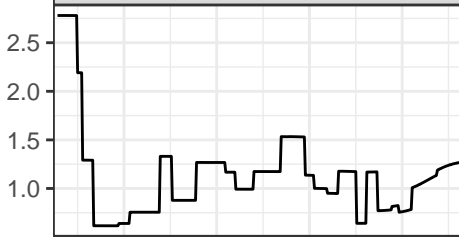


Thuringia

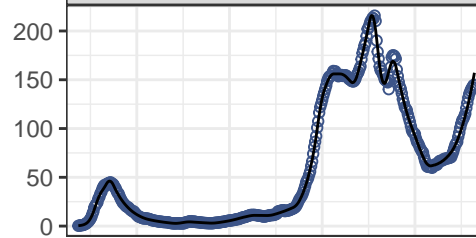


Germany

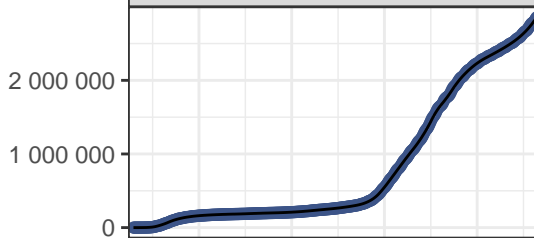
$R(t)$



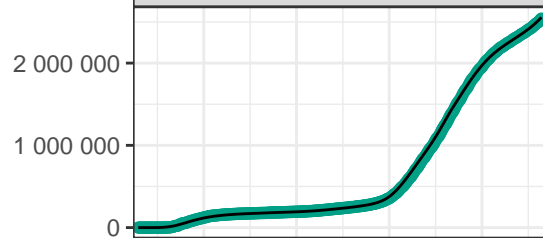
Weekly Cases/100K Inhabitants



Cumulative Cases



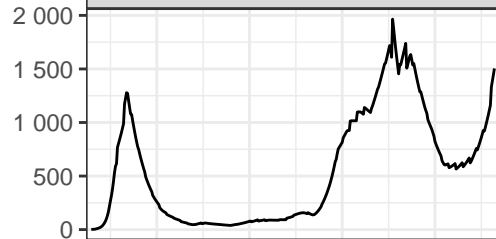
Recovered



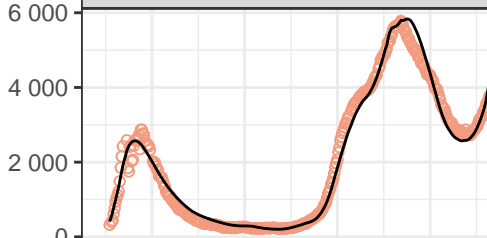
Inpatients



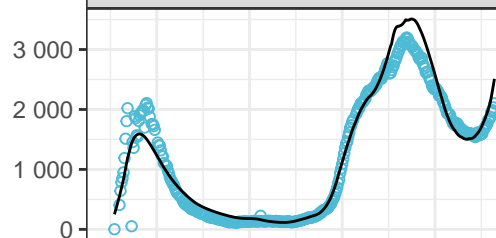
Daily inpatients



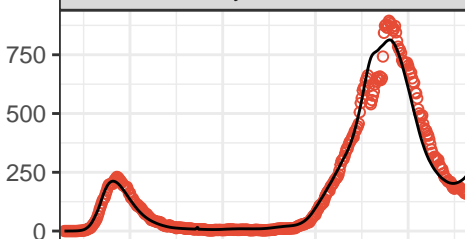
ICU patients



Ventilated patients



Daily fatalities



Cumulative fatalities

