

Supplementary Information

# A Novel Intrauterine Device for the Spatio-Temporal Release of Norethindrone Acetate as a Counter-Estrogenic Intervention in the Genitourinary Syndrome of Menopause

Ahmed Abdelgader, Mershen Govender, Pradeep Kumar and Yahya E. Choonara \*

Wits Advanced Drug Delivery Platform Research Unit, Department of Pharmacy and Pharmacology,  
School of Therapeutic Sciences, Faculty of Health Sciences, University of the Witwatersrand, Johannesburg,  
7 York Road, Parktown 2193, South Africa

\* Correspondence: yahya.choonara@wits.ac.za; Tel.: +27-11-717-2052

## S1. Wavescan of NETA and EC/PCL in Acetonitrile:Methanol

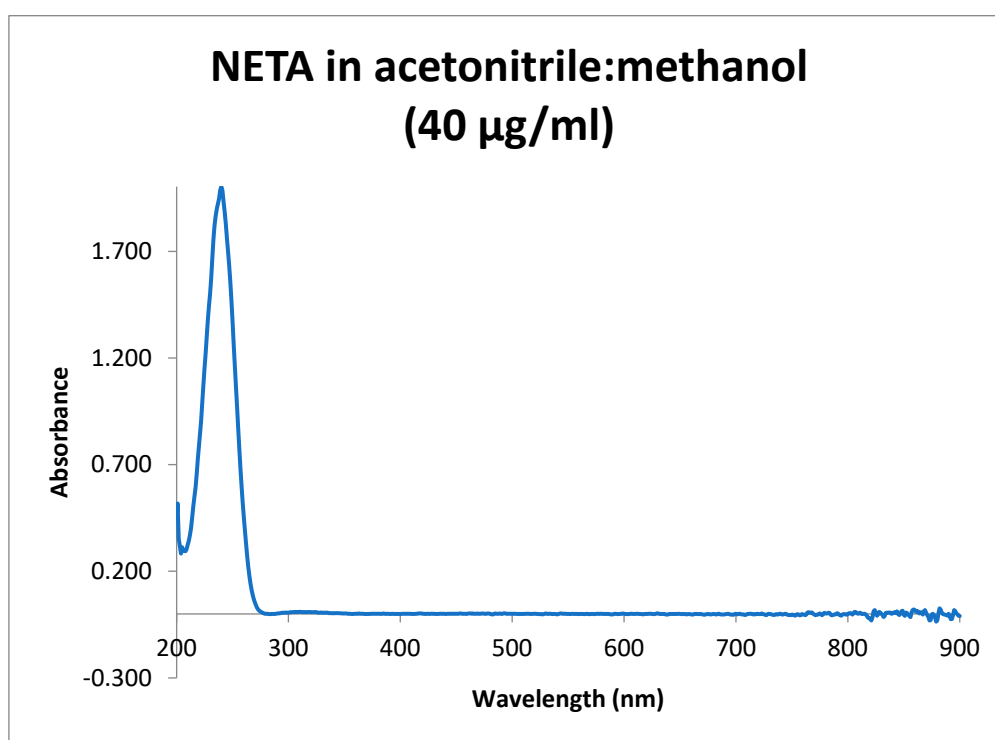
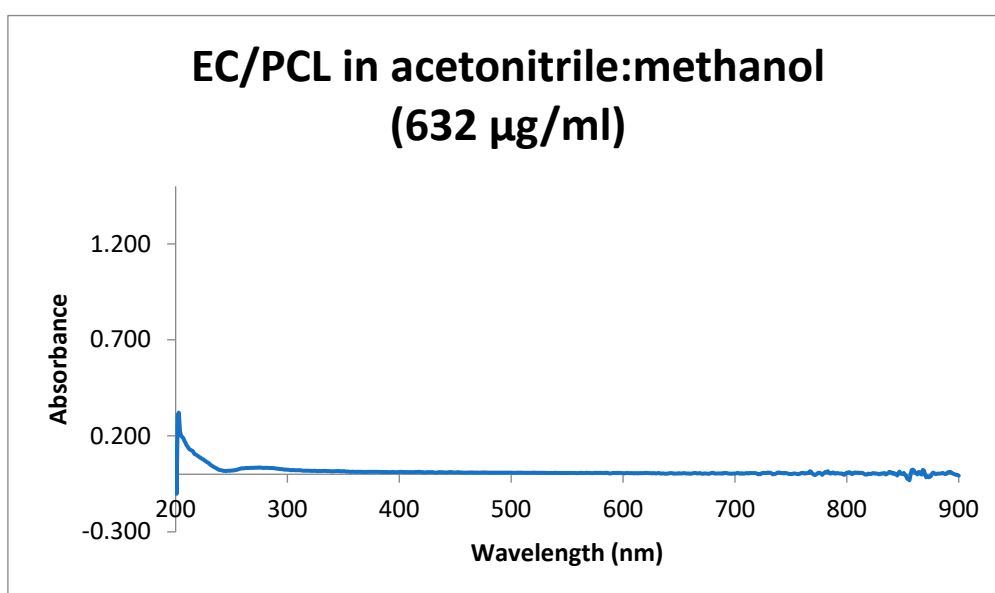
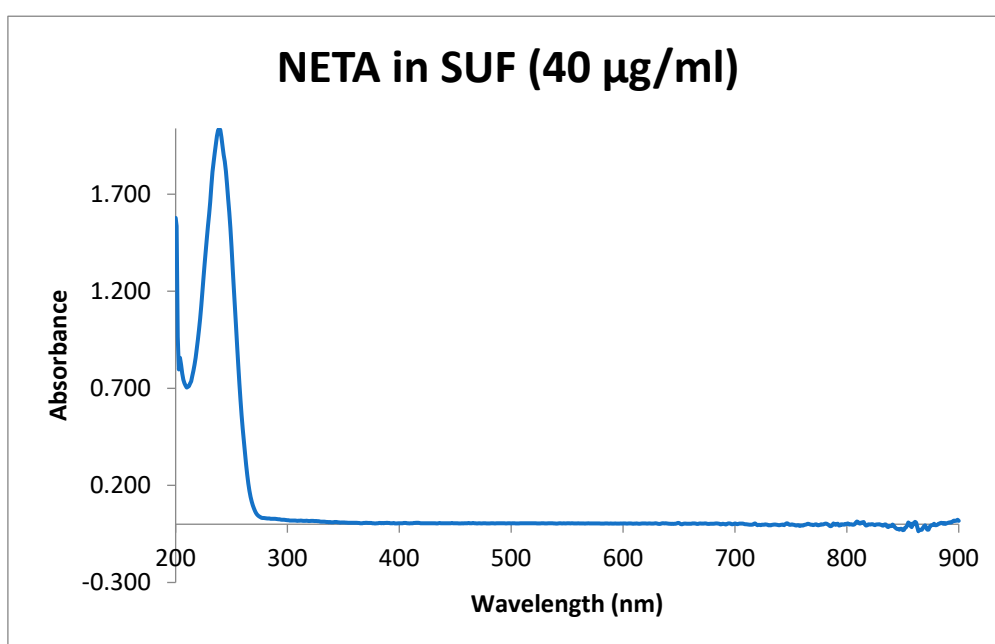


Figure S1. Wavescan of NETA in acetonitrile:methanol at 40 µg/ml.

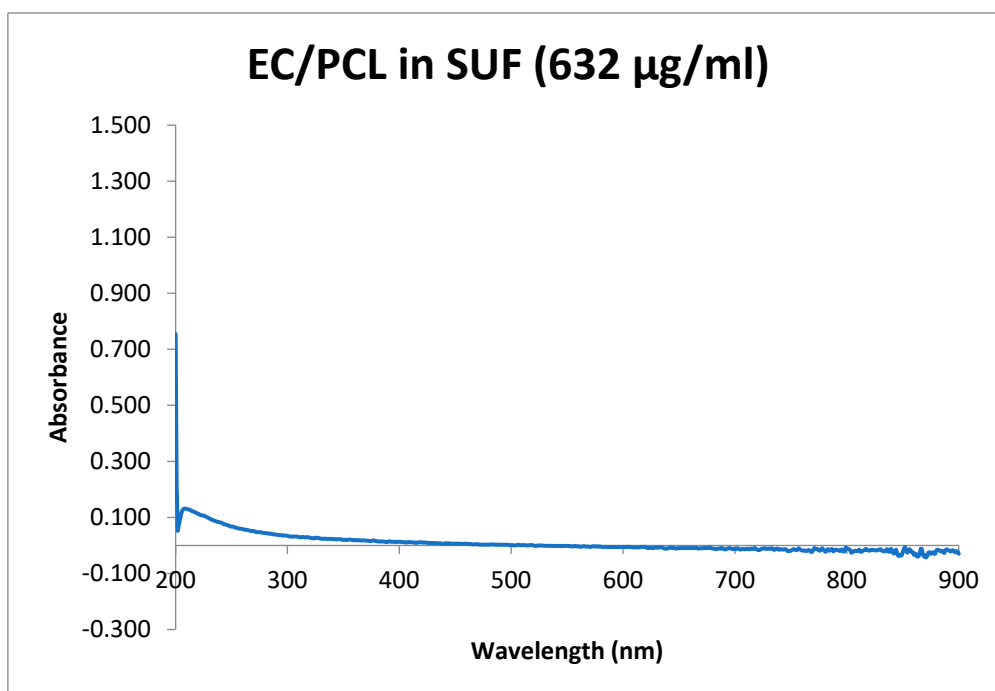


**Figure S2.** Wavescan of EC/PCL in acetonitrile:methanol at 632  $\mu\text{g/ml}$ .

**S2. Wavescan of NETA and EC/PCL in SUF**



**Figure S3.** Wavescan of NETA in SUF at 40  $\mu\text{g/ml}$ .



**Figure S4.** Wavescan of EC/PCL in SUF at 632 µg/ml.