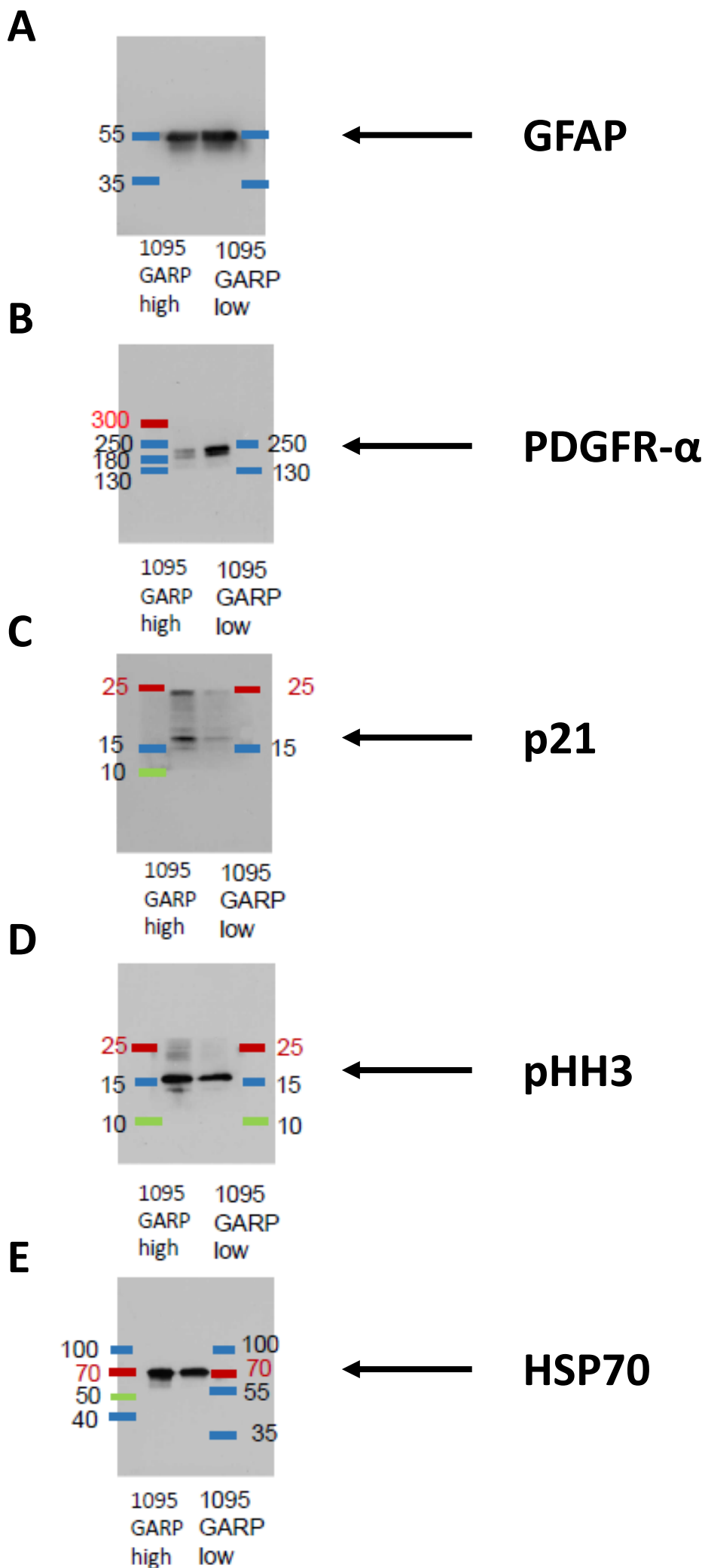


Original Images for Blots (Figure 5)



Original Images for Blots (Figure 5): Original, uncropped, and unadjusted blot images shown in Figure 5. The following proteins were analyzed: (A) glial fibrillary acidic protein (GFAP), (B) platelet-derived growth factor receptor alpha (PDGFR- α), (C) p21, (D) phosphorylated histone H3 (PHH3), and (E) HSP70 was used as a loading control. Protein size (kDa) is indicated by the ladders on the left and right sides of the membranes.