

SUPPORTING INFORMATION

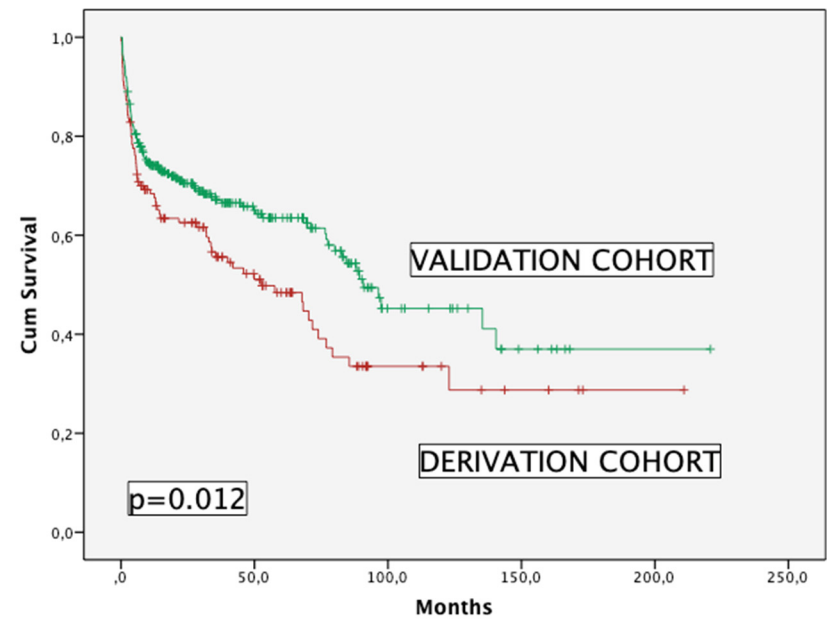
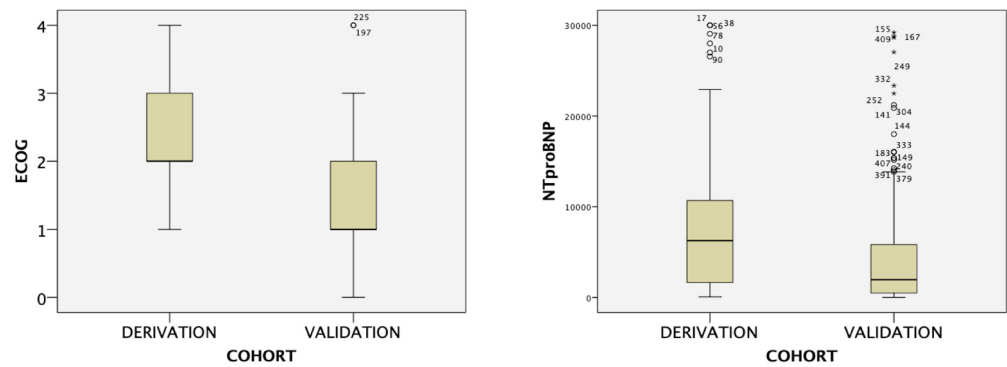


Figure S1. Overall survival in derivation and validation cohorts.



ECOG: Eastern Cooperative Oncology Group Performance Status, NT-proBNP: N-terminal pro-type-B natriuretic peptide,

Figure S2. Box-plot showing differences in ECOG and NTproBNP between both cohorts.

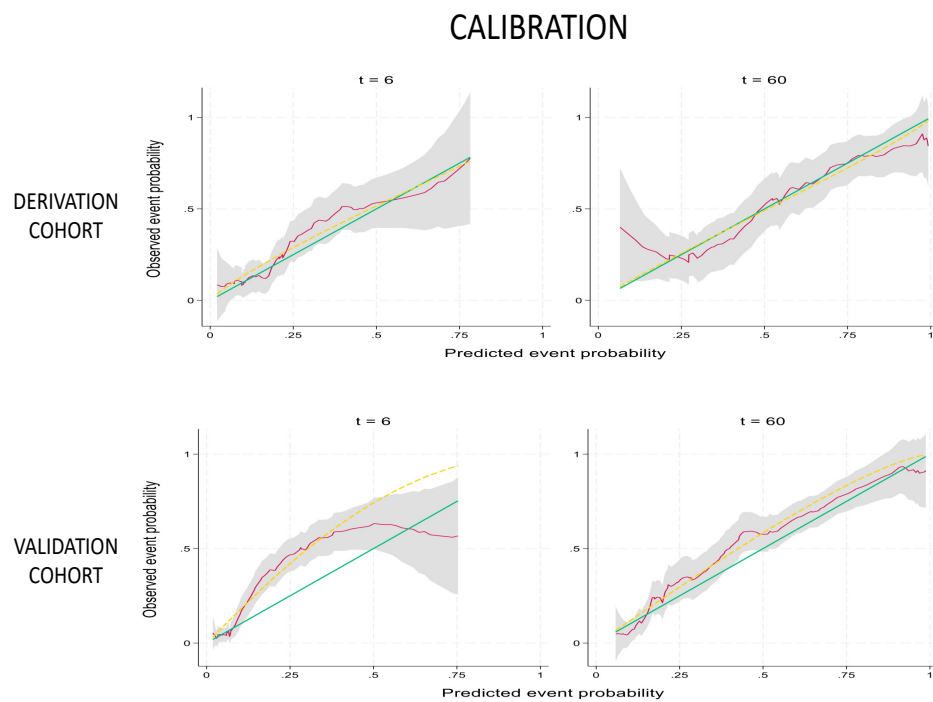
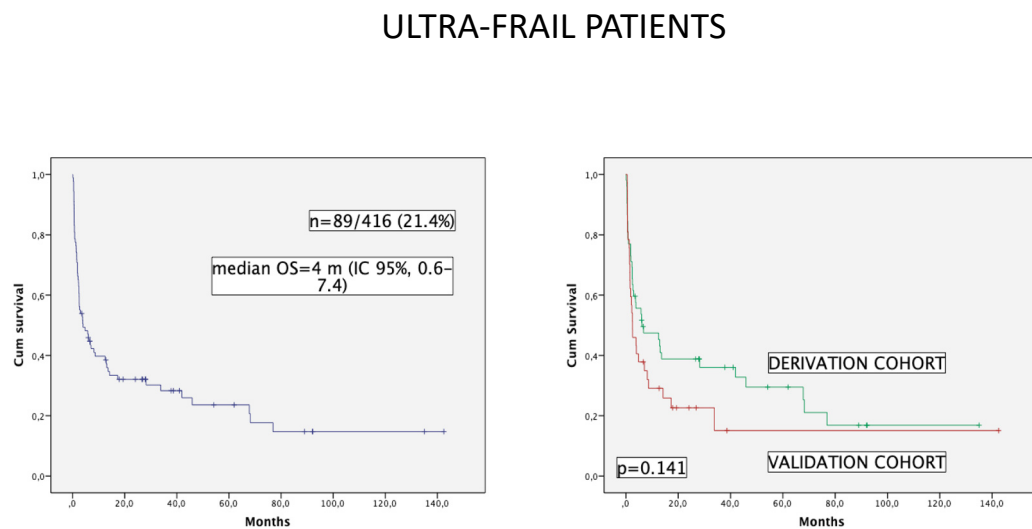
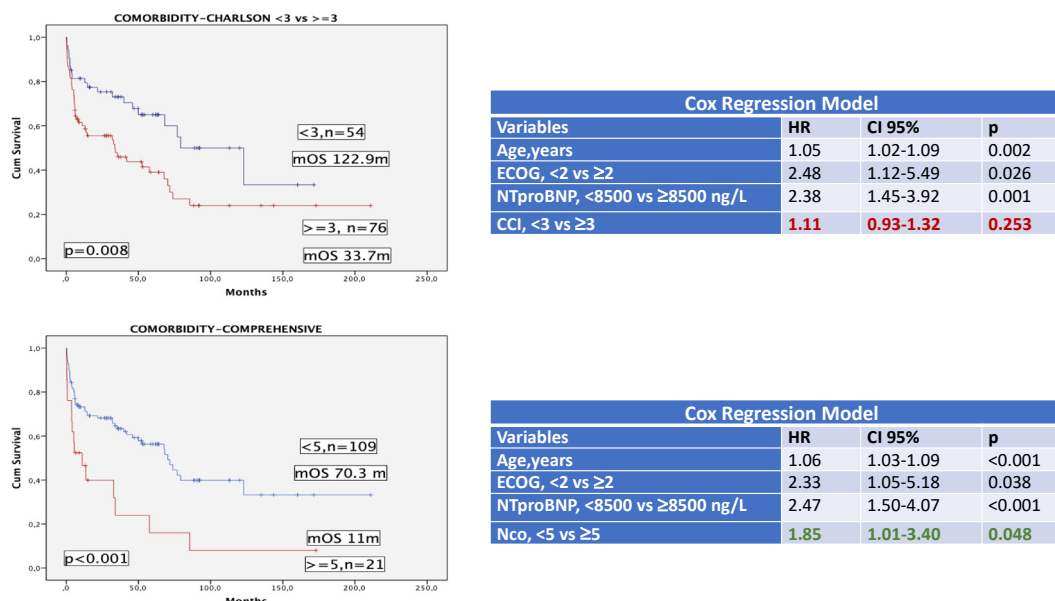


Figure S3. Calibration of both cohorts.



IC: Confidence Interval, mOS: median overall survival, m:months

Figure S4. Overall survival of ultra-frail patients.



CI: confidence interval, CCI: Charlson Comorbidity Index, ECOG: Eastern Cooperative Oncology Group Performance Status, HR: hazard ratio, Nco: number of comorbidities (comprehensive approach), NT-proBNP: N-terminal pro-type-B natriuretic peptide, m: months, mOS: median overall survival

Figure S5. Overall survival and Cox regression models to assess comorbidity according with Charlson Comorbidity Index (< 3 vs ≥ 3) or number of comorbidities by a comprehensive approach (< 5 vs ≥ 5).

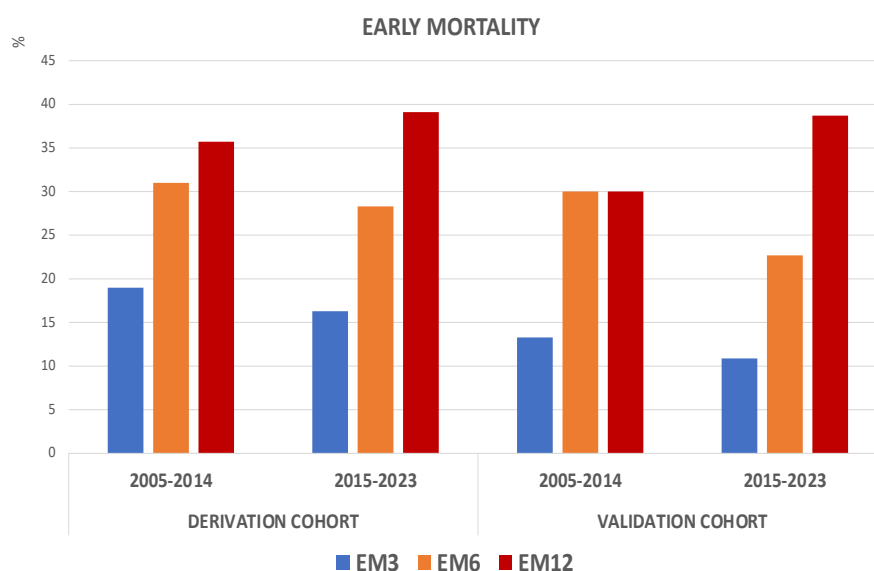


Figure S6. Early mortality (EM) at 3, 6, and 12 months according to cohort and period of time.

Table S1. Percentage of comorbidities in the derivation cohort (comprehensive approach).

COMORBIDITY	%
Hyperlipemia	54.6
Hypertension	45.4
Heart disease	36.4
Lung disease	20.9
Multiple myeloma	19.4
Type 2 diabetes	17.8
Neurological disorder	15.5
Obesity	13.7
Prior malignancy	12.4
Gastrointestinal disease	11.1
Thromboembolism	10.9
MGUS	9.2
Psychiatric disorder	8.6
Liver disease	7.8
Rheumatologic disorder	5.4
Low weight	4.7
Waldenström macroglobulinemia	3
Hepatitis B virus	2.3
Cutaneous disease	1.6
Hepatitis C virus	0.8
Splenectomy	0.8
Human immunodeficiency virus	0

Table S2. Percentage of patients with high-risk variables in both cohorts for the three early mortality cutoffs (3, 6, and 12 months).

	EM3		EM6		EM12	
	DER	VAL	DER	VAL	DER	VAL
AGE ≥70	43.5	59.5	48.7	59.4	51	49.5
ECOG ≥2	95.6	70.3	92.3	62.5	86.3	50.5
NT ≥8500	91.3	62.2	69.2	43.8	58.8	35.1
Nco5	23.8		47.6		61.9	

DER: Derivation Cohort, ECOG PS: Eastern Cooperative Oncology Group Performance Status, EM: Early Mortality, NT-proBNP: N-terminal pro–type-B natriuretic peptide, Nco5: Five or more comorbidities, VAL: Validation Cohort