

Supplementary Materials:

Isaac Kwesi Nooni ¹, Faustin Katchele Ogou ², Daniel Fiifi Tawiah Hagan ³, Abdoul Aziz Saidou Chaibou ⁴, Nana Agyemang Prempeh ⁵, Francis Mawuli Nakoty ⁶, Zhongfang Jin ⁷ and Jiao Lu ^{1,*}

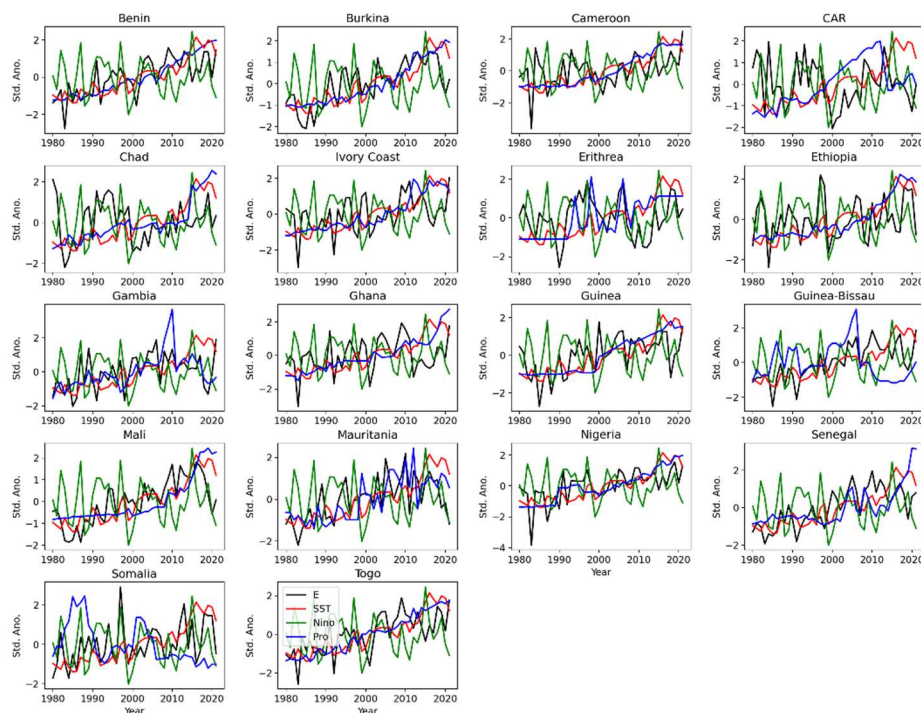


Figure S1. Trends in maize production anomalies in response to E and teleconnection (SST and El Niño 3.4 index).

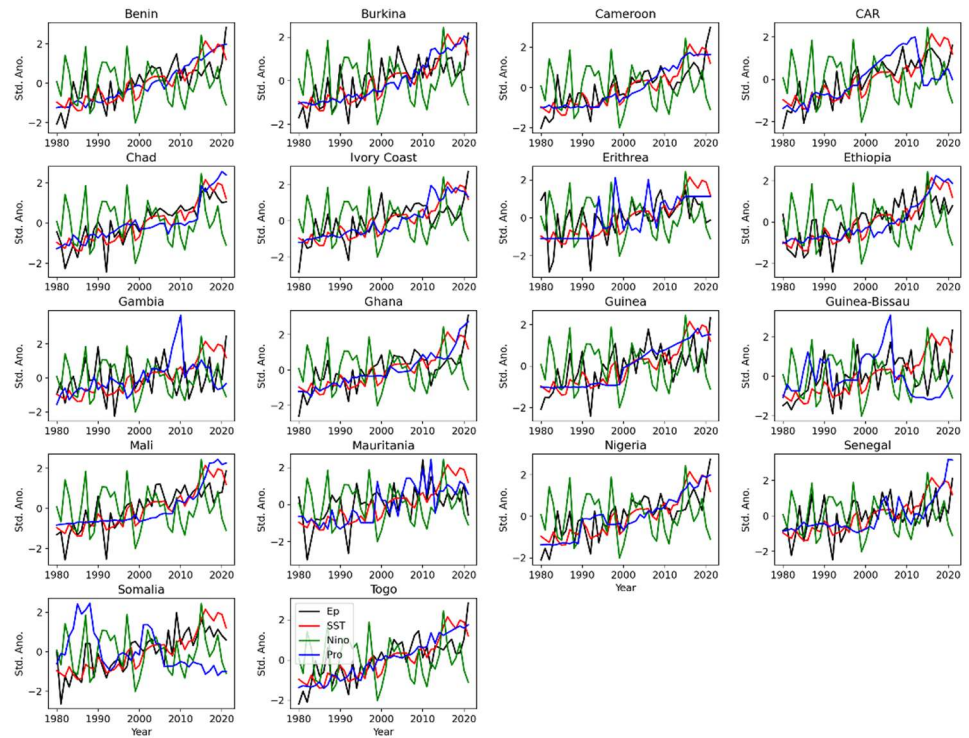


Figure S2. Trends in maize production anomalies in response to Ep and teleconnection (SST and El Niño 3.4 index).

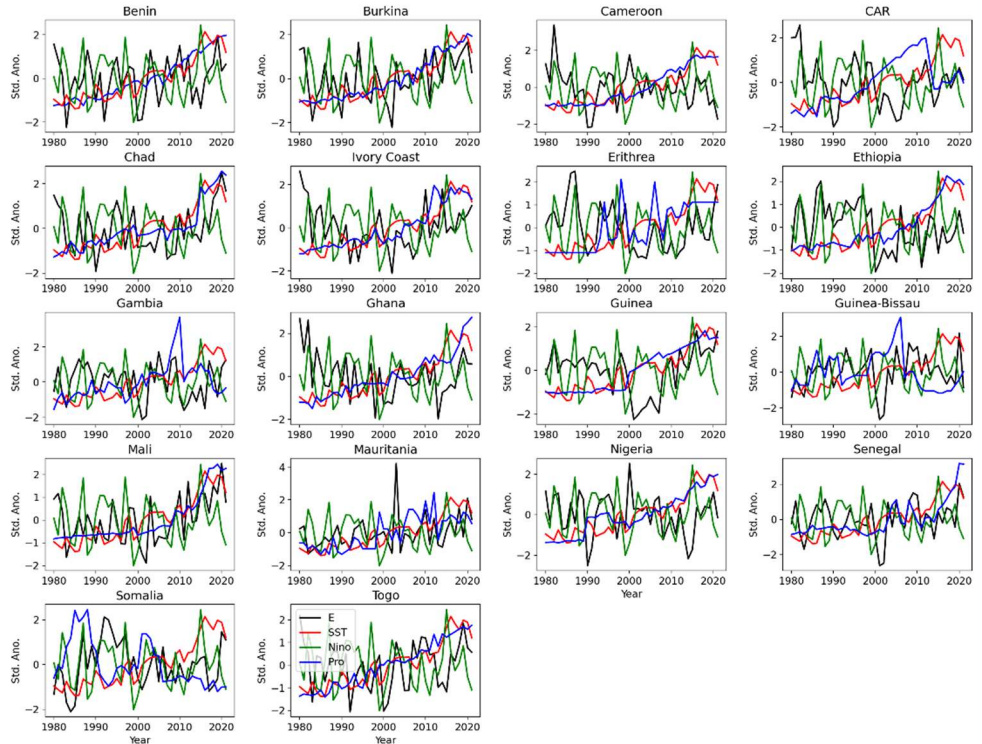


Figure S3. Trends in maize production anomalies in response to PRE and teleconnection (SST and El Niño 3.4 index).

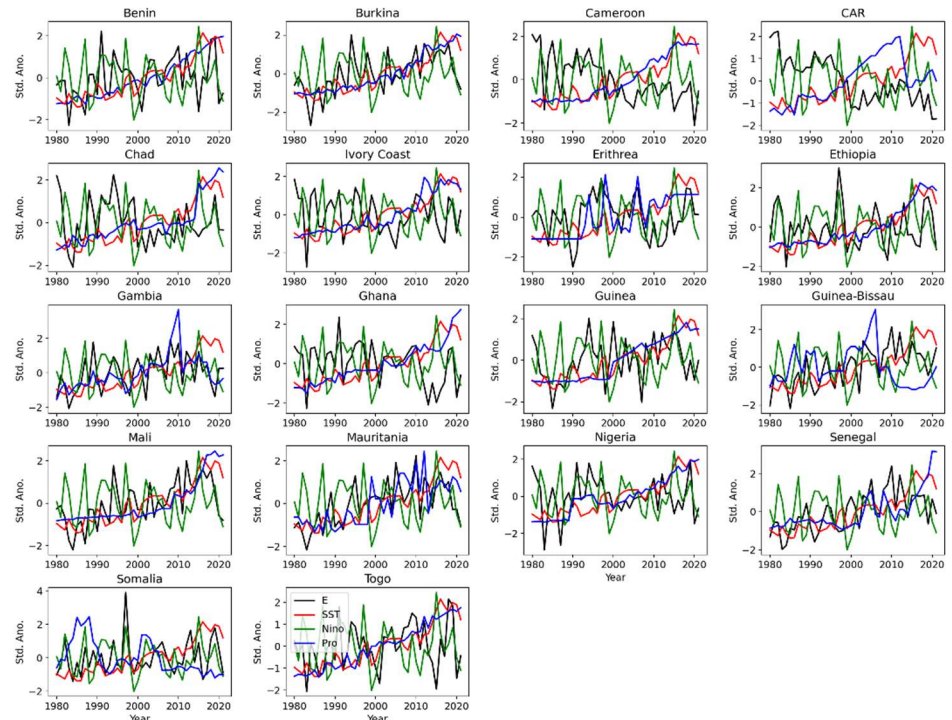


Figure S4. Trends in maize production anomalies in response to SMsurf and teleconnection (SST and El Niño 3.4 index).

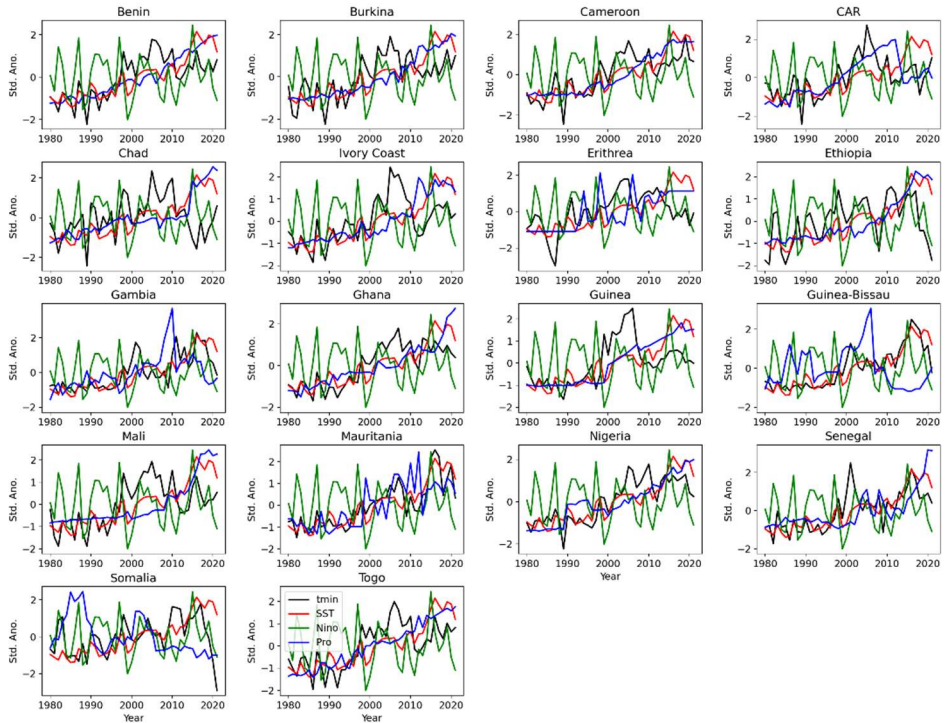


Figure S5. Trends in maize production anomalies in response to SM and teleconnection (SST and El Niño 3.4 index).