

Supplementary material

“The role of estuarine wetlands (saltmarshes) in sediment microplastics retention”

C. Marisa R. Almeida^{1,2,*}, Iraide Sáez-Zamacona^{1,3}, Diogo Silva^{1,3}, Sabrina M. Rodrigues^{1,3}, Ruben Pereira^{1,3} and Sandra Ramos^{1,*}

¹ CIIMAR, Interdisciplinary Centre of Marine and Environmental Research, University of Porto, Portugal

² Chemistry and Biochemistry Department, Faculty of Sciences of University of Porto, Portugal

³ ICBAS, Abel Salazar Institute of Biomedical Sciences, University of Porto, Portugal

* Correspondence: calmeida@ciimar.up.pt (CMRA), Tel.: +351 223401822; ssramos@ciimar.up.pt (SR), Tel.: +351 2234101811

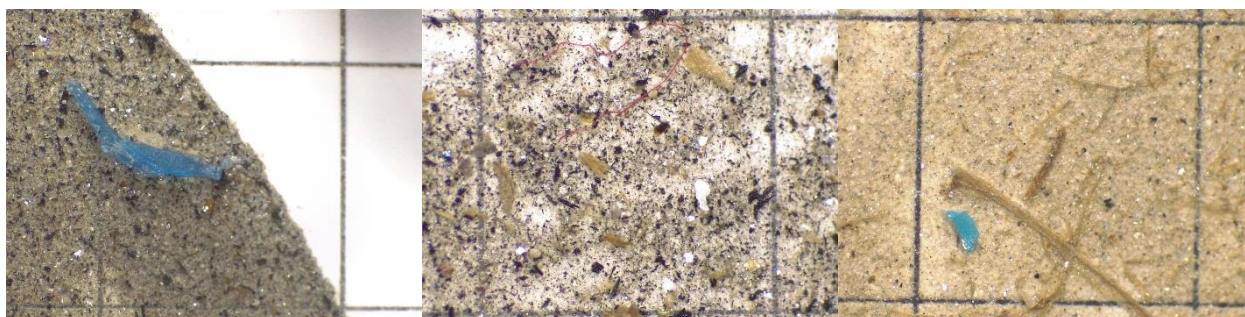


Figure S1 – Examples of MPs (blue fragments and red fibre) observed in sediment samples

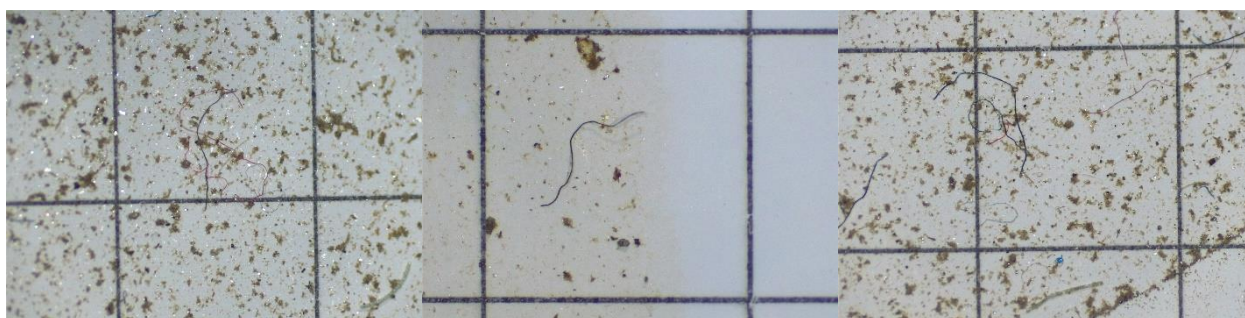


Figure S2 – Examples of MPs (fibres) observed in water samples