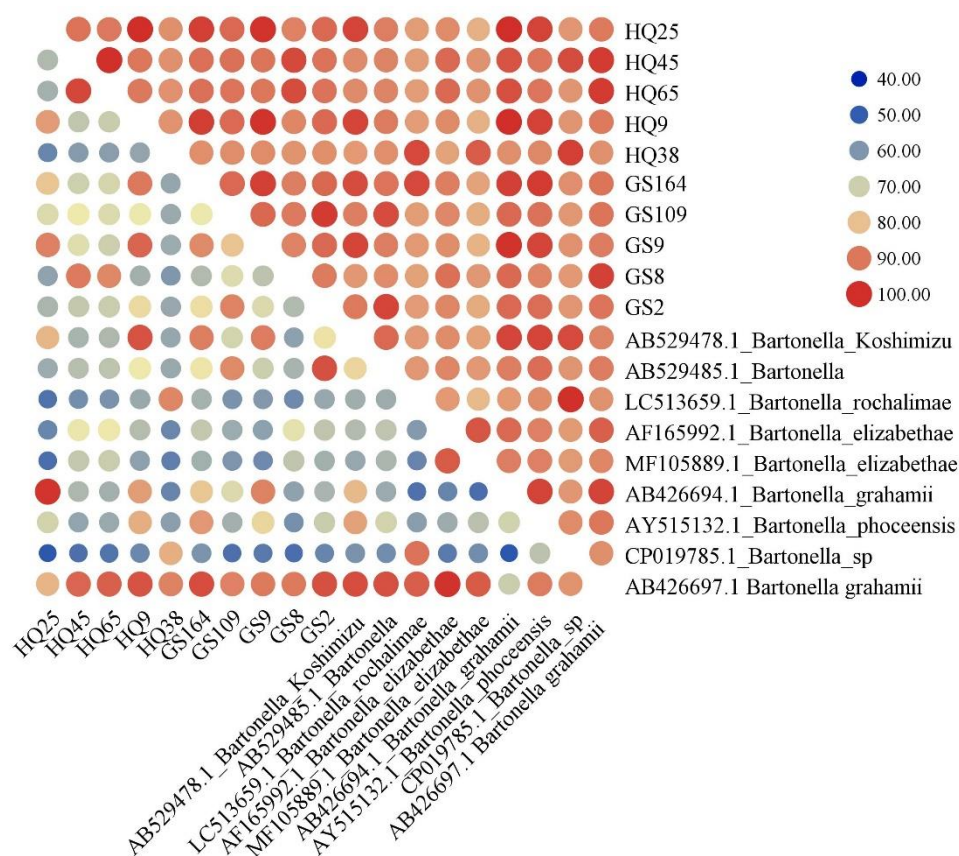


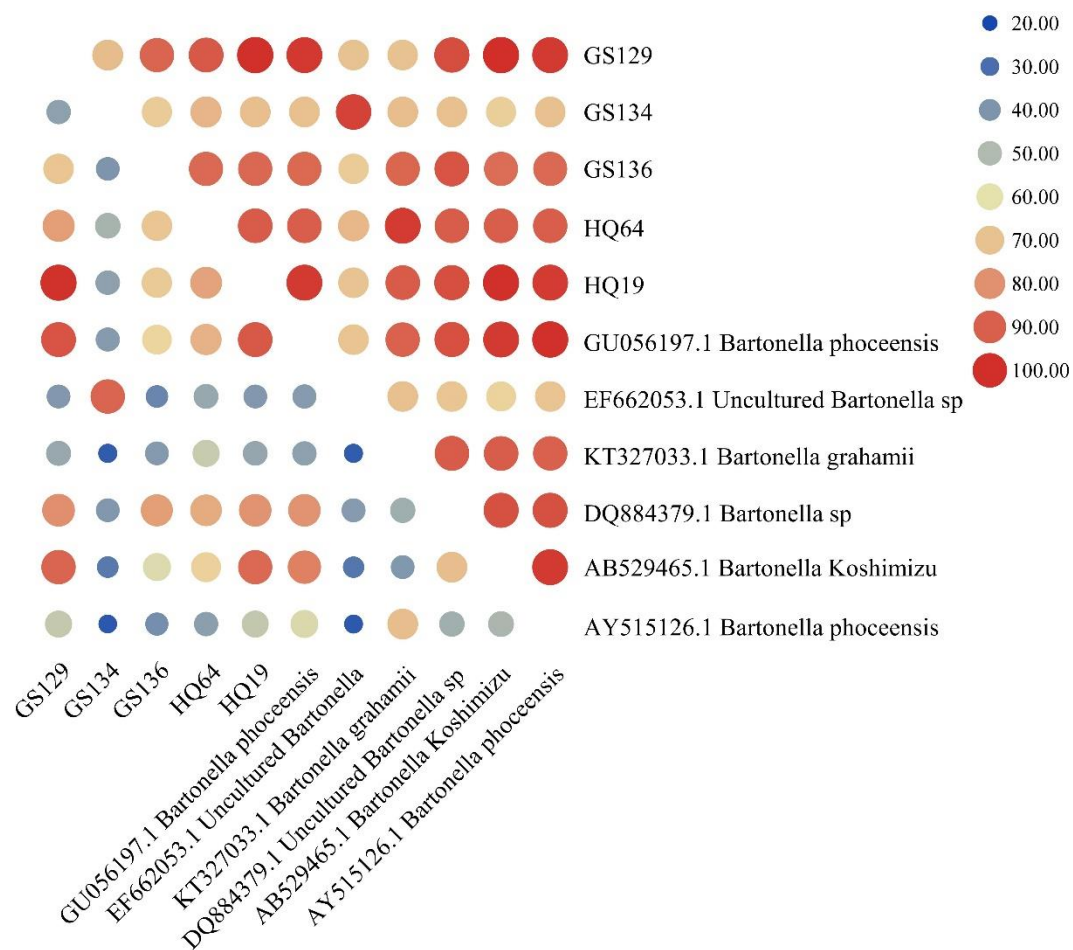
**Fig. S1.** Identity comparisons of nucleotide sequence of *Bartonella ssrA* gene (301 bp) in small mammals from this study.



**Fig. S2.** Identity comparisons of nucleotide and amino acid sequence of *Bartonella rpoB* gene

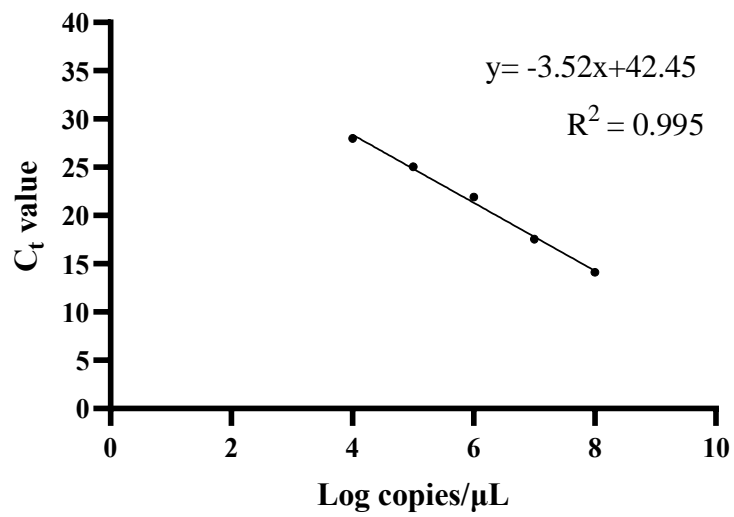
(866bp) in small mammals from this study.

Note: Top right indicates nucleotide sequence identity, while bottom left shows amino acid sequence homology.

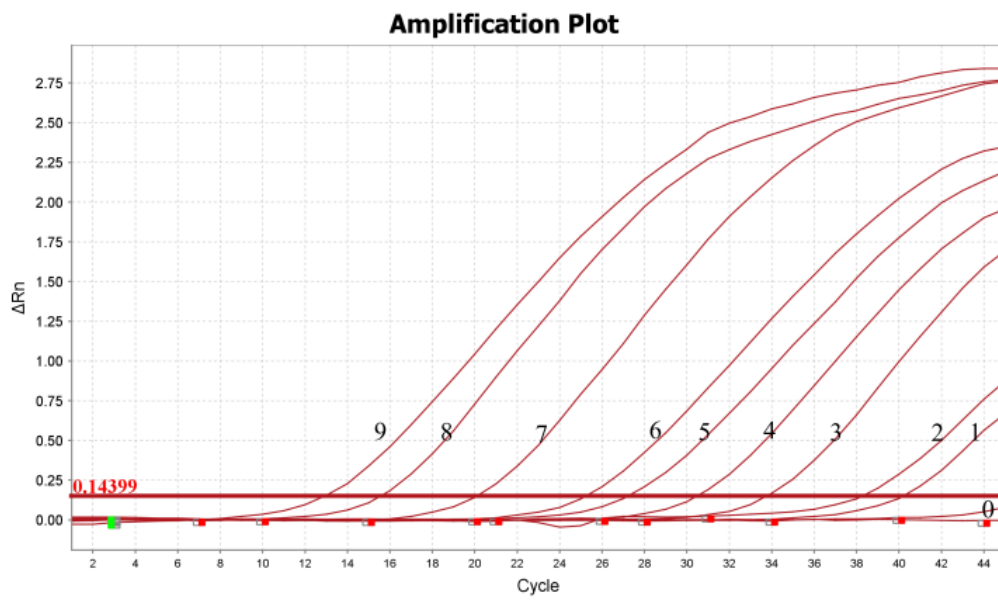


**Fig. S3.** Identity comparisons of nucleotide and amino acid sequence of *Bartonella gltA* gene (375bp) in small mammals from this study.

Note: Top right indicates nucleotide sequence identity, while bottom left shows amino acid sequence homology.



**Fig. S4.** Standard curve. The equation of the standard curve is  $y = -3.477x + 42.23$ , with a correlation coefficient ( $R^2$ ) of 0.995. The slope is -3.477, and the amplification efficiency (E%) is 93.9%.



**Fig. S5.** Sensitivity test results. Copies ranged from  $1.0 \times 10^9$  to  $1.0 \times 10^1$  copies/L; 0 indicates the negative control.



**Fig. S6.** Conventional PCR results. M: Trans2K DNA Marker; 9-1: $1.0 \times 10^9$ - $1.0 \times 10^1$ ; 0: negative control.