

The Synthesis and Characterization of Geopolymers Based on Metakaolin and on Automotive Glass Waste

Ivana Perná, Martina Havelcová, Monika Šupová, Margit Žaloudková and Olga Bičáková



Figure S1. Automotive glass waste used (A and B – general and detailed view on windscreen with protective film, C and D – general and detailed view on windscreen with protective film and heat elements)



Figure S2. Windscreen cutting (A – general view, B –detailed view)

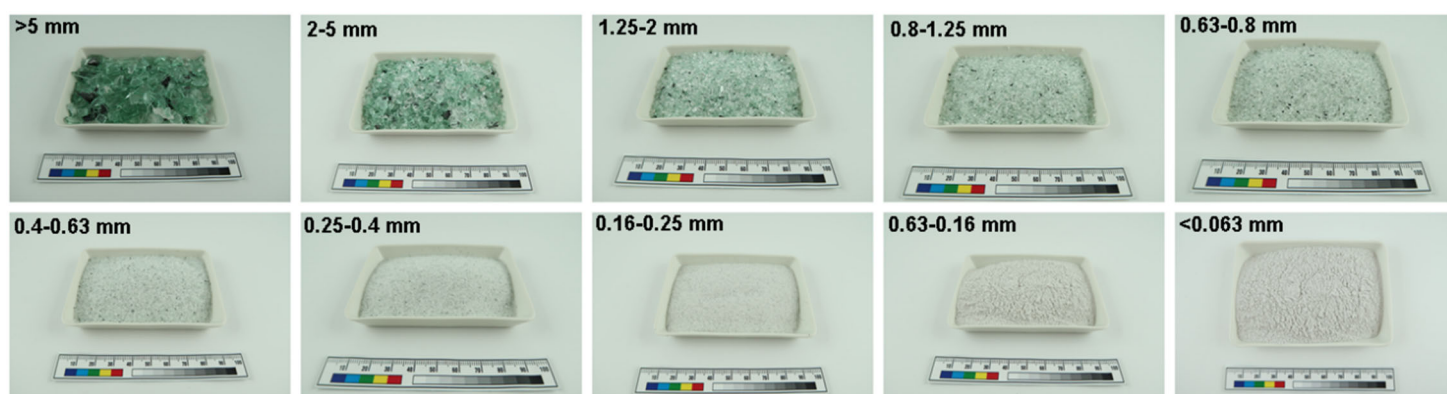


Figure S3. The photographs of AGW1 glass fractions

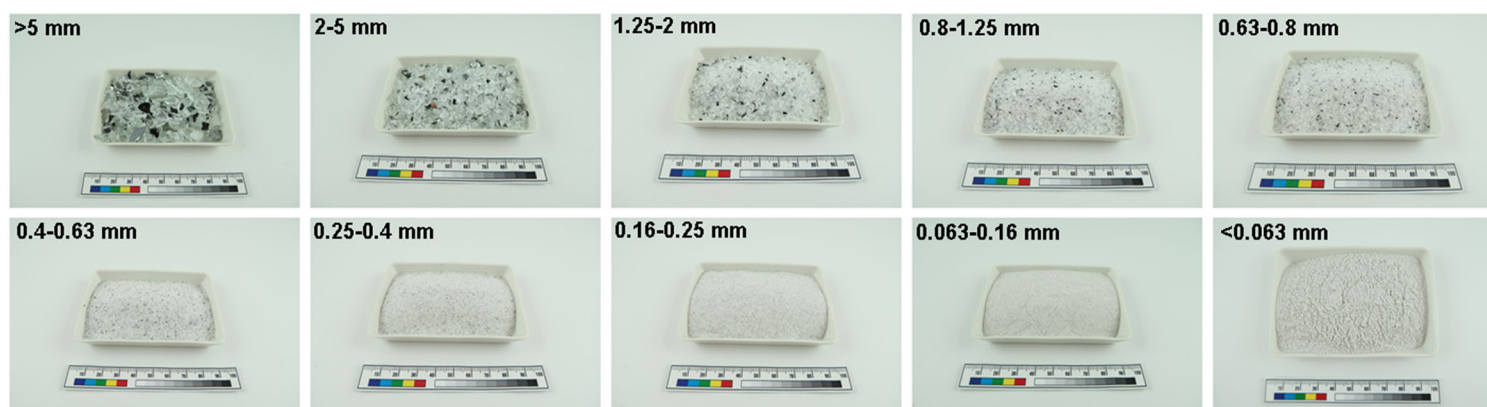


Figure S4. The photographs of AGW2 glass fractions

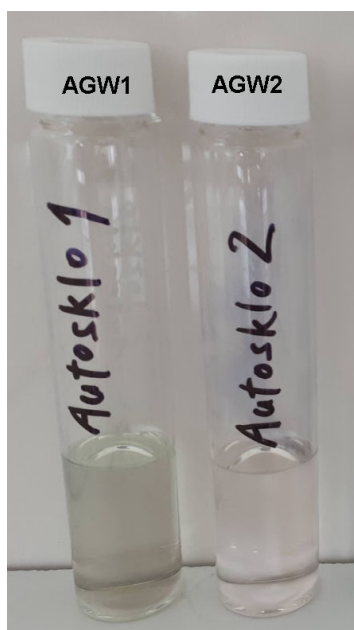


Figure S5. Photographs of the extracts prepared for GC analysis

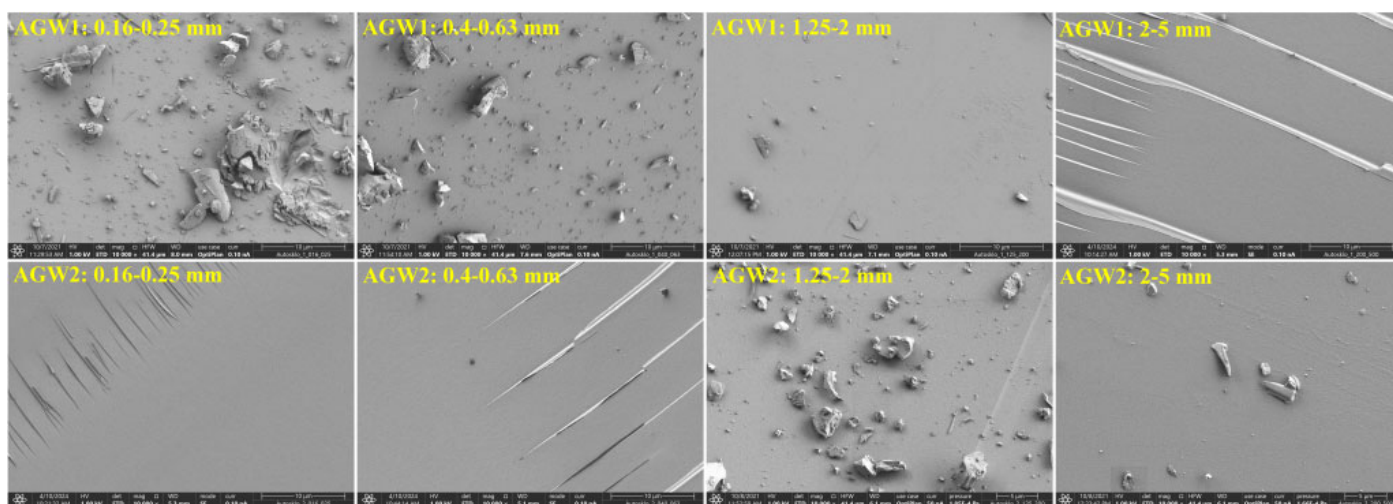


Figure S6. An overview of different AGW fractions (10,000x magnification)

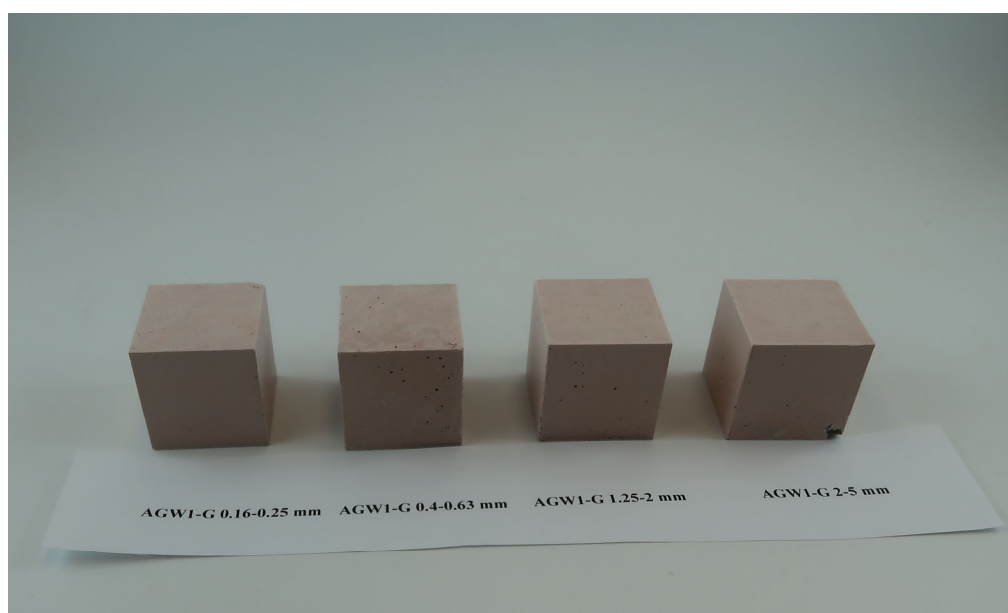


Figure S7. Photographs of the AGW1-G solids

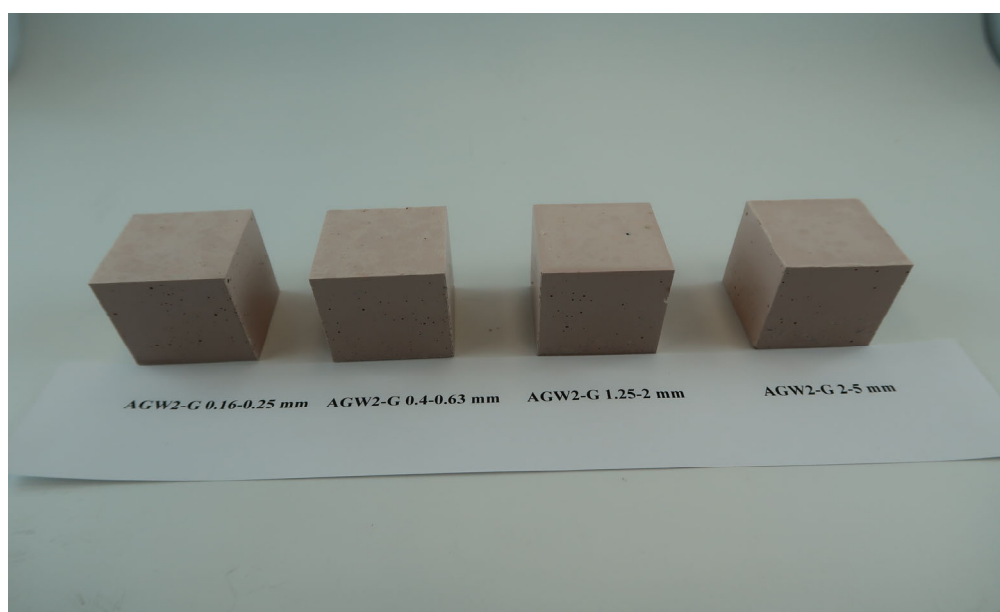


Figure S8. Photographs of the AGW2-G solids