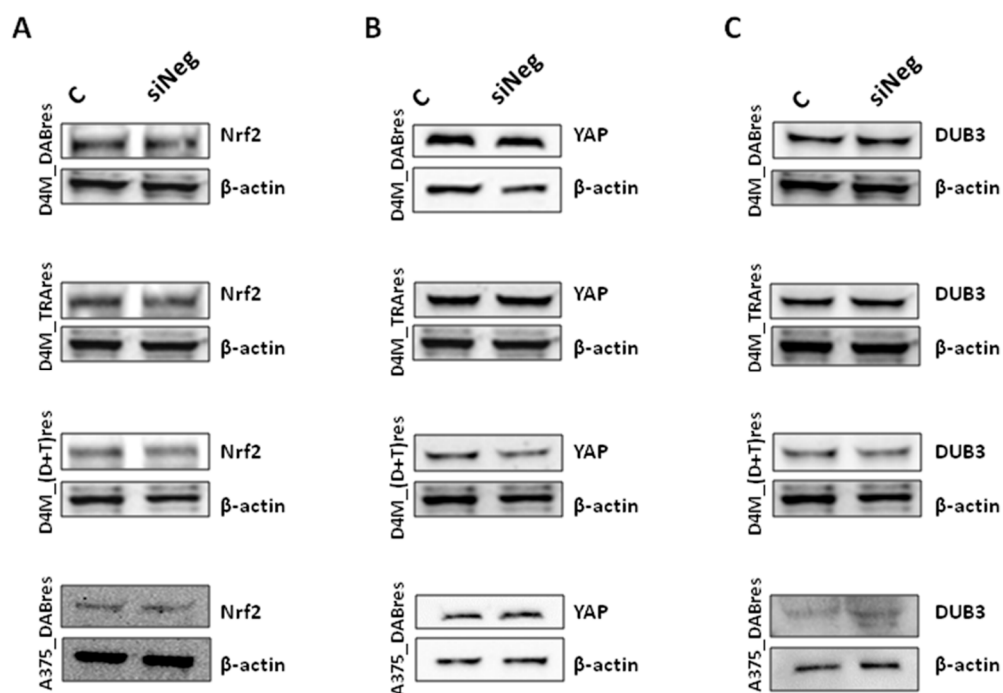


## Supplementary data



**Figure S1** Effect of negative control siRNA (siNeg) treatment on Nrf2 (**panel A**), YAP (**Panel B**), and DUB3 (**Panel C**) expressions in D4M and A375 resistant subclones. Western blot analysis in D4M\_DABres, D4M\_TRAsres, and D4M\_(D+T)res untreated control cells (C) or after 24 h from the treatment with siNeg. Equal protein loading was confirmed by analysis of relative  $\beta$ -actin expressions.