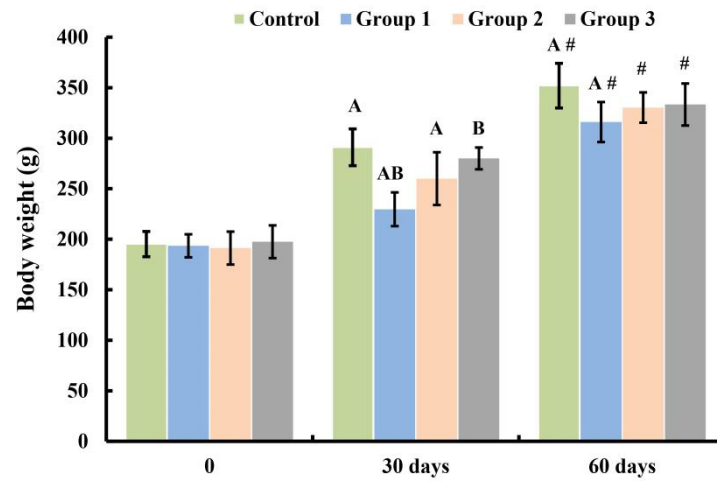
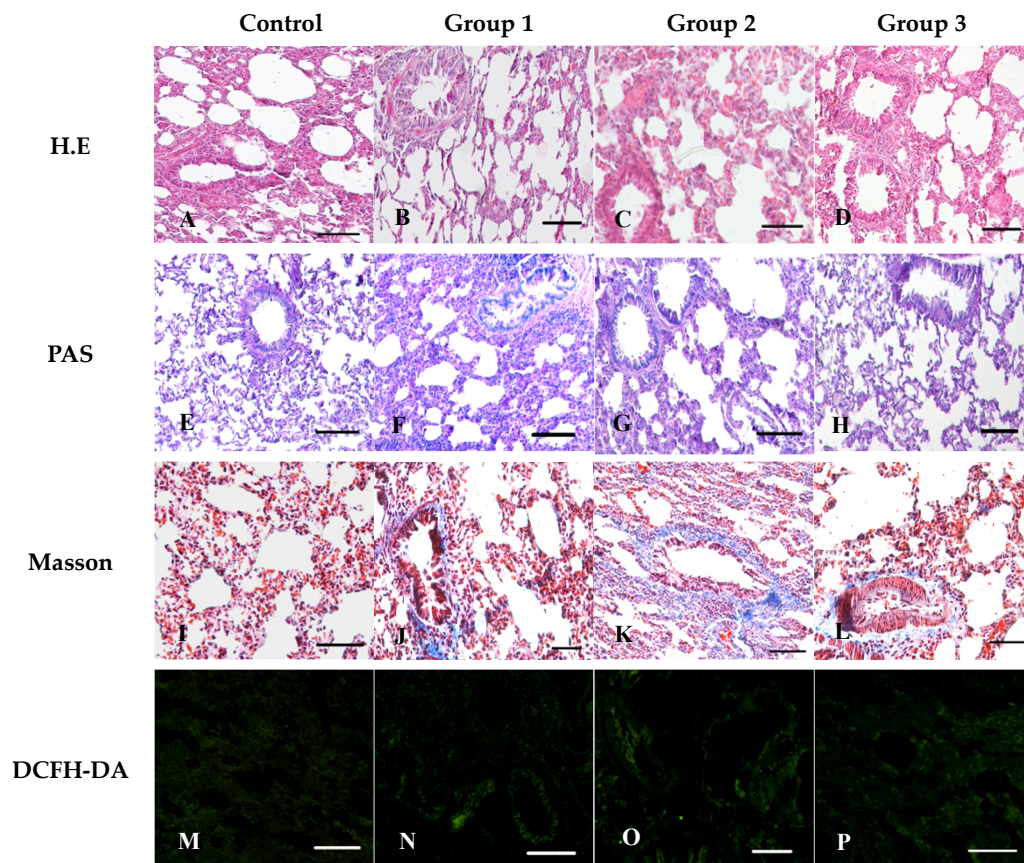




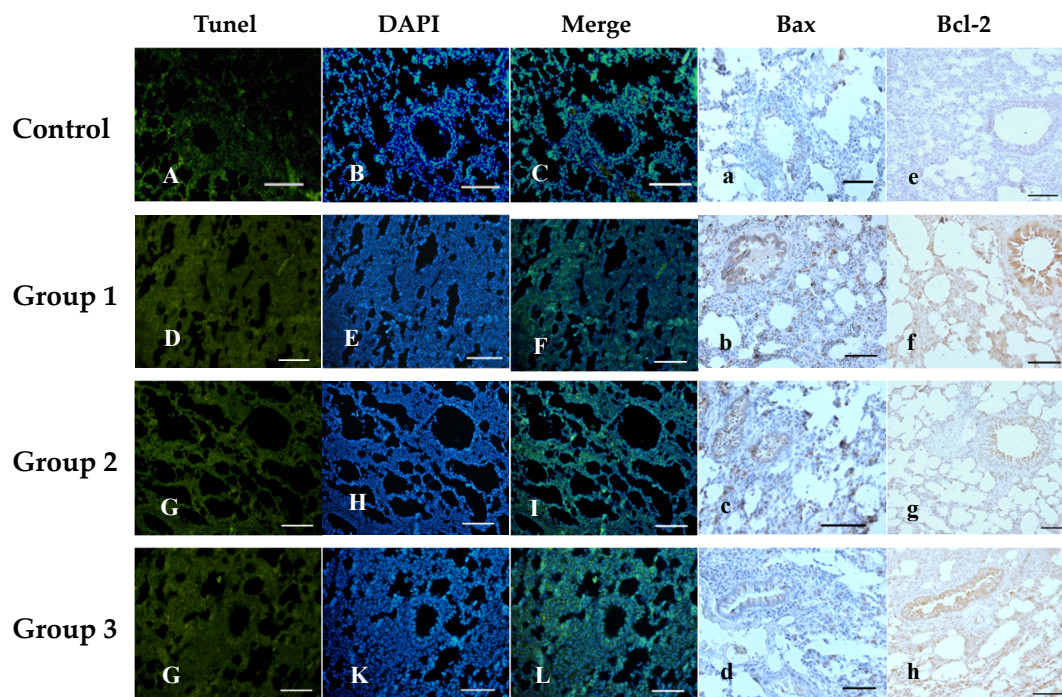
**Supplemental Figure S1.** The breeding materials. (A) *Nicotiana tabacum* L., (B) *Perilla frutescens* var. *Frutescens* and (C) *Ocimum basilicum* L.



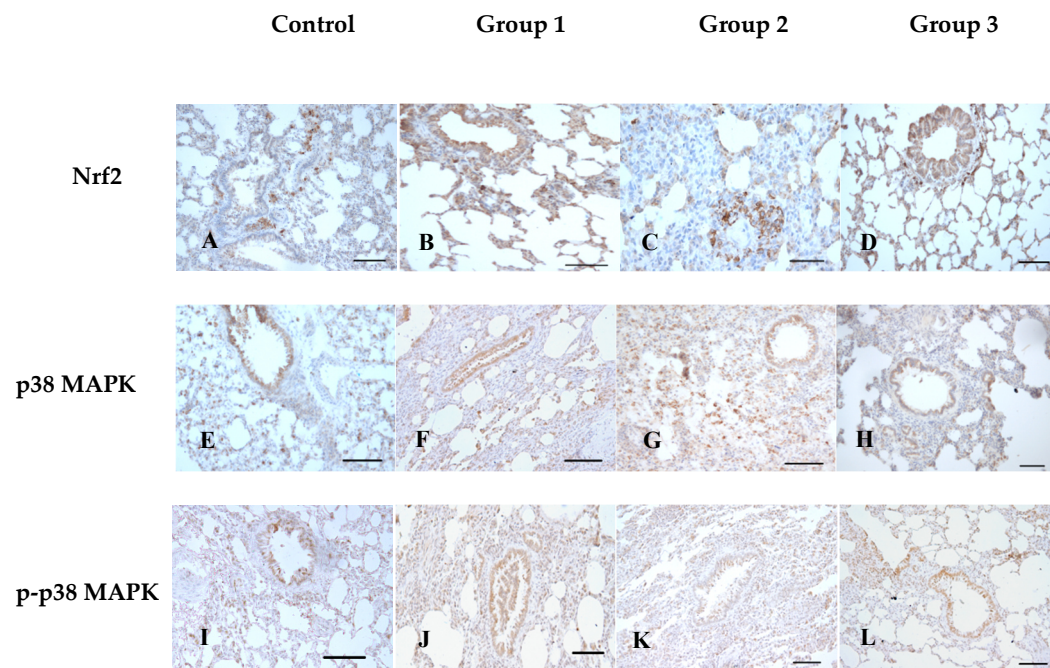
**Supplemental Figure S2.** Body weight changes in CS groups and normal groups. The same uppercase letter(s) on the bars indicated significant differences between groups at 30 days or 60 days, respectively ( $P < 0.05$ ). # indicated significant differences in each group at 60 days compared to the initial body weight ( $P < 0.05$ ).



**Supplemental Figure S3.** Pathological changes in lung tissues of CS-exposed rats at 30 days. Representative images of H&E (A-D), PAS (E-H), Masson's (I-L) and DCFH-DA (M-P) staining.



**Supplemental Figure S4.** Apoptosis in lung tissues of CS-exposed rats at 30 days. Apoptosis of lung tissue was evaluated by TUNEL assay (A-L). Representative images of immunohistochemical staining of Bax (a-d) and Bcl-2 (e-h) protein.



**Supplemental Figure S5.** Cigarette smoke altered Nrf2 and p38 MAPK expression in lung tissues of rats at 30 days. Representative images of immunohistochemical staining of Nrf2 (A-D), p38 MAPK (E-H) and phospho-p38MAPK (I-L).