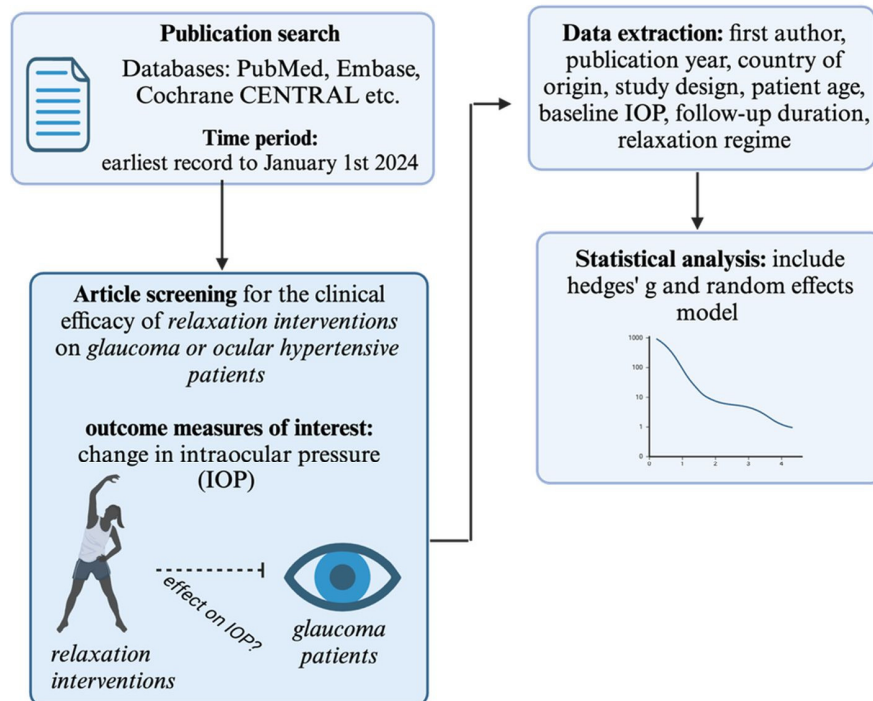
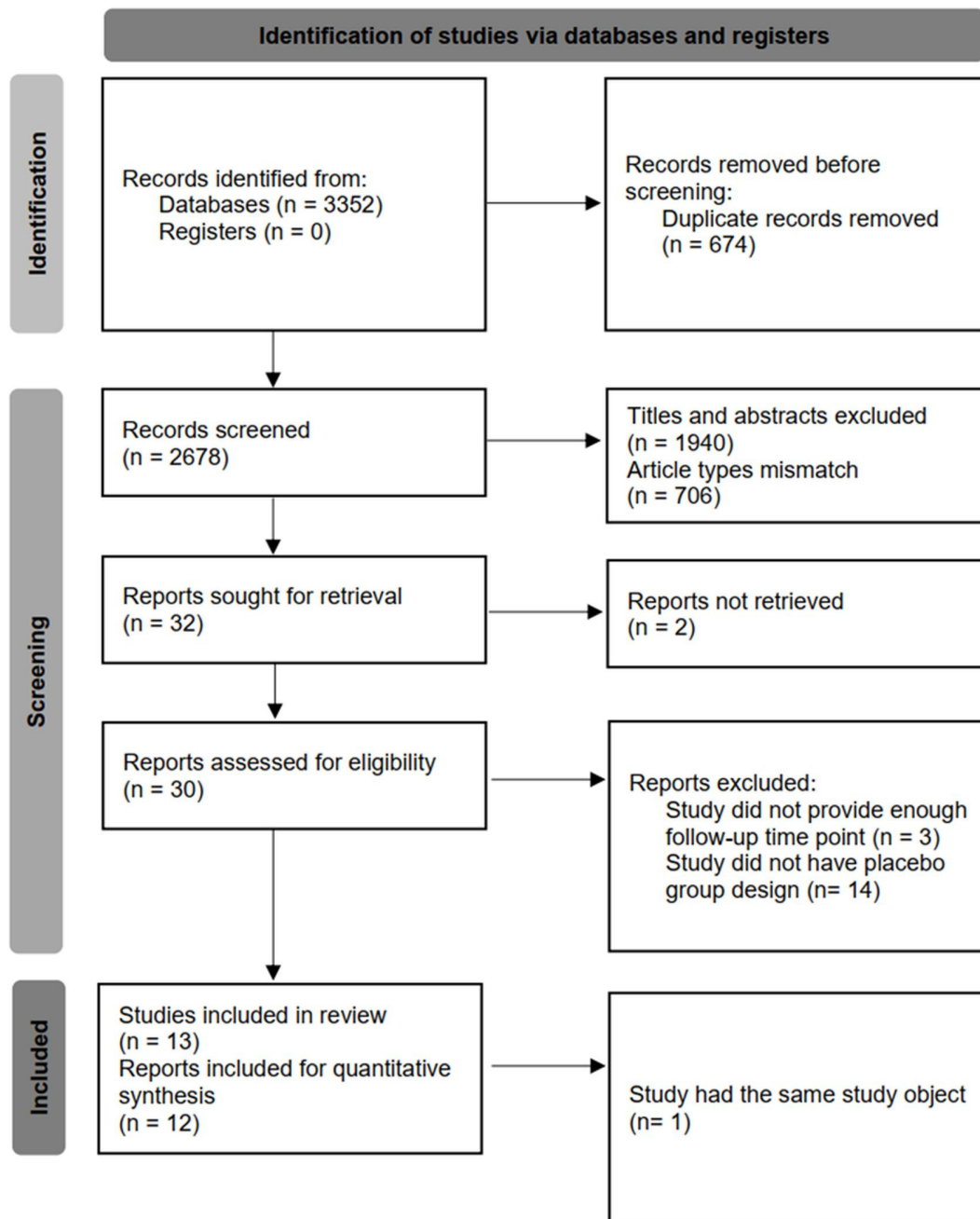


**Supplementary Figure S1.** Proposed pathophysiology between mental health conditions and glaucoma.



**Supplementary Figure S2.** Overview of study design.



**Supplementary Figure S3.** PRISMA flow diagram literature search and study selection.

		Risk of bias domains					
		D1	D2	D3	D4	D5	Overall
Study	Kaluza 1995	<div>-</div>	<div>-</div>	<div>+</div>	<div>+</div>	<div>+</div>	<div>X</div>
	Kaluza 1996	<div>-</div>	<div>-</div>	<div>+</div>	<div>+</div>	<div>+</div>	<div>X</div>
	Dada 2018	<div>+</div>	<div>+</div>	<div>+</div>	<div>+</div>	<div>+</div>	<div>+</div>
	Gagrani 2018	<div>+</div>	<div>+</div>	<div>+</div>	<div>+</div>	<div>+</div>	<div>+</div>
	Gupta 2019	<div>-</div>	<div>+</div>	<div>+</div>	<div>+</div>	<div>+</div>	<div>-</div>
	Dada 2021a	<div>+</div>	<div>+</div>	<div>+</div>	<div>+</div>	<div>+</div>	<div>+</div>
	Dada 2021b	<div>+</div>	<div>+</div>	<div>+</div>	<div>+</div>	<div>+</div>	<div>+</div>
	Udenia 2021	<div>+</div>	<div>+</div>	<div>+</div>	<div>+</div>	<div>+</div>	<div>+</div>
	Dada 2022	<div>+</div>	<div>-</div>	<div>+</div>	<div>+</div>	<div>+</div>	<div>-</div>
	Ismail 2022	<div>+</div>	<div>+</div>	<div>+</div>	<div>+</div>	<div>+</div>	<div>+</div>
	Sankalp 2022	<div>+</div>	<div>-</div>	<div>+</div>	<div>+</div>	<div>+</div>	<div>-</div>
	Ismail 2023	<div>+</div>	<div>+</div>	<div>+</div>	<div>+</div>	<div>+</div>	<div>+</div>
	Dada 2024	<div>+</div>	<div>+</div>	<div>+</div>	<div>+</div>	<div>+</div>	<div>+</div>

Domains:

D1: Bias arising from the randomization process.

D2: Bias due to deviations from intended intervention.

D3: Bias due to missing outcome data.

D4: Bias in measurement of the outcome.

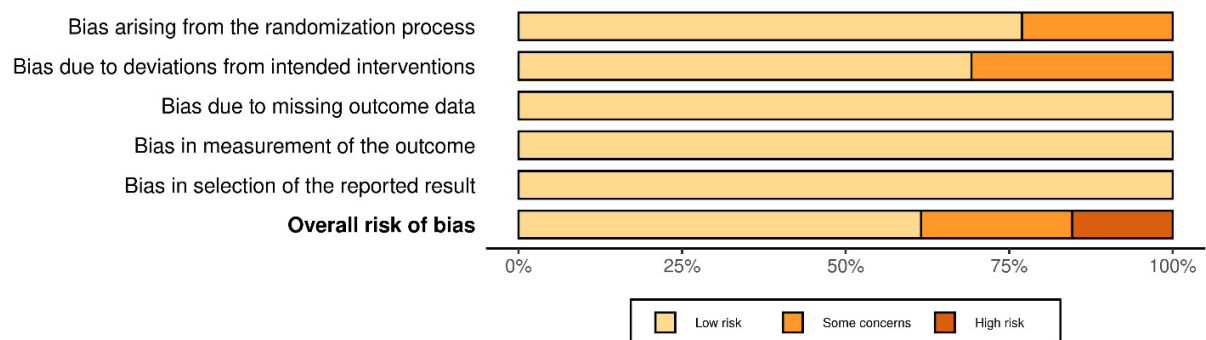
D5: Bias in selection of the reported result.

Judgement

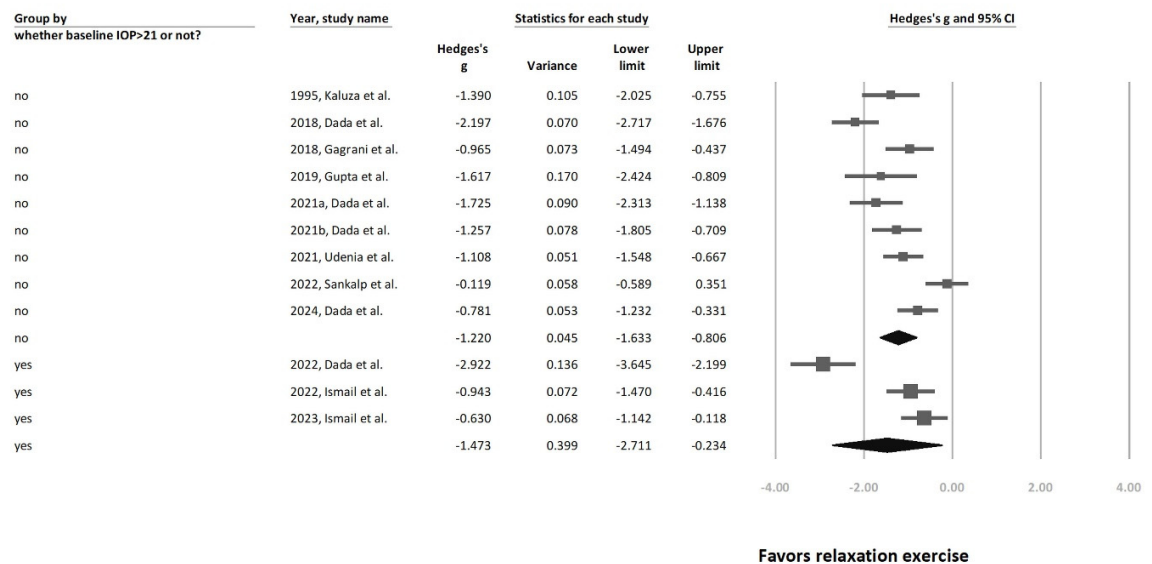
X High

- Some concerns

+ Low

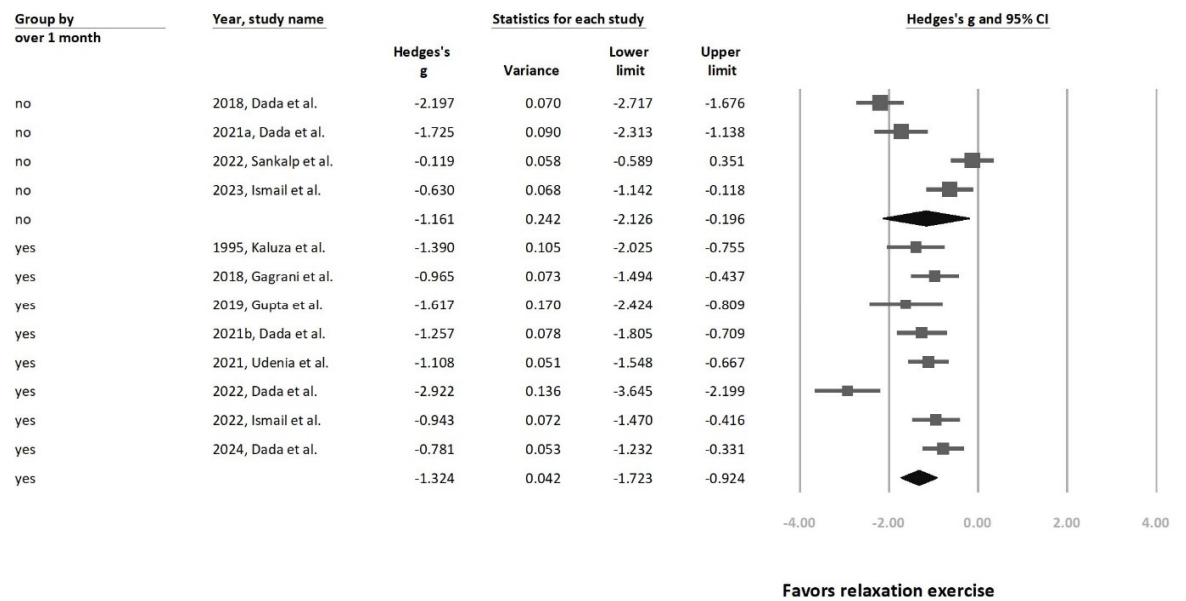


**Supplementary Figure S4.** Risk of bias summary for each study based on the Cochrane bias assessment tool.

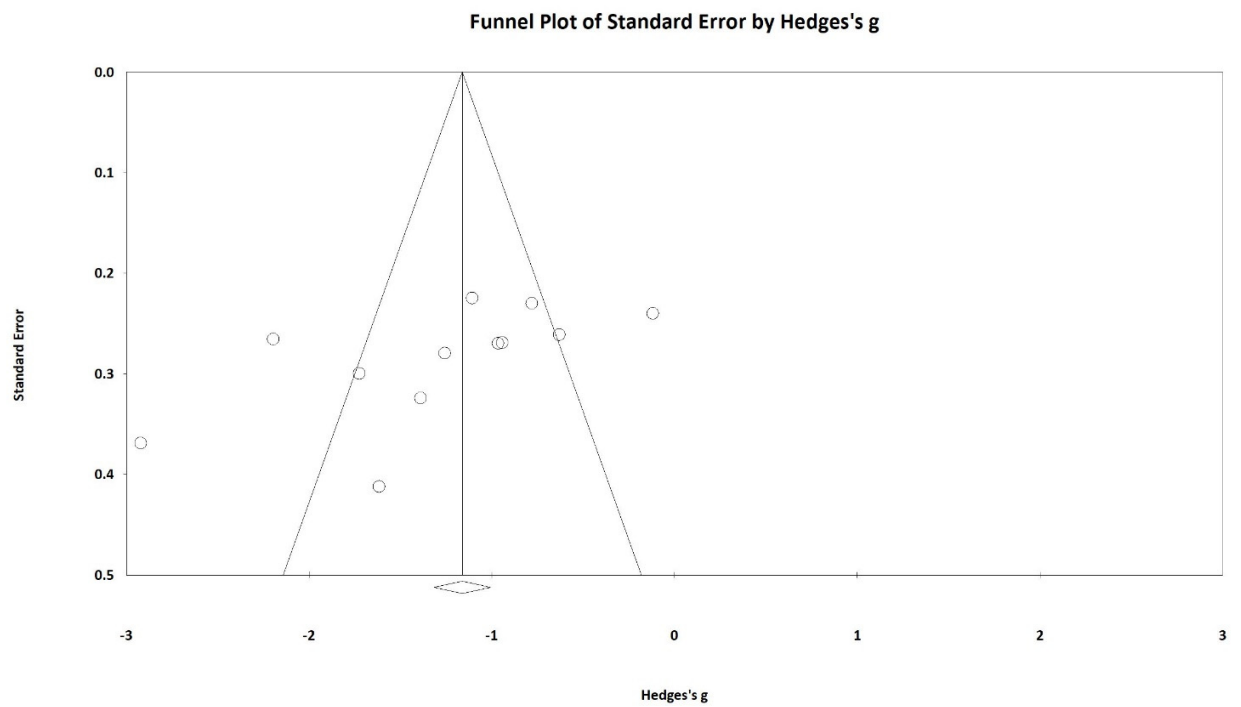


**Supplementary Figure S5.** Forest plot presenting subgroup analysis based on the baseline IOPs.

The baseline IOPs were divided into over or less than 21 mmHg.



**Supplementary Figure S6.** Forest plot presenting subgroup analysis based on the follow-up time points. The follow-up time points were divided into over or less than one-month interval.



**Supplementary Figure S7.** Funnel plot of included studies based on Hedges' g before and after relaxation exercise.