

Figure S1. Representative LC-MS chromatogram of *M. pulegium* leaf extract I (MPLE I). Peak numbers refer to compounds listed in Table 3.

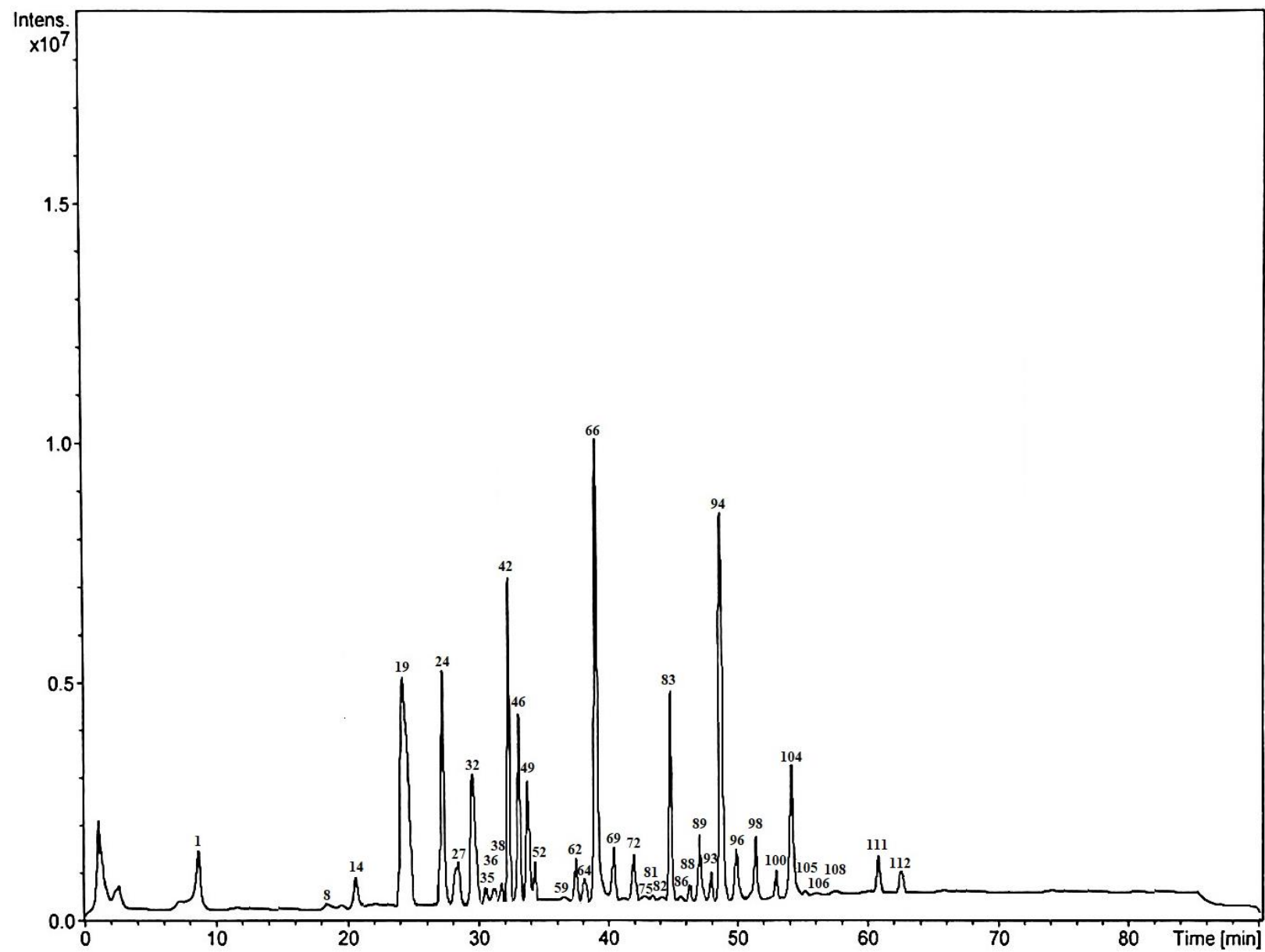


Figure S2. Representative LC-MS chromatogram of *M. pulegium* leaf extract II (MPLE II). Peak numbers refer to compounds listed in Table 3.

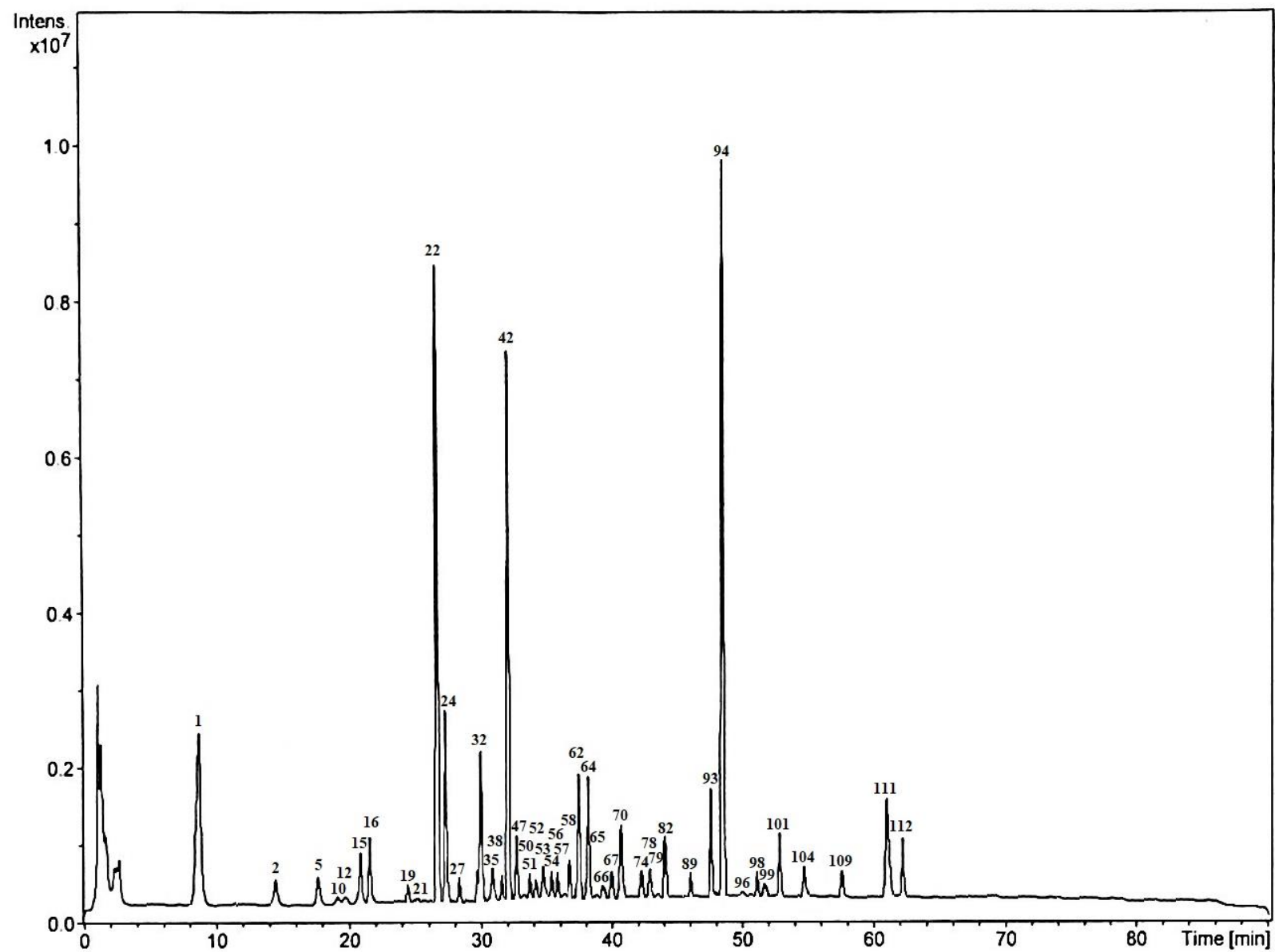


Figure S3. Representative LC-MS chromatogram of *M. pulegium* leaf extract III (MPLE III). Peak numbers refer to compounds listed in Table 3.

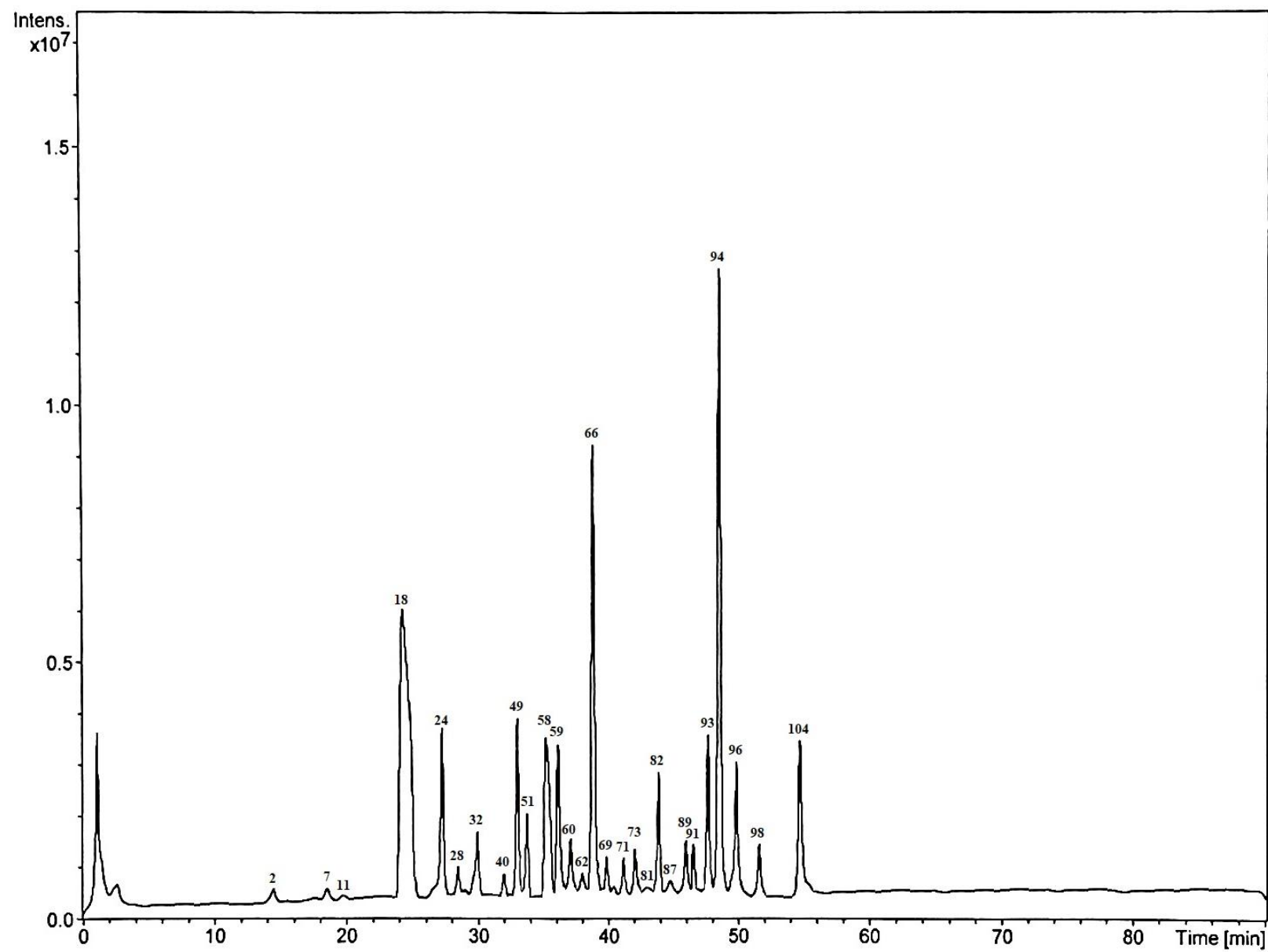


Figure S4. Representative LC-MS chromatogram of *M. pulegium* flower extract I (MPFE I). Peak numbers refer to compounds listed in Table 3.

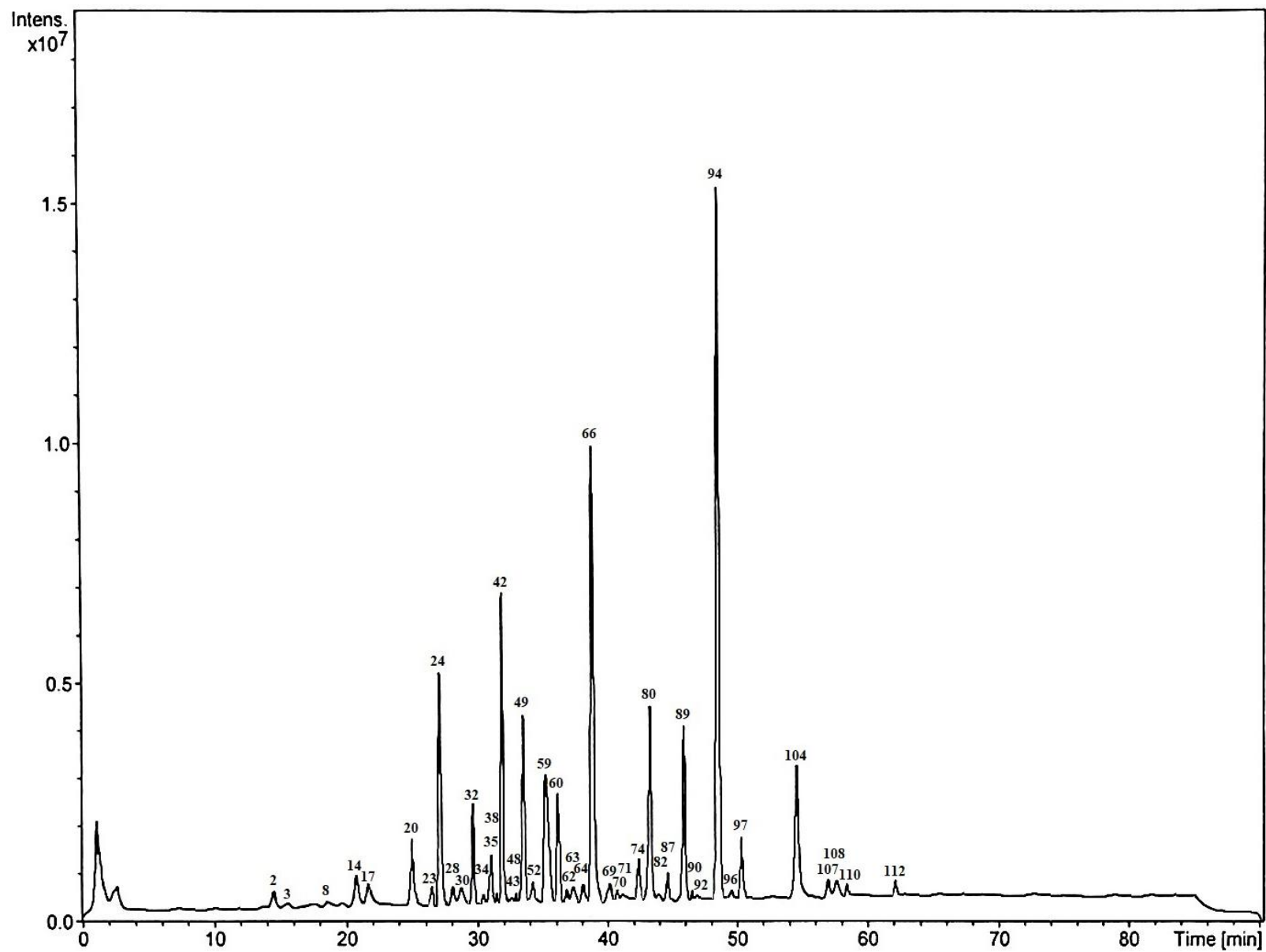


Figure S5. Representative LC-MS chromatogram of *M. pulegium* flower extract II (MPFE II). Peak numbers refer to compounds listed in Table 3.

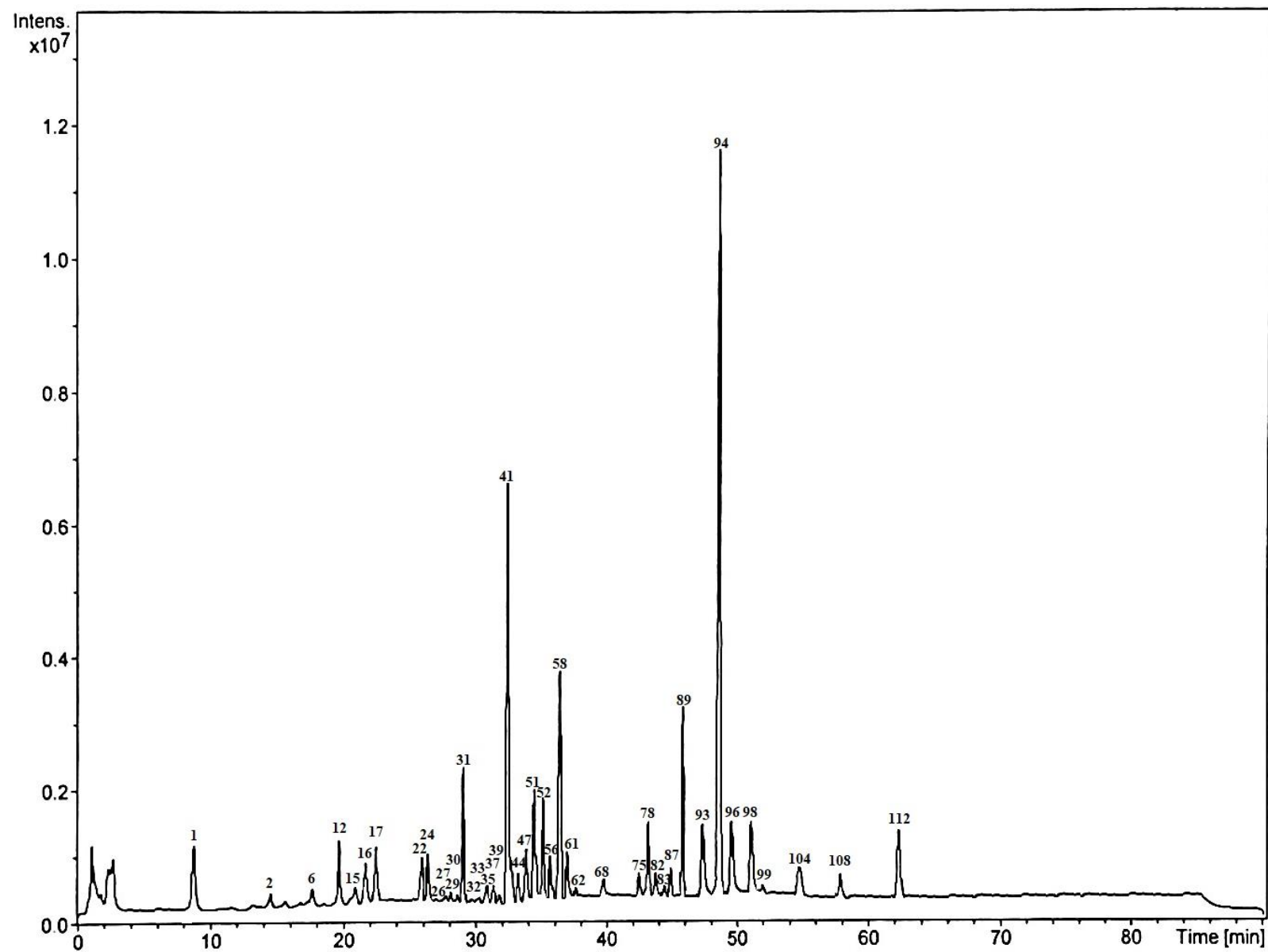


Figure S6. Representative LC-MS chromatogram of *M. pulegium* flower extract III (MPFE III). Peak numbers refer to compounds listed in Table 3.