

Supplementary Data

Anticholinesterase activity of methanolic extract of *Amorpha fruticosa* flowers and isolation of rotenoids and putrescine and spermidine derivatives

Dagmar Jankovská^{1,*}, Nikol Jurčová¹, Renata Kubínová¹, Jiří Václavík¹, Emil Švajdlenka¹, Anna Mascellani², Petr Maršík², Kateřina Bouzková³ and Milan Malaník^{1,*}

¹ Department of Natural Drugs, Faculty of Pharmacy, Masaryk University, Palackého třída 1946/1, 61200 Brno, Czech Republic; JURCOVA.NIKOL@seznam.cz; kubinovar@pharm.muni.cz; vaclavikj@pharm.muni.cz; svajdlenkae@pharm.muni.cz

² Department of Food Science, Faculty of Agrobiological Sciences, Food and Natural Resources, Czech University of Life Sciences Prague, Kamýcká 129, 16500 Prague, Czech Republic; mascellani@af.czu.cz; marsik@af.czu.cz

³ Central European Institute of Technology (CEITEC), Masaryk University, Kamenice 5/C04, 62500 Brno, Czech Republic; kamala@mail.muni.cz

* Correspondence: jankovskad@pharm.muni.cz; malanikm@pharm.muni.cz

Table of Contents

Figure S1. Structures of the compounds **1–10** isolated from flowers of *A. fruticosa*.

Figure S2. HPLC-DAD chromatogram of the crude extract at a concentration of 5 mg/mL and typical UV spectrum of phenolamides.

Figure S3. HPLC-DAD chromatogram of the ethyl acetate fraction at a concentration of 5 mg/mL and assignment of the peaks to the corresponding compounds **1–5**.

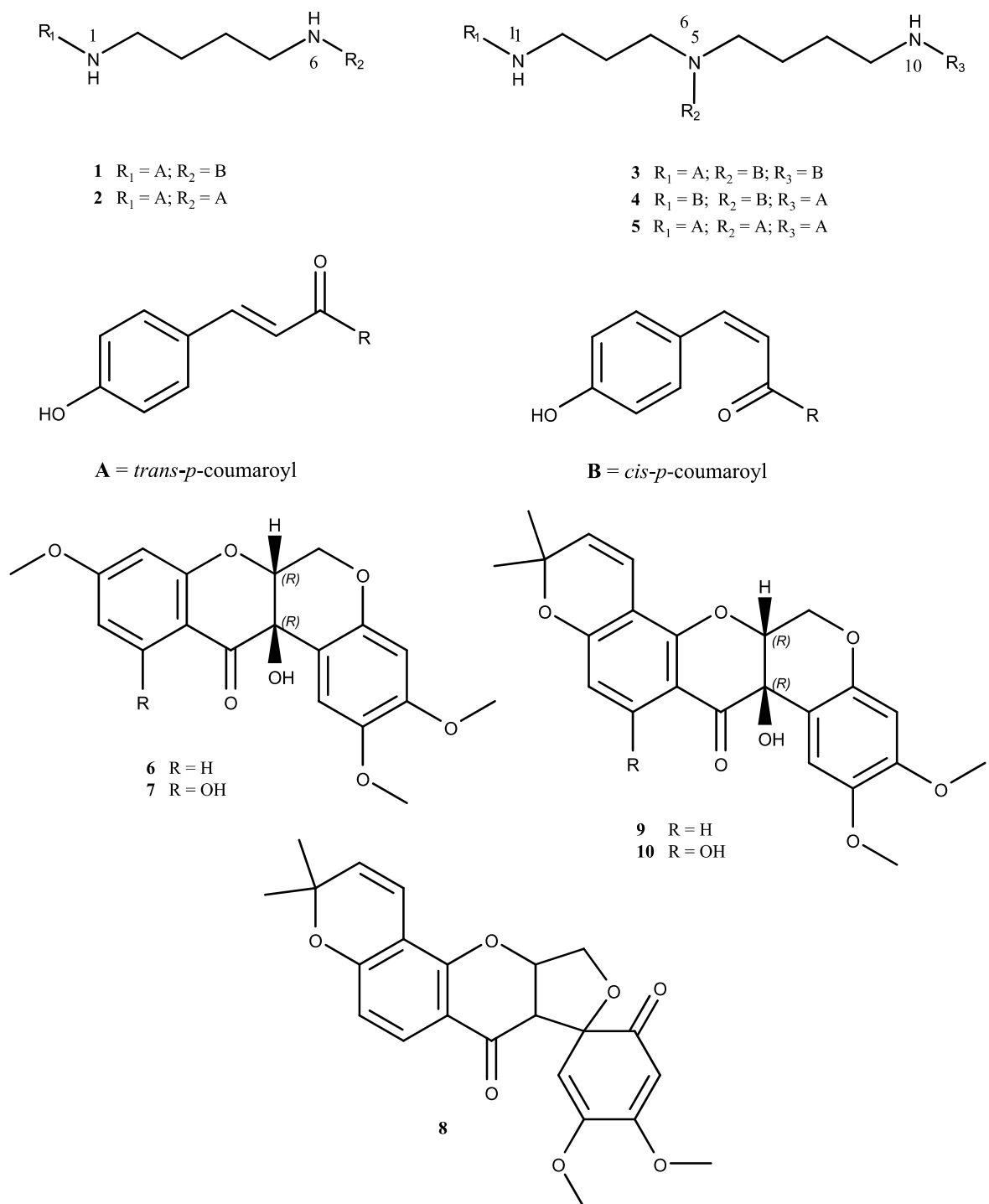


Figure S1. Structures of the compounds **1–10** isolated from flowers of *A. fruticosa*.

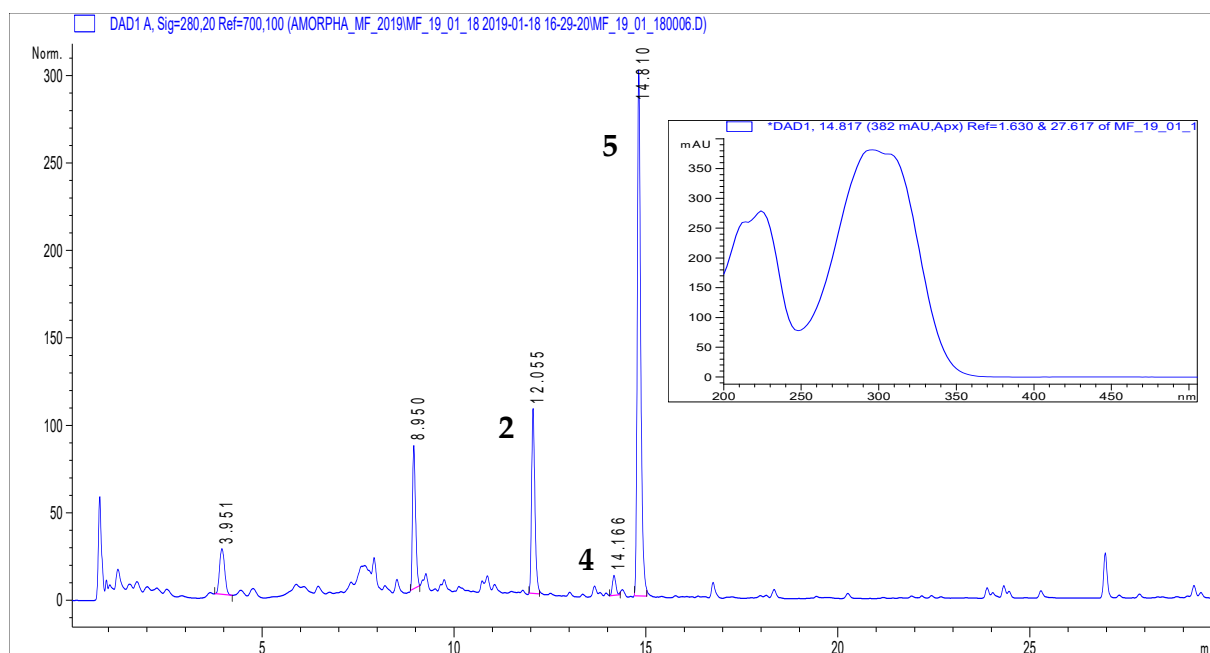


Figure S2. HPLC-DAD chromatogram of the crude extract at a concentration of 5 mg/mL and typical UV spectrum of phenolamides.

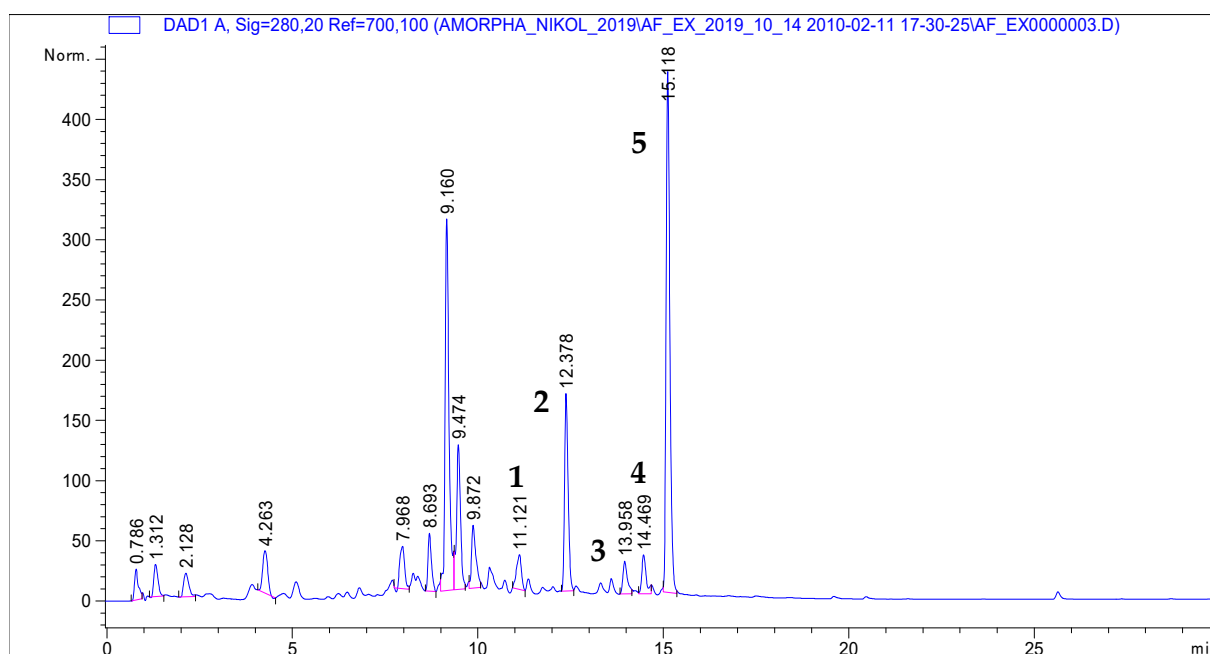


Figure S3. HPLC-DAD chromatogram of the ethyl acetate fraction at a concentration of 5 mg/mL and assignment of the peaks to the corresponding compounds 1–5.