

Supplementary Figures

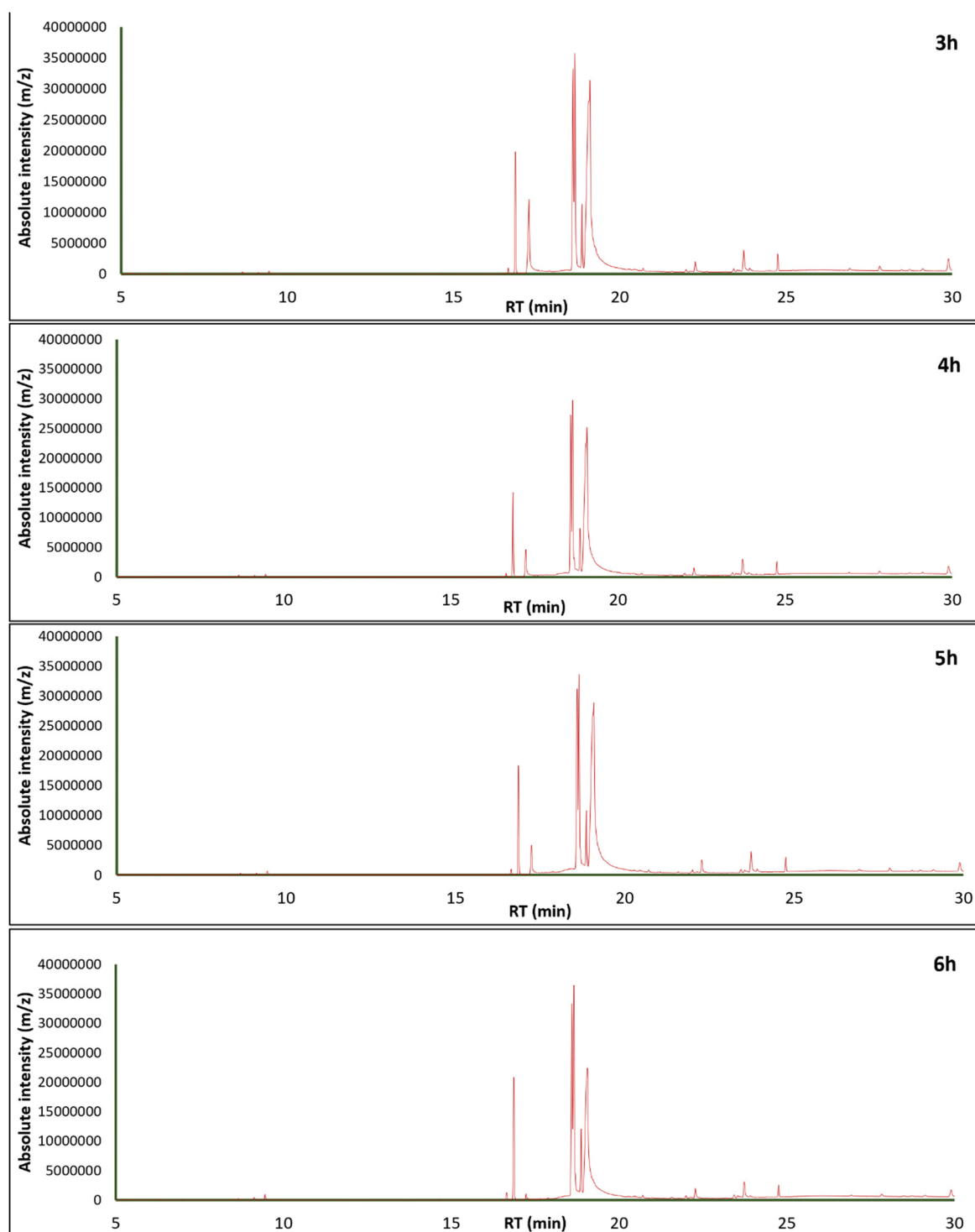


Figure S1. GC-MS spectra of JCME at different reaction times.

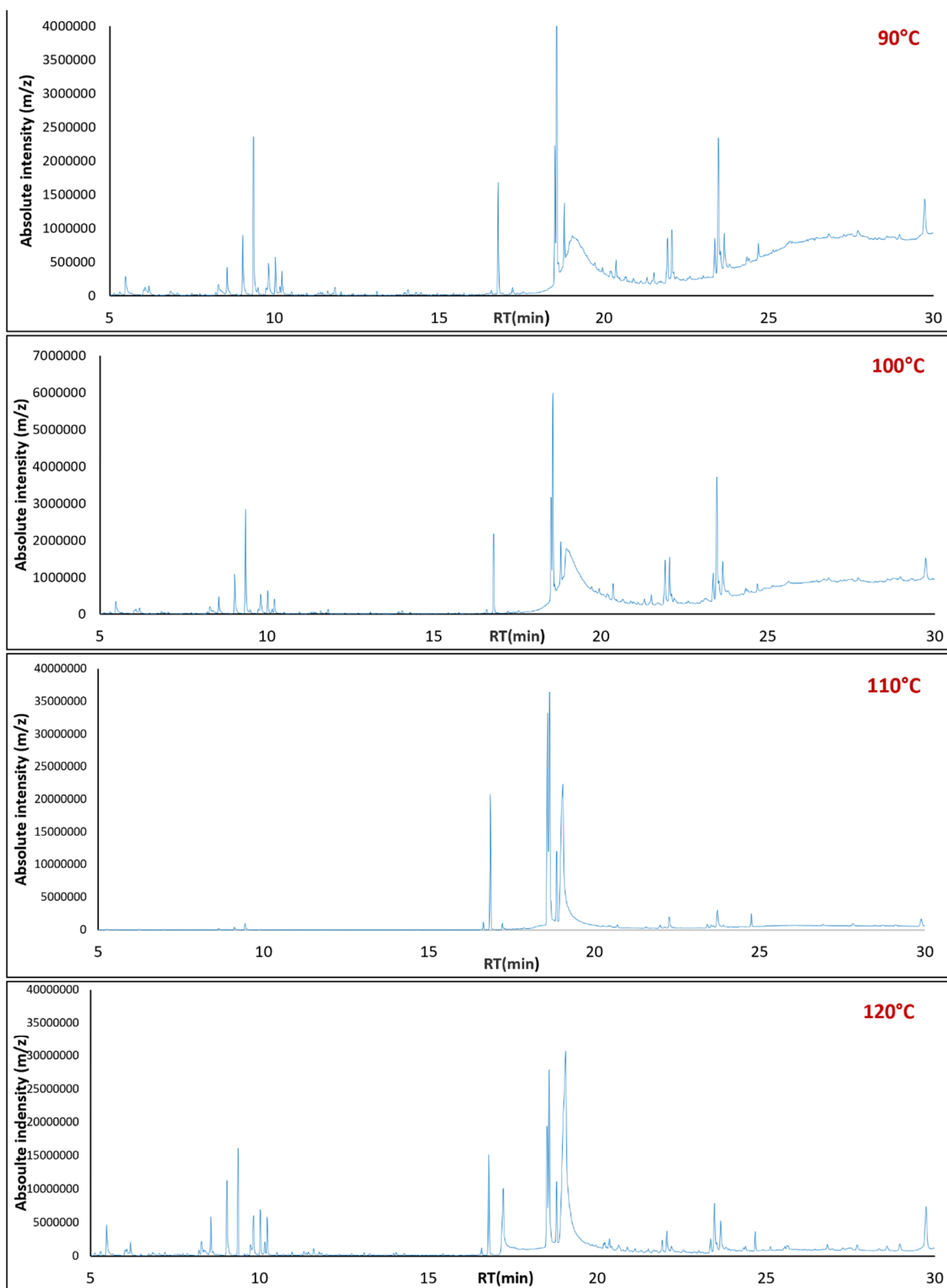


Figure S2. The GC-MS spectra of JCME in different reaction temperatures.

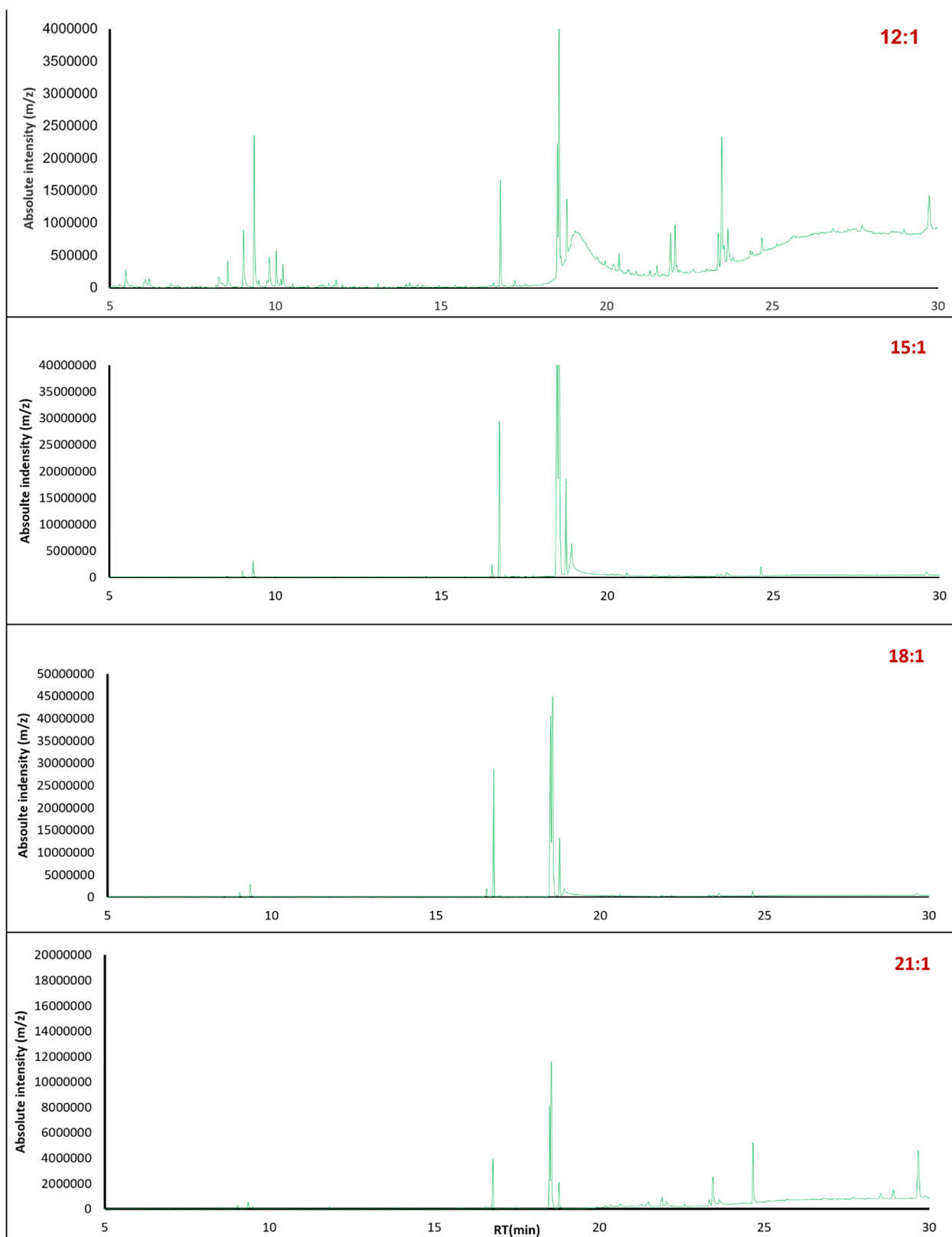


Figure S3. The GC-MS spectra of JCME in different methanol to oil ratio.

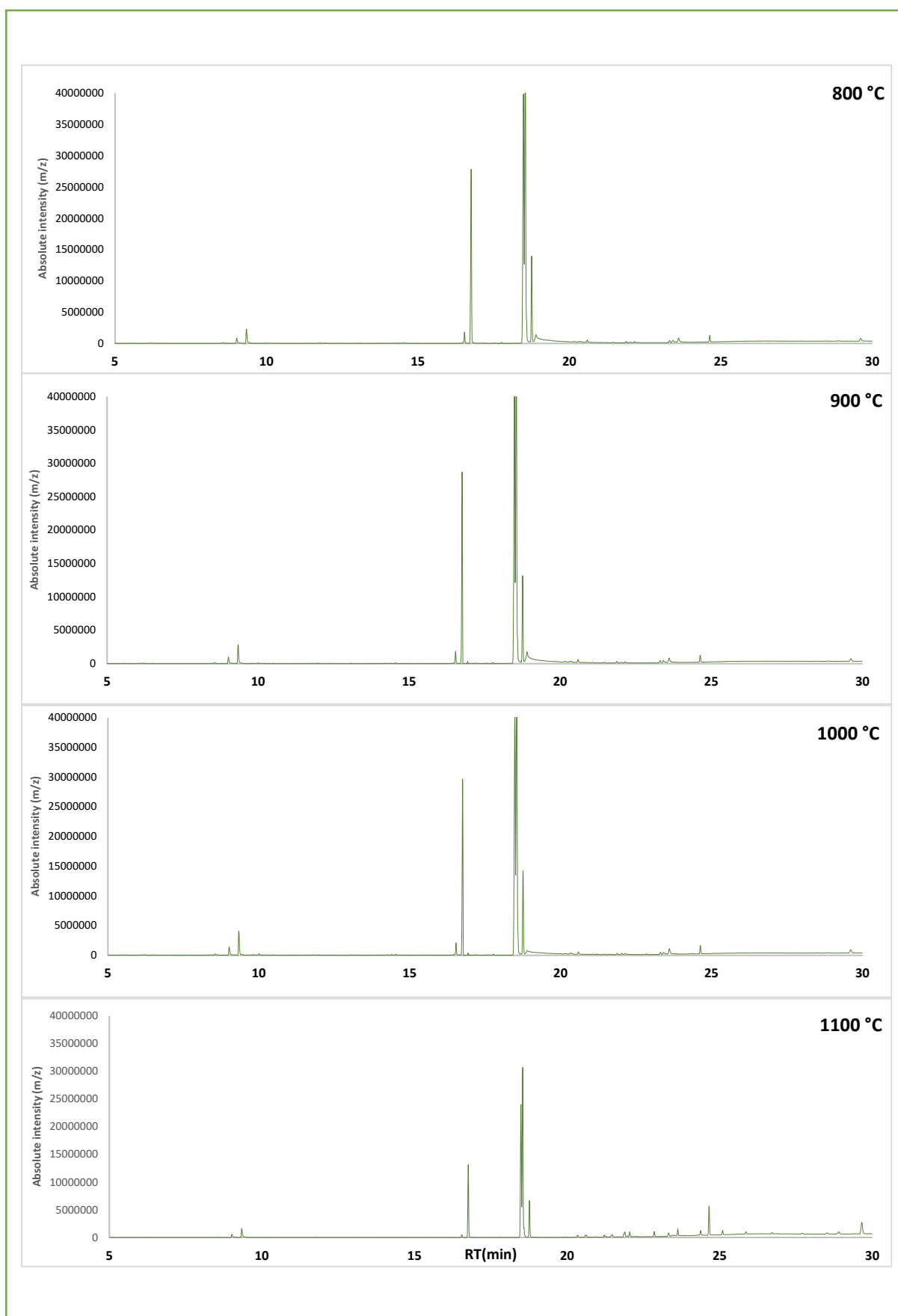


Figure S4. The GC-MS spectra of JCME at different calcined catalyst temperature.

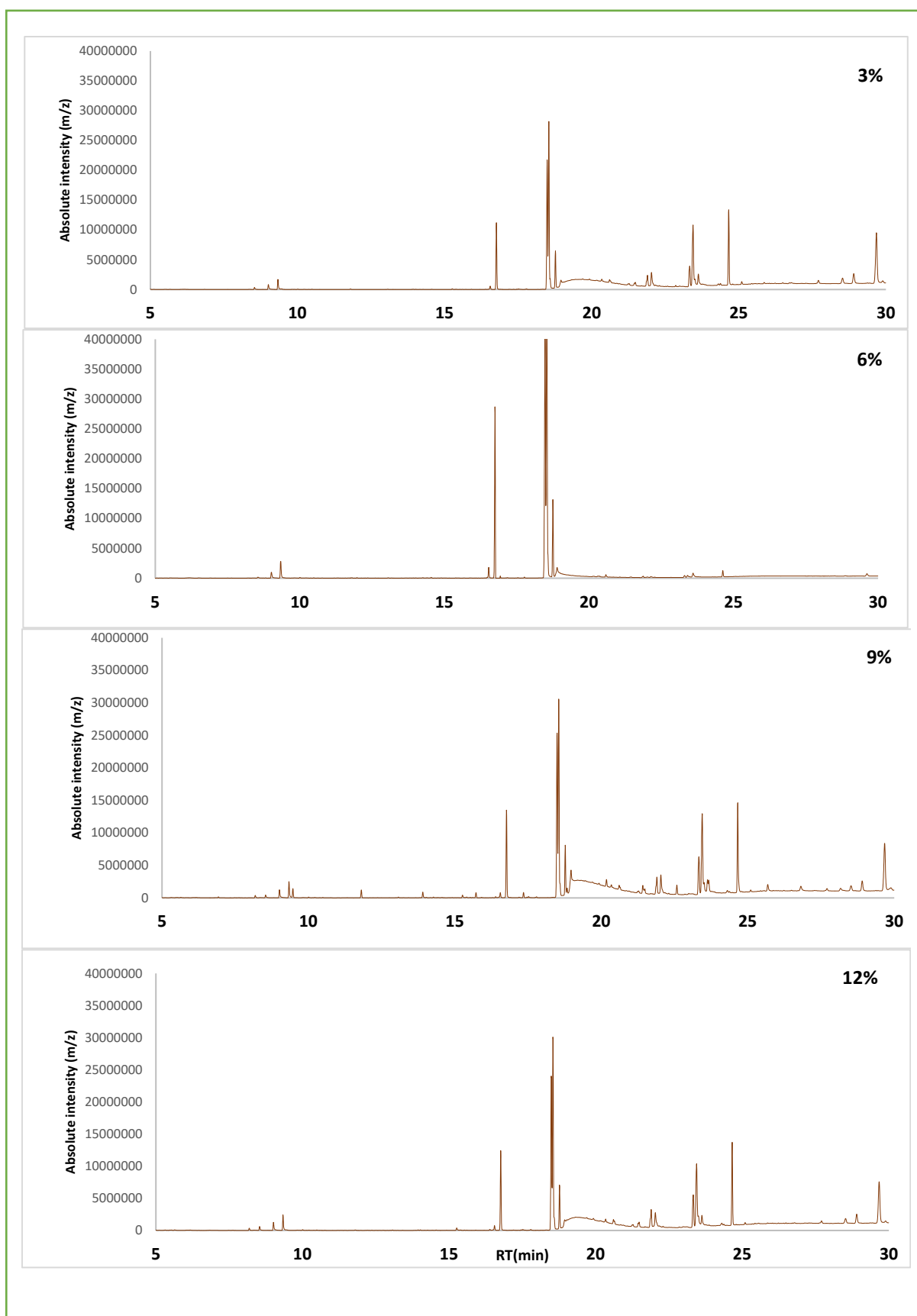


Figure S5. The GC–MS spectra of JCME in different catalyst concentration.

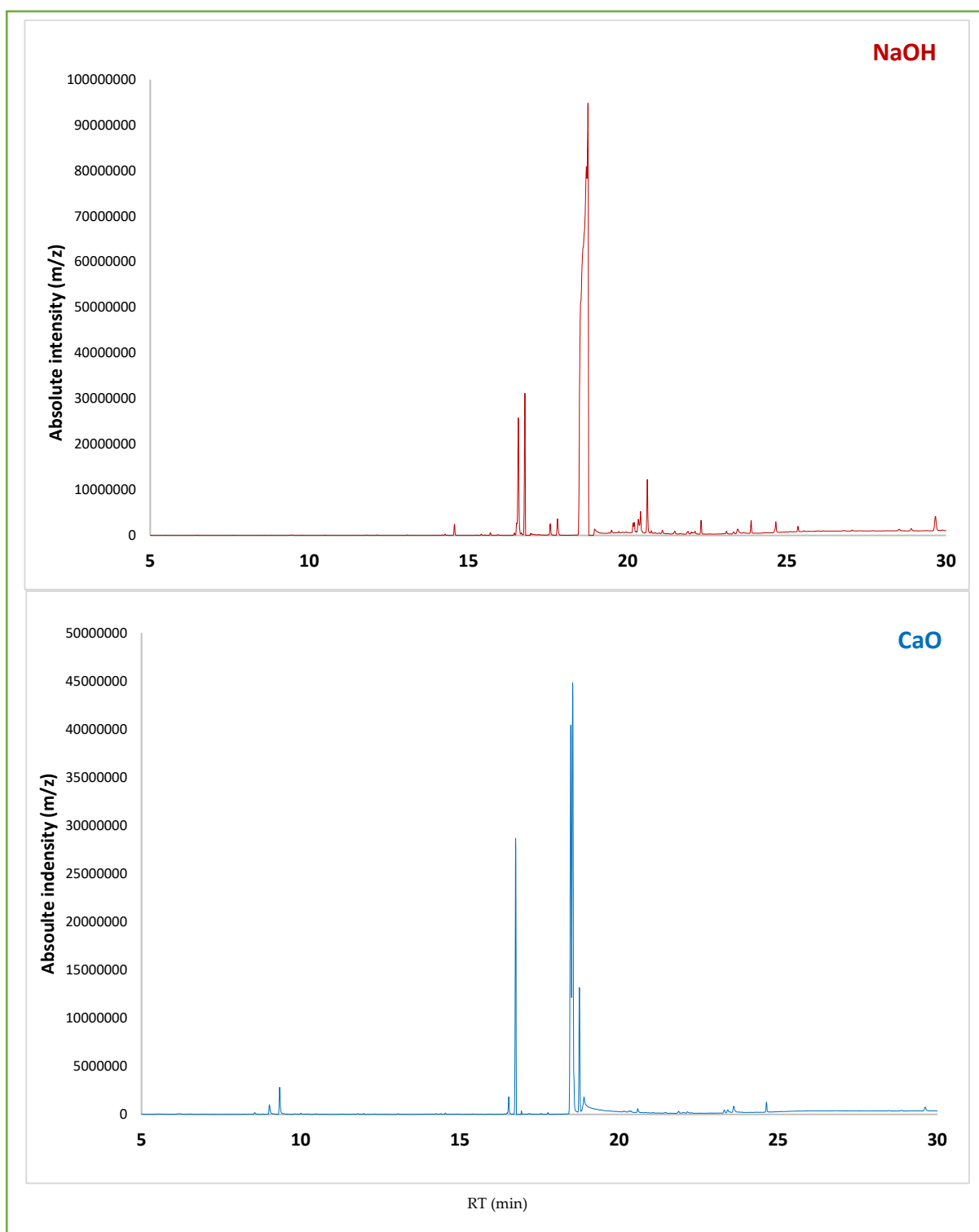


Figure S6. The GC-MS spectra of JCME use catalyst (a) CaO from mussel shell (b) NaOH.