

Table S1. Comparison of model performance indices.

Response	Model	AIC ¹	BIC ²	R squared	Adjusted R squared	RMSE ³	Sigma	Performance score
Extract	FO ⁶	45.923	50.089	0.564	0.463	0.696	0.796	0.00%
	TWI ⁷	39.922	46.588	0.785	0.655	0.489	0.638	27.48%
	PQ ⁸	11.246	20.411	0.972	0.936	0.176	0.275	82.04%
	CM ⁹	10.747	16.579	0.956	0.937	0.220	0.273	97.97%
KI ⁴	FO	94.356	98.522	0.730	0.667	2.255	3.308	0.00000122%
	TWI	91.893	98.559	0.836	0.737	2.255	2.940	19.63%
	PQ	64.836	74.001	0.976	0.946	0.853	1.329	97.50%
	CM	67.011	73.676	0.962	0.939	1.085	1.414	84.93%
AAL ⁵	FO	49.119	53.285	0.065	-0.151	0.765	0.874	0.00%
	TWI	13.014	19.679	0.921	0.874	0.222	0.289	67.41%
	PQ	7.551	16.716	0.960	0.908	0.158	0.247	100.00%
	CM	13.014	19.679	0.921	0.874	0.222	0.289	67.41%
Viscosity	FO	31.257	35.423	0.788	0.739	0.452	0.517	0.000000289%
	TWI	30.213	36.878	0.860	0.776	0.368	0.479	14.02%
	PQ	-10.507	-1.342	0.991	0.979	0.093	0.145	79.75%
	CM	-11.937	-3.605	0.991	0.981	0.095	0.138	99.90%
Viscosity 65 °C	FO	24.538	28.705	0.827	0.787	0.371	0.424	5.49%
	TWI	28.572	35.238	0.846	0.753	0.350	0.457	3.86%
	PQ	7.522	16.687	0.969	0.928	0.158	0.246	75.49%
	CM	5.880	13.379	0.964	0.936	0.169	0.233	98.56%

¹ AIC, Akaike information criterion; ² BIC, Bayesian information criterion; ³ RMSE, Root Mean Square Error; ⁴ KI, Kolbach index; ⁵ AAL, apparent attenuation limit; ⁶ FO, first order; ⁷ TWI, two-way interaction; ⁸ PQ, pure quadratic; ⁹ CM, customized model (excluding some non-significant terms while maintaining hierarchy) The selected models have been reported in bold.

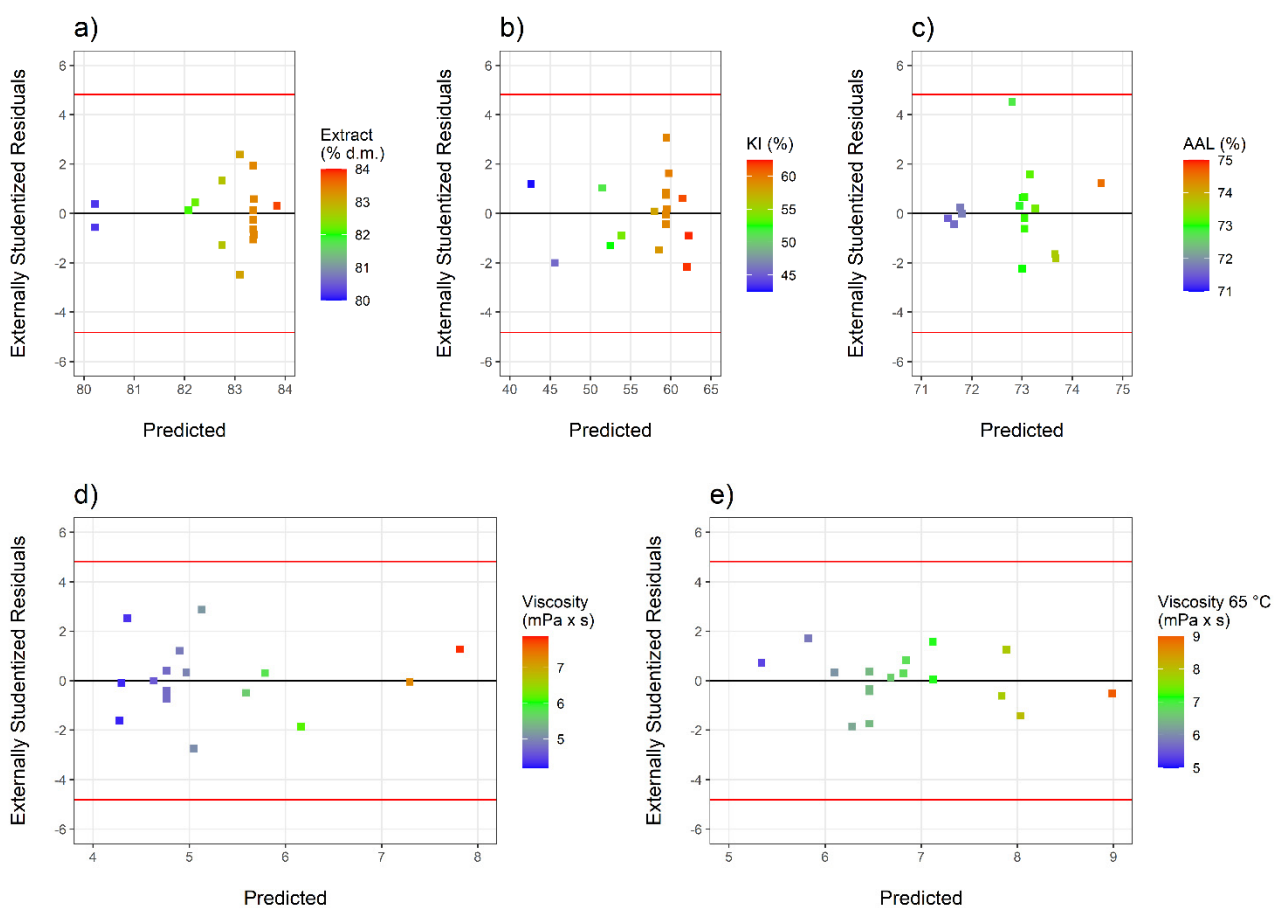


Figure S1. Plot of externally studentized residuals vs predicted responses. Each subplot refers to a specific quality attribute: a) extract; b) KI, Kolbach index; c) AAL, apparent attenuation limit; d) viscosity in the Congress wort; e) viscosity in the isothermal mash.

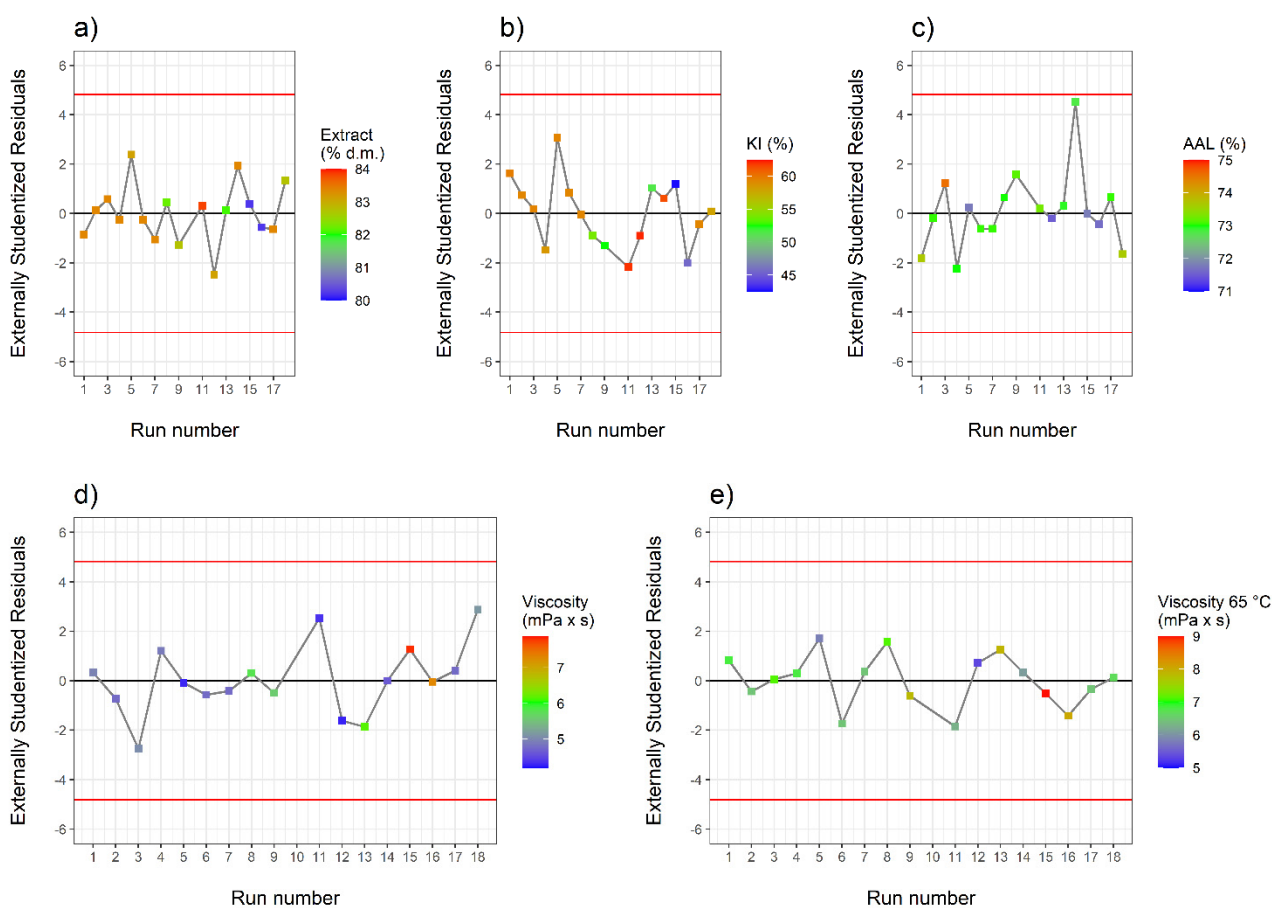


Figure S2. Plot of externally studentized residuals vs run number. Each subplot refers to a specific quality attribute: a) extract; b) KI, Kolbach index; c) AAL, apparent attenuation limit; d) viscosity in the Congress wort; e) viscosity in the isothermal mash.

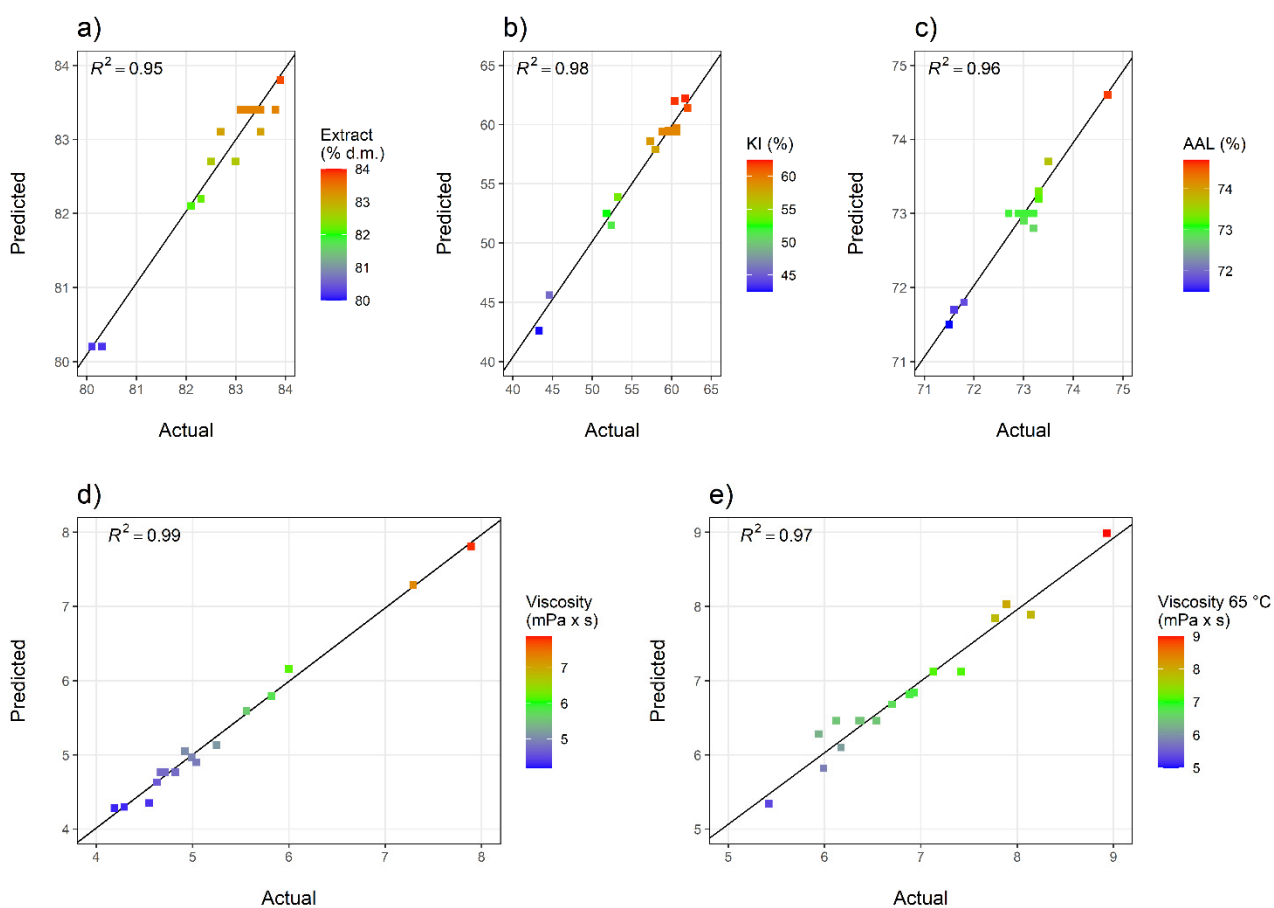


Figure S3. Plot of predicted vs actual responses. Each subplot refers to a specific quality attribute: a) extract; b) KI, Kolbach index; c) AAL, apparent attenuation limit; d) viscosity in the Congress wort; e) viscosity in the isothermal mash.