

Supplementary Material

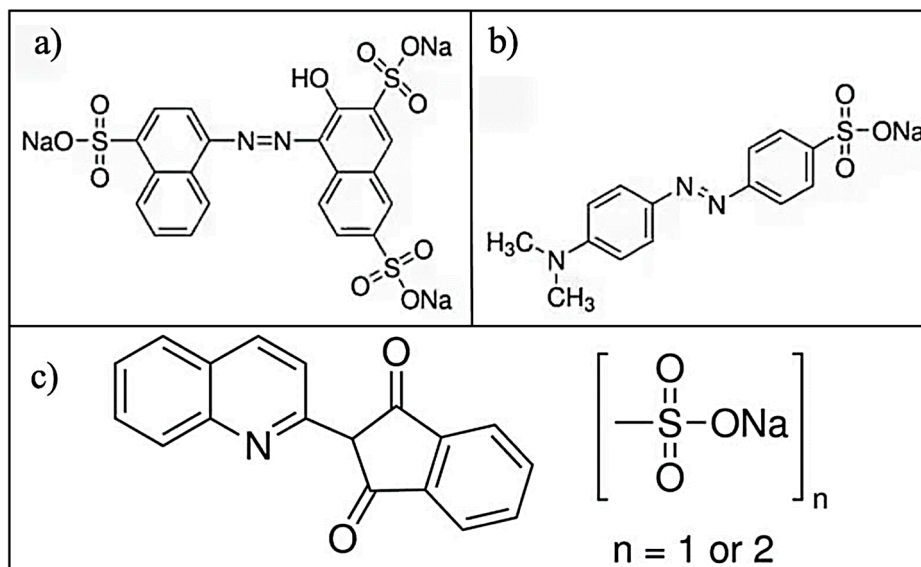


Figure S1. Skeletal structures of (a) Amaranth, (b) Methyl Orange, and (c) Quinoline Yellow, all anionic dyes.

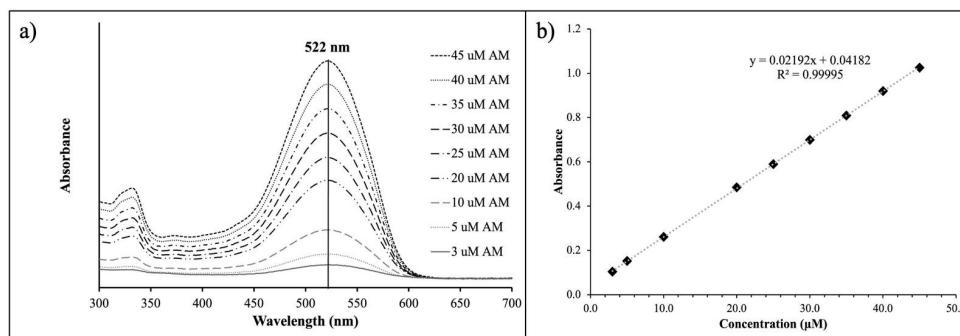


Figure S2. (a) UV-Vis spectra and (b) calibration curve of Amaranth.

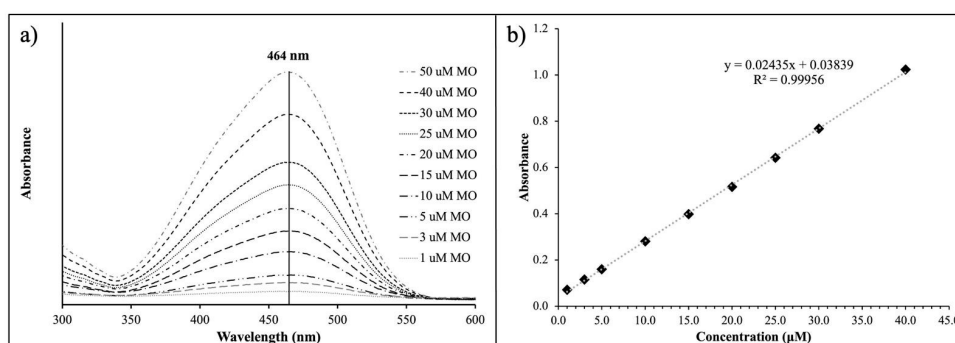


Figure S3. (a) UV-Vis spectra and (b) calibration curve of Methyl Orange.

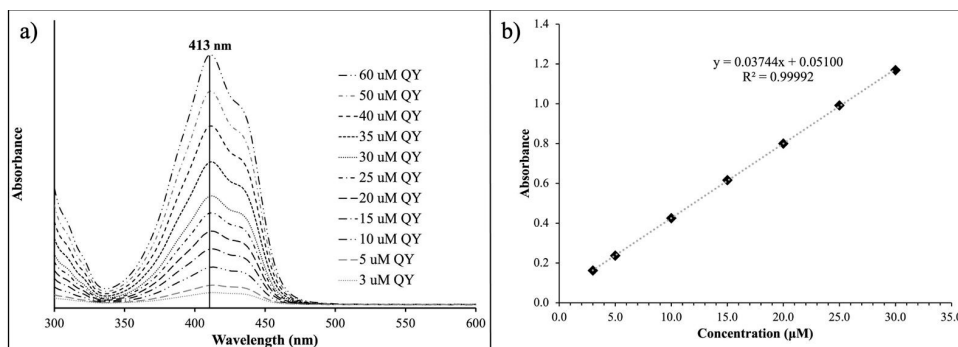


Figure S4. (a) UV-Vis spectra and (b) calibration curve of Quinoline Yellow.