

Figure S1. Daily anomalies of (a) PM_{2.5}, (b) O₃, (c) NO₂ concentrations and (d) AQHI for and AQHI between MS1 (city center station) and MS3 (urban station) as well as MS2 (port station) and MS3 (urban station), respectively. Red/ blue points show the statistically significant/ insignificant differences at 95%.

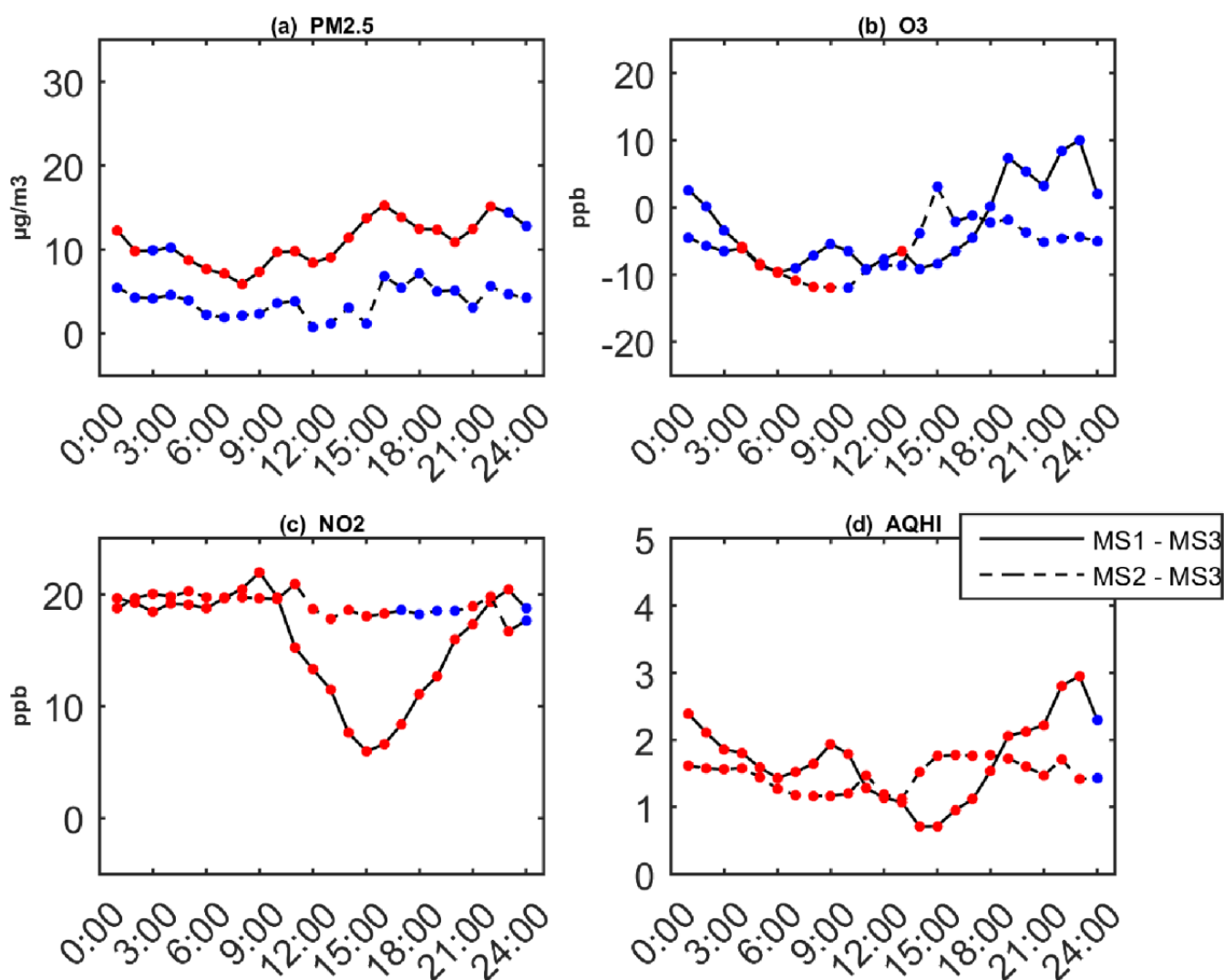


Figure S2: Diurnal anomalies of (a) PM_{2.5}, (b) O₃, (c) NO₂ concentrations and (d) AQHI between MS1 (city center station) and MS3 (urban station) as well as MS1 (city center station) and MS2 (port station), respectively. Red/ blue point show the statistically significant/ insignificant differences at 95%.

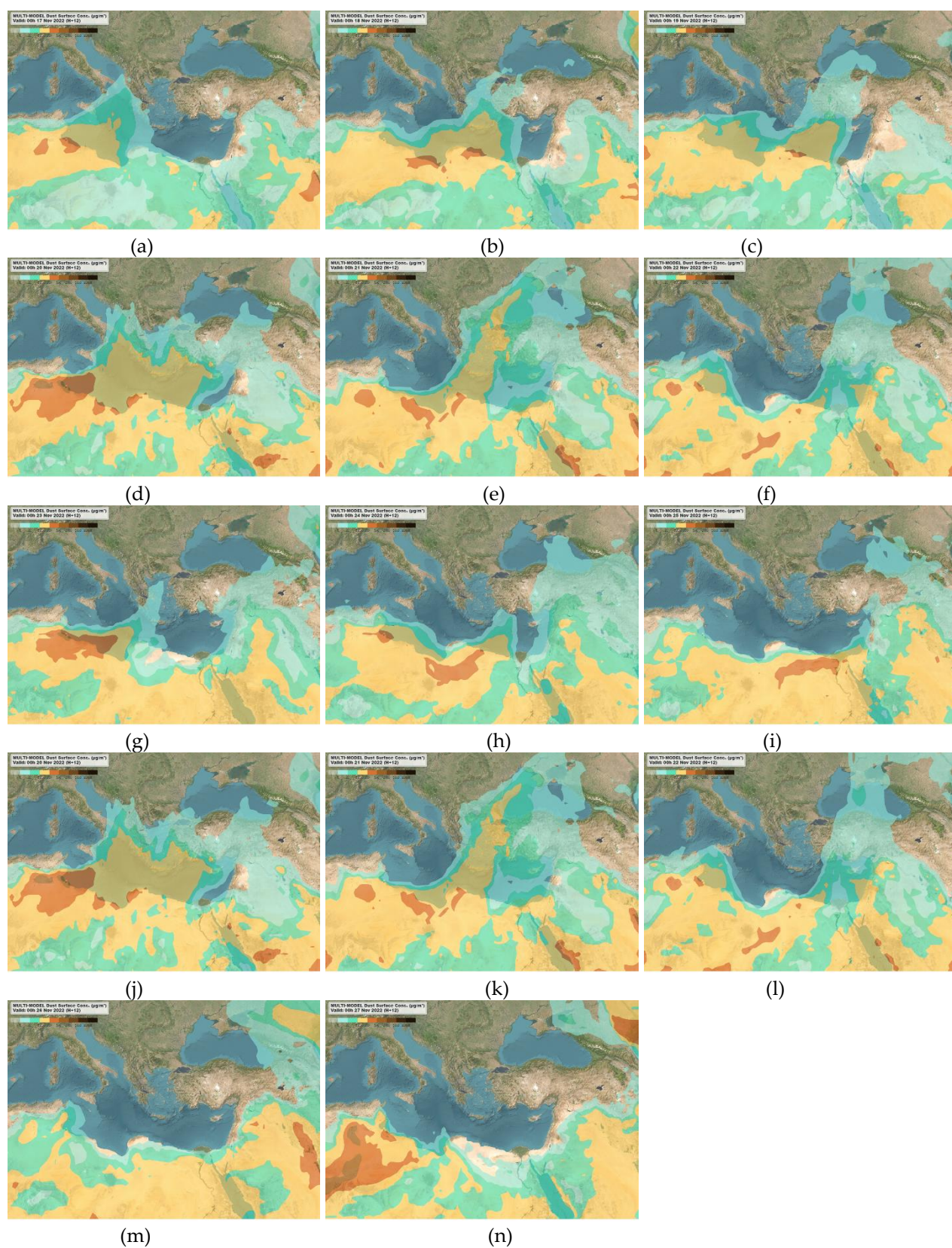


Figure S3. Images at 00:00 of the multi-model mean dust surface concentration ($\mu\text{g}/\text{m}^3$) during the period from (a) – (n): 17th to 27th November 2022. Images were provided by the WMO Barcelona Dust Regional Center. (Source: <https://dust.aemet.es/products/daily-dust-products>, assessed date: 8 March 2022).